



Washington State
**DEPARTMENT OF
ENTERPRISE SERVICES**

STATE CAPITOL COMMITTEE

*Lieutenant Governor Denny Heck (2025 Chair), Secretary of State Steve Hobbs (2025 Vice Chair),
Governor Ferguson's Designee Beau Perschbacher, Commissioner of Public Lands Dave Upthegrove's
Designee Katy Taylor*

AND

CAPITOL CAMPUS DESIGN ADVISORY COMMITTEE

*Jordan Kiel (2025 Chair, Architect-2), Kristin Glandon (2025 Vice Chair, Landscape Architect),
Secretary of State Steve Hobbs, Senator Phil Fortunato, Representative Beth Doglio, Representative Joel McEntire,
Alex Rolluda (Architect-1), Marc Daily (Urban Planner)*

JOINT SCC-CCDAC MEETING FEBRUARY 27, 2025

REMOTE ACCESS MEETING

PLEASE ACCESS THE MEETING VIA THE FOLLOWING LINK:

[HTTPS://DES-WA.ZOOM.US/J/95521738646?PWD=BAPH7NNZYBI9E8V6TQRDzNLGODtJNZ.1](https://des-wa.zoom.us/j/95521738646?pwd=BAPH7NNZYBI9E8V6TQRDzNLGODtJNZ.1)

Webinar ID: 955 2173 8646

Passcode: 204508

**State Capitol Committee & Capitol Campus Design Advisory Committee
Agenda, February 27, 2025**

Time	Agenda Items	Presenter	Desired Outcome
3:30	1- Call Meeting to Order, General Announcements, and Approval of the Agenda	Lt. Governor Heck (SCC Chair)	
3:35	2- Approval of SCC Dec. 16, 2024 Meeting Minutes	Lt. Governor Heck (SCC Chair)	<u>Decisional</u> - Review and approval by SCC.
3:40	3- Approval of CCDAC Nov. 14, 2024 Meeting Minutes	Jordan Kiel (CCDAC Chair)	<u>Decisional</u> - Review and approval by CCDAC.
3:45	4- Public Comment Period	Kayla Quinn, Dept. of Enterprise Services	<u>Informational</u> - DES will summarize any public comments received.
4:05	5- Joel Pritchard State Library Renaming	Linda Kent, Dept. of Enterprise Services	<u>Decisional</u> - <ul style="list-style-type: none"> • CCDAC will make a formal recommendation to the SCC. • SCC will make a recommendation to the Legislature.
4:20	6- Campus Memorials Cal Anderson Memorial	Linda Kent, Dept. of Enterprise Services	<u>Decisional</u> - <ul style="list-style-type: none"> • CCDAC will make a formal recommendation to the SCC on the design concept of the Cal Anderson Memorial. • SCC will make a recommendation to the Legislature.
4:35	7- Office of Secretary of State (OSOS) Library Archives Building Proposal	Randy Bolerjack, Office of Secretary of State	<u>Informational</u> - OSOS will provide a briefing regarding the proposal to locate the OSOS Library Archives Building on the General Administration Building site.
4:50	8- Whitman Statue Relocation Update	Linda Kent, Dept. of Enterprise Services	<u>Informational</u> - DES will provide an update about the relocation of the Marcus Whitman Statue.
4:55	9- Legislative Campus Modernization	Wesley Kirkman, Sidney Hunt, Katy Stark, Dept. of Enterprise Services	<u>Informational</u> - DES will provide a status update on the LCM project.
5:00	10- Future Announcements and Adjournment of Meeting	Jordan Kiel (CCDAC Chair)	

Upcoming Committee Meetings Schedule:

Next CCDAC Meeting (2025 Qtr2):
Next SCC Meeting (2025 Qtr2):

Thursday, May 22, 2025; 10 AM
Thursday, June 26, 2025; 10 AM



Washington State
**DEPARTMENT OF
ENTERPRISE SERVICES**

STATE CAPITOL COMMITTEE

*Lieutenant Governor Denny Heck (Chair), Secretary of State Steve Hobbs (2025 Vice Chair),
Governor Ferguson's Designee Beau Perschbacher, Commissioner of Public Lands Dave Uptegrove's
Designee Katy Taylor*

AND

CAPITOL CAMPUS DESIGN ADVISORY COMMITTEE

*Jordan Kiel (2025 Chair, Architect-2), Kristin Glandon (2025 Vice Chair, Landscape Architect),
Secretary of State Steve Hobbs, Senator Phil Fortunato, Representative Beth Doglio, Representative Joel McEntire,
Alex Rolluda (Architect-1), Marc Daily (Urban Planner)*

JOINT SCC-CCDAC MEETING

FEBRUARY 27, 2025

(REMOTE ACCESS MEETING)

2- Approval of Meeting Minutes - SCC

The draft minutes for the
SCC Dec 16, 2024 Meeting
were provided in today's meeting packets.

STATE CAPITOL COMMITTEE
Hybrid/Remote Meeting

Monday, December 16, 2024
10:00 a.m.

Draft Minutes

SCC MEMBERS PRESENT:

Lieutenant Governor Denny Heck, Chair
Randy Bolerjack (Vice Chair & Designee for
Secretary of State Steve Hobbs)
Katy Taylor, (Designee for Commissioner of Public
Lands Hilary Franz)

SCC MEMBERS EXCUSED:

Kelly Wicker, Governor Inslee's Designee

OTHERS PRESENT:

Cynthia Barrett, Department of Enterprise Services	Denise Keegan, Trials Legacy Committee
Rachelle Berrigan, Department of Enterprise Services	Greg Klein, Olympia Historical Society
Emilie Brown, Department of Enterprise Services	Kara Klotz, Department of Enterprise Services
David Bremer, Legislature	Dennis Lawson, WSCFF
George Carter, Department of Enterprise Services	Nouk Leap, Department of Enterprise Services
Brent Chapman, Department of Enterprise Svcs.	Aaron Luoma, HBB
Brian Considine, Department of Natural Resources	Jimmy Martin, Department of Enterprise Services
Brandon Corneliusen, Department of Enterprise Svcs	A.T. Miller
Jerry Cornfield, WA State Standard	Patrick McDonald, Office of the Secretary of State
Ashlee Delaney, Department of Enterprise Services	Brian Pickering, Department of Enterprise Services
Pat Ellis, Puget Sound Fire	Roby Poche, Department of Enterprise Services
Chris Ferguson, Legislature	Dallas Roberts, Lieutenant Governor's Office
Bill Frare, Department of Enterprise Services	Jacquelyn Jimenez Romero
Valerie Gow, Puget Sound Meeting Services	Scott Sarian, Legislature
Greg Griffith, Olympia Historical Society	Bud Sizemore, WA State Council of Fire Fighters
Becky Guyer, Department of Enterprise Services	Katy Stark, Department of Enterprise Services
Tamara Hayes, Department of Enterprise Services	Eileen Swarthout, Legislature
Tom Helpenstell	Shaina Thompson, Department of Enterprise Services
Adam Holdorf, Department of Enterprise Services	James Troyer, Legislature
Ashley Howard, Department of Enterprise Services	Ronald Walters
Rachelle Johnson, Department of Enterprise Services	John Wilson-Tepeli, Legislature
Matt Jones, Department of Enterprise Services	

Call Meeting to Order - Action

Lieutenant Governor Denny Heck called the State Capitol Committee (SCC) hybrid/remote meeting to order at 10:18 a.m. and welcomed members, staff, and guests to the meeting.

Members and staff provided self-introduction.

Lieutenant Governor Heck reviewed items on the agenda to approve the September 19, 2024 meeting minutes; receive public comments; nominate 2025 officers; establish 2025 meeting calendar; consider action on the installation of the Olmsted Plaque and Marathon Trials signs; receive an update on progress of the Cal Anderson Memorial; consider action on the site of the Fallen Firefighters Memorial; and receive updates on the proposed renaming of Joel Pritchard State Library and the Legislative Campus Modernization projects.

Approval of Minutes of September 18, 2024 Meeting – Action

Randy Bolerjack moved, seconded by Katy Taylor, to approve the September 19, 2024 meeting minutes as presented. A voice vote unanimously approved the motion.

SCC Chair and Vice Chair Nominations – Action

Lieutenant Governor Heck invited nominations for Chair and Vice Chair.

Katy Taylor nominated Lieutenant Governor Heck to serve as Chair for 2025 and Steve Hobbs to serve as Vice Chair for 2025. Randy Bolerjack seconded the nominations.

By a unanimous vote of affirmation, Lieutenant Governor Heck was elected to serve as 2025 Chair and Secretary of State Steve Hobbs was elected to serve as 2025 Vice Chair.

Establish SCC 2025 Regular Meeting Calendar – Action

Chair Heck reviewed proposed meeting dates for 2025:

- March 20, 2025 – 10 a.m.
- June 26, 2025 – 10 a.m.
- September 18, 2025 – 10 a.m.
- December 5, 2025 – 10 a.m.

Randy Bolerjack moved, seconded by Katy Taylor, to approve the proposed meeting calendar for 2025 as presented. A voice vote approved the motion unanimously.

Randy Bolerjack moved, seconded by Katy Taylor, to authorize the 2025 SCC Chair (or Vice Chair) to modify the meeting dates or times to fulfill the business needs of the State Capitol Committee and Capitol Campus Design Advisory Committee, and to work with the Department of Enterprise Services to properly notice any modified meeting dates and times. A voice vote approved the motion unanimously.

Public Comment Period – Informational

Jimmy Martin, Legislative Affairs Specialist, reported DES received no written public comments prior to the meeting.

Greg Griffith, Olympia Historical Society, spoke in support of the proposed placement of the Marathon Trials signs at Marathon Park.

Building and Grounds – Action

Olmsted Plaque

Dr. Brent Chapman, Horticulturist and Grounds Property Manager, reviewed the proposed Olmsted Plaque project. Staff presented the proposal as an informational item at the committee's last meeting. The request is to approve the Olmsted Plaque for installation on Capitol Campus.

The bronze plaque formalizes the contribution of the Olmsted firm to west Capitol Campus as recommended by the Campus Arboretum Advisory Committee. The Olmsted Brothers created a tremendous legacy on Capitol Campus. The Advisory Committee recommends including a plaque on the campus to supplement information on the DES webpage about the Olmsted legacy.

The DES Sign Committee approved a new commemorative plaque honoring the Olmsted Brothers' historic landscape design completed in 1929. WAC guidelines specify the regulations for commemorative bronze plaques. The proposal is to install a 12" x 18" plaque on a granite base. Staff collaborated with Friends of Seattle's Olmsted Parks and DES Communications on the text and sign layout. Dr. Chapman shared an illustration of the proposed design of the plaque.

Dr. Chapman shared a photograph of the George W. Bush commemorative plaque for the Bush butternut tree located on west campus as an example of a granite base with a bronze plaque. The proposed location of the Olmsted plaque is between the Tivoli Fountain and the Medal of Honor Memorial, along the main east/west axis that defines the west campus. The plaque and granite base will be installed within a mulched bed to eliminate the need for grass maintenance.

Dependent upon the committee's action, staff plans to begin preparation of the site in January with installation of the granite base and plaque scheduled in spring 2025.

Randy Bolerjack moved, seconded by Katy Taylor, to approve the location and installation of the Olmsted Brothers plaque on Capitol Campus as recommended by the Capitol Campus Design Advisory Committee. A voice vote approved the motion unanimously.

Marathon Trials – Action

Dr. Chapman reported the committee received a briefing on the proposal at its last meeting.

The proposal would relocate the original commemorative sign for the Women's Marathon Trials held in Olympia 40 years ago. Dr. Chapman acknowledged the efforts by Denise Keegan, Chair of the Trials Legacy Committee and other committee members to relocate the sign and add a new sign.

In 2004, a 2' x 3' commemorative marker was placed in the park. The location of the marker is not easily visible to most Marathon Park visitors. The proposal moves the marker to a more prominent location within the park, as well as adding another marker listing all women who competed in the first historic 1984 Women's Olympic Marathon Trials. The signs would be placed side-by-side at an appropriate ADA level for viewing. Both signs would be integrated within a mulched bed to reduce landscaping maintenance. Both proposals were reviewed by the DES Sign Committee, as well as recommended by the CCDAC at its last meeting.

Pending the committee's decision, the Women's Marathon Legacy Committee will move forward on the construction of the signs and partner with Buildings and Ground staff to relocate the existing sign and install the signs together at the new location.

Ms. Taylor thanked Ms. Keegan for her efforts on the project.

Randy Bolerjack moved, seconded by Katy Taylor, to approve the relocation and installation of the Marathon Trials signs in Marathon Park, as recommended by Capitol Campus Design Advisory Committee. A voice vote approved the motion unanimously.

Campus Memorials – Action

Cal Anderson Memorial

Aaron Luoma with HBB, a landscape architecture firm, presented the proposal for approval of the location of the Cal Anderson Memorial.

A major goal of the memorial is to honor Senator Cal Anderson as a civil rights champion and Washington's first open gay legislator. Another goal honors him for his service in the Vietnam War and for his character and legacy. The location is in a quiet area of the campus while ensuring the space is inclusive and accessible to everyone. It was also important that the design works within the historic character of the campus.

Mr. Luoma reviewed the project schedule. A meeting is scheduled with stakeholders on Friday, December 20, 2024 to celebrate the joint efforts accomplished to date. Seven meetings were held with the stakeholders as well as meetings with the SCC and the CCDAC since June 2024.

Stakeholders reviewed suggestions of words to describe Senator Anderson's life and legacy. The words were paired with either pictures or graphic images conveying the words or inspirations. The images served to develop the design framework of the memorial.

The process identified a preferred site for the memorial with the team reviewing historical aspects of the site to identify and understand how the memorial would reside within the context of the historic Olmsted Landscape Plan on the west campus. The site is located east of the Sunken Garden. Because the memorial honors an individual, the proposal conforms to WAC 200-230 memorial guidelines.

The site analysis considered the purpose of the memorial to provide opportunities for sitting, meditating, and contemplating surrounded by the views of the Legislative Building and the greenscape of west camp. The site provides an opportunity for announcements and proclamations. The site complements a curvilinear greensward and pastoral landscape to provide contrast to the Sunken Garden and buffer views and sounds to the north and northwest. The design considered how the memorial could attract pedestrians from the south and be visible from a distance from the east and northeast. The design avoids features of significance over the height of the Sunken Garden. The memorial is transparent and not obstructed providing a break and rhythm from the pathway for visitors to rest and to facilitate engagement with the memorial and its message.

The team, working with stakeholders, considered the shape of the memorial. Feedback conveyed a preference for a 15-foot wide space with a 10-foot offset from the existing Sunken Garden hedge that would not be higher than four feet. The team developed five concept sketches of the memorial and presented them to the stakeholder group. Members selected concept D as the preferred design reflecting a round shape off approximately 20 feet wide featuring a curvilinear seat bench and a focal point of a boulder. The team continued working on the concept with stakeholders to incorporate anti-skate deterrence to both the railings and the seatwall. The bench is flanked by evergreen shrubs to soften the ends. An interpretative sign with companion seating space faces the legislative dome to the southwest. One large boulder is featured serving as the focal point with engravings. An accessible pathway is located off the main pedestrian sidewalk to the south with several steps with a railing facing to the east serving as an area for larger demonstrations, announcements, or proclamations.

The planting pallet includes pollinator-friendly species, native species, deer resistant species, and plants included on the Olmsted native plant list. The color pallet features light blues and purples with a Japanese Snowbell tree selected specifically by Mr. Anderson's husband. A bloom schedule was completed identifying the range of plants and flower colors throughout the year. Mr. Luoma displayed a series of illustrations of planting designs for the memorial and views provided from the memorial to different areas of the campus.

The curved bench and seatwall represents Cal Anderson's collaborative approach of sitting and working with people. The feature is embedded within the landscape using materials that complement adjacent buildings. Several sketches of the bench design were shared with stakeholders with a preferred design identified. The team developed some construction details and three-dimensional models of the bench incorporating drainage

holes and a notch to accommodate subtle lighting. The color recommendation is for a gray/white color of concrete material closely matching the colors of adjacent buildings.

The primary focal boulder of granite features a ribbon of polished stone spiraling up the rough boulder to represent perseverance in the face of uneven terrain; smoothing the path for future generations of lawmakers pursuing civil rights legislation; and meditation and discovery emphasizing movement and celebration. Inscription options include metal inlay or engraved lettering within an inscription area of 210 square inches (limit per WAC 200-230) with the top line featuring Cal Anderson's name in a large font with additional messaging to honor Cal Anderson (to be determined).

The team completed an implementation plan. The plan includes an estimated design schedule for completing the final engineering design and permitting over a period of approximately eight months. Several months are included for bidding and contracting with construction anticipated of six months. DES and the stakeholders received a simplified construction cost estimate of approximately \$312,000 and a more detailed breakdown of individual line items.

Chair Heck complimented the team for development of the design renderings as it helps to visualize and imagine what the space will reflect after completion of the memorial. He asked Mr. Luoma to extend to the stakeholders the deep gratitude by SCC members for their efforts.

Randy Bolerjack moved, seconded by Katy Taylor, to approve the proposed site location for the Cal Anderson Memorial east of the Sunken Garden.

Mr. Bolerjack noted that although there was some pain experienced throughout the design process, he is gratified that those issues were rectified in such a tremendous and thoughtful form. The memorial represents a beautiful and deserved honor for Senator Cal Anderson, an early architect of marriage equality in Washington State and in the country. He encouraged everyone to read his chapter in the book, *Love Equally*, featured in the Secretary of State's Legacy Washington program to learn more about his impact on Washington's journey to marriage equality. The characteristics reflected in testimonials from his colleagues were his hopefulness and kindness. The memorial will serve as a reminder of those for future generations serving the state from Olympia. He thanked the team for such fine work.

Chair Heck added that for those fortunate to have known Cal Anderson and worked with him, every positive adjective that the committee generated in describing him are not rose-colored nostalgic views of who he was as a human being as they are 100 percent correct.

A voice vote approved the motion unanimously.

Fallen Firefighter Memorial

Brian Considine, Legislative Director, Department of Natural Resources (DNR) presented the proposal.

Mr. Considine introduced Chaplin Pat Ellis who serves as the primary contact for the Fallen Firefighter Memorial Foundation. The committee received a presentation on the proposed memorial at its previous meeting.

A Fallen Firefighter Memorial was established in 1989 and was located in the John A. Cherberg Building featuring a memorial shadowbox commemorating firefighters who had lost their lives in the line of duty. Following the Nisqually Earthquake, the memorial was damaged and was never replaced. Over the last several years, DNR, serving as the largest wildland firefighter force in the state, worked with fire service partners to

reestablish a firefighter memorial. Efforts began in 2024 to build a memorial on Capitol Campus resulting in the passage of House Bill 2091 establishing a Fallen Firefighter Memorial on the campus. DNR, serving as the largest wildland firefighter force in the state, worked with fire service partners to reestablish a firefighter memorial and supported passage of the bill in conjunction with other state fire service partners.

Prior to filing the bill, DNR and DES staff and service partners toured the campus to identify different areas to help inform provisions within the bill. The bill was passed unanimously and signed by the Governor in March 2024. DNR's capital budget includes an appropriation to begin initial work on the memorial. The proposal is for approval of the location for the memorial with the understanding that it represents a next step in the process, as the committee will receive regular updates on the design process.

Chaplin Ellis said the project has been of importance to him personally for a number of years having served with Puget Sound Fire for the last 24 years. He also served as the Director of the Washington State Fallen Firefighter's Memorial Foundation and as the State Director for Local Assistance State Team, a project under the National Fallen Firefighter Foundation in support of families following a death of a firefighter.

The first reported death of a firefighter was in 1891 when Herman Larson, a Seattle firefighter was killed in a training accident on the piers in Seattle. Since then, the state has suffered the loss of 281 firefighters who have given their lives in the line of duty.

In 1985, the Washington State Firefighters Association established a Washington State Fallen Firefighter Memorial Service. Each year, the service has been held in Olympia at the Legislative Building. In 2008, he became involved in the service and assumed the responsibilities of the service by coordinating and leading the service. Due to COVID, the service was moved to the Washington State Fire Training Academy. Last year, the service returned to the Legislative Building.

A permanent memorial on Capitol Campus creates a place to honor, remember, and recognize men and women who gave their lives in service to their communities. Within emergency services for both law enforcement and fire service, responders often speak the words of "never forgotten" on a regular basis. The words hold the memory of fallen responders forever. However, they are only words unless some action is forthcoming. The establishment of a memorial would enable etching the names of fallen firefighters in stone and it speaks to the action of never forgetting. Ribbons of those who gave their lives are displayed each year. Having a place to honor and to remember those who gave their lives is extremely important not just to the firefighter community but also to their families and to those they served throughout the state. Each year, the average loss is six to eight firefighters from deaths often caused by cancer, wildland fire, post-traumatic stress disorder (PTSD), or heart attack.

Chaplin Ellis thanked the committee for consideration of identifying a location for a memorial to honor the lives of fallen firefighters.

Mr. Considine shared several photographs of the memorial site for consideration. As part of Major Works projects outlined in WAC 200-230, the proposed site is located to the northeast on the great lawn across from the WWII Memorial, which offers clear sight lines to the Legislative Building. The open space on the great lawn and its proximity to the north diagonal enables fire trucks and large gatherings to assemble. Fire Service partners walked the campus with DES and viewed multiple sites and selected the proposed site. He shared several photographs of the proposed location reflecting different views from the north walkway. The site provides sufficient size and easy access for people and equipment for services and events.

If the committee approves the site of the location, next steps include utilizing the budget to work with DES staff and fire service partners to release a request for proposal for design services.

Ms. Taylor expressed gratitude to Mr. Considine, Chaplin Ellis, and all partners involved, as the process has been underway for some time.

Katy Taylor moved, seconded by Randy Bolerjack, to approve the location of the Fallen Firefighters Memorial on Capitol Campus as presented. A voice vote approved the motion unanimously.

Marcus Whitman Relocation - Information

Matt Jones, Chief Operations Officer, DES, reported the Legislature passed House Bill 1372 replacing the statue of Marcus Whitman in the National Statuary Hall in Washington D.C. with the statue of Nisqually Tribal member Billy Frank Junior, who dedicated his life to advocating for equality, justice, and environmental protections. The legislation affects the Legislative Building housing sculptures of Marcus Whitman and Mother Joseph. The legislation adds Billy Frank, Jr. statue to the Legislative Building.

Mr. Jones reviewed the summary of structural analysis related to relocation of the Marcus Whitman statue currently located in the north foyer on the second floor of the Legislative Building adjacent to the Volunteer Desk. The Billy Frank Jr., statue would be a new addition to the building and reflects the state's contribution to the National Statuary Hall in Washington, D.C. DES and the consultant team evaluated three locations with the first two located on the third floor outside of the Senate and House Chambers and the third on an existing and covered slab at the exterior south portico of the building.

The study scope to identify structural needs included reviewing architectural and engineering records of the Legislative Building, potentially conducting exterior boring and material testing, and pursuing additional studies of the options.

Mr. Jones shared a photograph of the Marcus Whitman statue. The statue weighs 9,144 pounds to include the stone base and requires specialized equipment to move and support the statue. The 11-1/2 foot tall statue must be located in a space that is physically and aesthetically cohesive with the scale of the statue. Options 1 and 2 are located outside of the House and Senate Chambers and would require the space to be centered over a steel girder, yet located within the alcove to avoid restricting access and flow in public hallways. Based on the schematics of the building, the new location is challenging because of safety hazards, security concerns as individuals could hide behind the statue, and concerns about the historic design of the third floor.

The site of Option 3 at the south portico includes an existing vacated steam tunnel in the area requiring additional study with surface penetrating radar to ensure the statue's weight would not compromise the tunnel or other underground infrastructure. Other concerns center on security as the campus has experienced vandalism to other statues and memorials over the last several years as well as environmental exposure.

Chair Heck asked whether the concerns are primarily related to vandalism for this particular statue as opposed to other statues on campus. Mr. Jones said the campus has experienced vandalism to statues that do not resonate with current social justice efforts over the last several years, such as painting on the George Washington statue. Staff is concerned about the placement of the Whitman statue in an exterior location.

The consulting team determined it is not feasible to relocate the statue to the third floor, as there would be significant risk to the structure of the building as well as to the statue. However, it is more feasible to relocate the statue to the exterior portico. The anticipated relocation cost is \$115,000 with an additional \$4,000 to confirm current conditions of the south portico.

Ms. Taylor commented that relocation of the statue will be interesting to follow as to the outcome.

Chair Heck noted that the information within the staff report speaks to the difficulty of moving the statue because of numerous factors. No decision has been rendered on the location of the Billy Frank Junior statue.

Proposed Renaming of Joel Pritchard State Library – Information

Mr. Jones reported the update is informational.

DES received a letter from Representatives Tharinger and Abbarno proposing the renaming of the Joel Pritchard State Library to the Joel Pritchard Building. The building is part of the Legislative Campus Modernization project that is currently under reconstruction with major renovation scheduled for completion by summer 2026.

Mr. Bolerjack said the State Library exists within the Office of the Secretary of State (SOS) including the central library, institutional libraries, and the Washington Talking Book and Braille Library. The Nisqually Earthquake necessitated moving the State Library to another temporary location for approximately one year. However, after more than two decades, the State Library continues to reside in a nondescript office building in Tumwater. The building and site are not ideal for housing the State Library. The notation of “State Library” on the Joel Pritchard Building sign has confused many people. As the department overseeing the State Library, the SOS supports the renaming proposal.

Chair Heck cited language in RCW 43.34.090 Building names:

- (1) The legislature shall approve names for new or existing buildings on the state capitol grounds based upon recommendations from the state capitol committee and the director of the department of enterprise services, with the advice of the capitol campus design advisory committee, subject to the following limitations:
 - a. An existing building may be renamed only after a substantial renovation or a change in the predominant tenant agency headquartered in the building.

Chair Heck said the Senate State Government Committee held a hearing on the proposal on Friday, December 13, 2024. He testified during the hearing about the need to resolve the purpose of the SCC or abolish the committee. It is clear that the RCW directs that the Legislature can only act based on the recommendation of the SCC. One of the concerns raised by naming of buildings by the Senate State Government Committee is the lack of any names of people of color, which is not reflective of the contributions and make-up of the population. He supports acting on the proposal in time for the Legislature to consider action during the 2025 session. He recommended scheduling action at the committee’s March meeting.

Legislative Campus Modernization Project

Brian Pickering, Legislative Campus Modernization Project Manager, provided the update.

Recent accomplishments include substantial completion of the Newhouse Building and reopening of the pedestrian bridge. Staff relocated to the new building with some minor work continuing as the punch list is completed.

The hillside stabilization project was completed for the Pritchard Building project as well as the installation of drill cast concrete piles. Ongoing efforts include work on foundation and site work for expansion of the building. A tower crane was moved to the site at the end of October to assist with the construction project. Next steps are completion of the expansion of the foundation throughout winter and installation of structural steel beginning in late January.

The O’Brien Building Renovation project is not scheduled to begin until after the end of session in 2026.

Mr. Pickering shared and reviewed several photographs of the Newhouse Building project and the Pritchard Building Renovation project.

Chair Heck asked whether the Pritchard project is within budget and on schedule.

Bill Frare, DES FPS Assistant Director, affirmed the project is within budget but because of the presence of unsuitable soils during excavation work for the foundation, the schedule has been affected. Often, when underground work is included on a project, many unknowns are often encountered. The soil issue is located south of the existing structure but is not related to hillside stabilization. Appropriate soil compaction in that area is not possible and will require larger foundations where soil conditions are improved. The issue has affected the project schedule to some degree. The cost to resolve the conditions should be absorbed in the project's budget contingency. The cost is estimated to be approximately \$600,000 to \$700,000 as part of the contingency.

Chair Heck commented on his attendance to the recent ribbon cutting ceremony for the Newhouse Building. During the events, some participants expressed hope that the building would exist for at least 100 years. He reminded members to consider that all decisions related to memorials, plaques, or buildings will affect the state for centuries, which speaks to the importance of each decision.

Mr. Bolerjack added that he also attended the ceremony.

Future Announcements and Adjournment of Meeting – Action

Chair Heck reported the DES website includes up-to-date meeting information for future SCC and CCDAC meetings.

With there being no further business, Chair Heck adjourned the meeting at 11:41 a.m.

Prepared by Valerie L. Gow, Recording Secretary/President
Puget Sound Meeting Services, psmsoly@earthlink.net



Washington State
**DEPARTMENT OF
ENTERPRISE SERVICES**

STATE CAPITOL COMMITTEE

*Lieutenant Governor Denny Heck (Chair), Secretary of State Steve Hobbs (2025 Vice Chair),
Governor Ferguson's Designee Beau Perschbacher, Commissioner of Public Lands Dave Uptegrove's
Designee Katy Taylor*

AND

CAPITOL CAMPUS DESIGN ADVISORY COMMITTEE

*Jordan Kiel (2025 Chair, Architect-2), Kristin Glandon (2025 Vice Chair, Landscape Architect),
Secretary of State Steve Hobbs, Senator Phil Fortunato, Representative Beth Doglio, Representative Joel McEntire,
Alex Rolluda (Architect-1), Marc Daily (Urban Planner)*

JOINT SCC-CCDAC MEETING

FEBRUARY 27, 2025

(REMOTE ACCESS MEETING)

3- Approval of Meeting Minutes - CCDAC

The draft minutes for the
CCDAC Nov 14, 2024 Meeting
were provided in today's meeting packets.

CAPITOL CAMPUS DESIGN ADVISORY COMMITTEE MEETING

Hybrid Meeting

Olympia, Washington 98504

November 14 2024

10:00 a.m.

Draft Minutes

MEMBERS PRESENT:

Marc Daily (Chair), Urban Planner
Kristin Glandon, (Vice Chair) Landscape Architect
Randy Bolerjack (for Secretary of State)
Representative Beth Doglio
Senator Phil Fortunato
Senator Sam Hunt
Joel Kiel, Architect 2
Representative Joel McEntire
Alex Rolluda, Architect 1

MEMBERS ABSENT:

OTHERS PRESENT:

Cynthia Barrett, Department of Enterprise Services	Jordan Kiel, Bassetti Architecture
Emilie Brown, Department of Enterprise Services	Linda Kent, Department of Enterprise Services
Brent Chapman, Department of Enterprise Services	Nouk Leap, Department of Enterprise Services
Brian Considine, Department of Natural Resources	Aaron Luoma, HBB Landscape Architecture
Danielle Creech, Washington State Legislature	Jimmy Martin, Department of Enterprise Services
Ashlee Delaney, Department of Enterprise Services	Patrick McDonald, Office of the Secretary of State
Pat Ellis, Puget Sound Fire	Robert Poche, Department of Enterprise Services
Valerie Gow, Puget Sound Meeting Services	Scott Sarian, Washington State Legislature
Greg Griffith, Olympia Historical Society	Ginny Streeter, Department of Enterprise Services
Craig Gunn, Department of Enterprise Services	Kirti Vijay, Office of Financial Management
Adam Holdorf, Department of Enterprise Services	Ronald Waters
Rachelle Johnson, Department of Enterprise Services	John Wilson-Tepeli, Washington State Legislature
Matt Jones, Department of Enterprise Services	Oliver Wu, Department of Enterprise Services
Denise Keegan, Trials Legacy Committee	

Welcome and Introductions, Announcements & Approval of Agenda

Chair Marc Daily called the Capitol Campus Design Advisory Committee (CCDAC) hybrid meeting to order at 10:04 a.m. A meeting quorum was established.

Members and staff provided self-introduction.

Chair Daily invited a motion to approve the agenda as published.

Kristin Glandon moved, seconded by Randy Bolerjack, to approve the agenda as published. A voice vote approved the motion unanimously.

Chair Daily recognized the service of Senator Sam Hunt. Senator Hunt is retiring from the Senate and this meeting is his last meeting with the committee. The 22nd Legislative District has been fortunate to have Senator Hunt serving the state and the area for many years. His legacy will be undeniable and he will be greatly missed by many.

Senator Hunt said his time on the committee has been enjoyable with the committee accomplishing a great deal. Jessica Bateman will serve in his position as he looks forward to visiting a Mexico beach during the next legislative session.

Approval of Minutes – August 17, 2024 Meeting Minutes – Action

Senator Sam Hunt moved, seconded by Alex Rolluda, to approve the meeting minutes of August 17, 2024 as published. A voice vote approved the motion unanimously.

CCDAC Chair and Vice Chair Nominations – Action

Chair Daily invited nominations for the position of Chair and Vice Chair during 2025.

Senator Hunt nominated Jordan Kiel to serve as 2025 Chair and Kristen Glandon to serve as 2025 Vice Chair.

No other nominations were offered.

By a unanimous vote, Jordan Kiel was nominated to serve as the 2025 CCDAC Chair; and Kristen Glandon was nominated to serve as the 2025 CCDAC Vice Chair for consideration by the Director of Enterprise Services.

Representative Beth Doglio joined the meeting at 10:11 a.m.

Establish CCDAC 2025 Regular Meeting Calendar – Action

Chair Daily reviewed the proposed 2025 meeting dates:

- February 27, 2025 10 a.m.
- May 22, 2025 10 a.m.
- August 14, 2025 10 a.m.
- November 13, 2025 10:00 a.m.

Alex Rolluda moved, seconded by Jordan Kiel, to approve the 2025 regular meeting calendar as presented with discretion to the 2025 CCDAC Chair (or Vice Chair) to modify the dates or times to fulfill the business needs of the Capitol Campus Design Advisory Committee and State Capitol Committee. A voice vote approved the motion unanimously.

Public Comment Period – Information

Jimmy Martin, Legislative Affairs Specialist, Government Affairs, reviewed the format for offering public comment during a hybrid meeting. Public comment is limited to two minutes.

No public comments were offered during the meeting.

Buildings and Grounds Overview – Informational

Olmsted Plaque

Dr. Brent Chapman, Horticulturist and Grounds Property Manager, reviewed the proposed Olmsted Plaque project.

Staff presented the proposal as an informational item during the committee's last meeting. The request is to approve the Olmsted Plaque for installation on Capitol Campus.

The bronze plaque formalizes the contribution of the Olmsted firm to west Capitol Campus as recommended by the Campus Arboretum Advisory Committee. The Olmsted brothers created a tremendous legacy on Capitol Campus. The Advisory Committee recommends including a plaque on the campus to supplement information on the DES webpage about the Olmsted legacy.

The DES Sign Committee approved a new commemorative plaque honoring the Olmsted Brothers' historic landscape design completed in 1929. WAC guidelines specify the regulations for commemorative bronze plaques. The proposal adheres to the guidelines to include a 12" x 18" plaque installed on a granite base. Staff collaborated with Friends of Seattle's Olmsted Parks and DES Communications on the text and sign layout.

Dr. Chapman shared a photograph of the George W. Bush commemorative plaque for the Bush butternut tree located on west campus as an example of a granite base and another bronze plaque following WAC guidelines. The proposed location of the Olmsted plaque is between the Tivoli Fountain and the Medal of Honor Memorial, along the main east/west axis that defines the west campus.

Dependent upon the committee's action, the next step is presenting the proposal to the State Capitol Committee (SCC) on December 16, 2024. Dr. Chapman invited questions from members.

Senator Hunt asked about the location of other plaques for World War II or the Vietnam War. Dr. Chapman responded that no other plaque is located in the same location or vicinity. Installation of the Olmsted plaque requires removal of some grass and adding mulch around the plaque to avoid grass near the plaque.

Representative Doglio inquired as to the impetus for the project and the cost. Dr. Chapman advised that the proposal originated from the Arboretum Advisory Committee. The committee was established after Capitol Campus received accreditation as an International Arboretum. Approximately 18 months ago at one of their meetings, members discussed placing a physical item on campus to honor the Olmsted legacy. The cost of the proposal is approximately \$8,000 with the plaque costing approximately \$1,800 produced by a bronze foundry. The most significant amount of the cost is the granite base. The funds are from the Public and Historic Memorial Fund and from the Buildings and Grounds operating budget for the granite base.

Kristen Glandon moved, seconded by Chair Marc Daily, to recommend approval of the location and installation of the Olmsted plaque on Capitol Campus to the SCC as presented. A voice vote approved the motion unanimously.

Marathon Trials Signage

Dr. Chapman introduced Denise Keegan, Chair of the Trials Legacy Committee. The committee received a briefing on the proposal at its last meeting.

Dr. Chapman reported the Trials Legacy Committee recently celebrated the 40th anniversary of the first women's marathon trials in the United State for the Olympics. Marathon Park was established and named in 1983 when the City of Olympia received the bid to host the first trials.

In 2004, a 2' x 3' commemorative marker was placed in the park. The location of the marker is not ideal as many of the women who participated in the trials and attended the 40th anniversary remarked that the location was hidden and that the marker should be moved to a more visible location. The Trials Legacy Committee presented a proposal to DES to relocate the existing marker to the grassy area at the front entrance to the

park and add another 2' x 3' interpretive sign with the names of the original Trials participants with qualifying time and finish time.

The proposal was presented to and approved by the DES Sign Committee to move the existing sign and add another sign.

Dependent upon the committee's action, the next step is presenting the proposal to the State Capitol Committee on December 16, 2024. Dr. Chapman invited questions from members.

Representative Doglio asked about the cost and funding source for the proposal. Dr. Chapman responded that the Trials Legacy Committee is funding the cost of the new sign and installation and relocation of the existing sign and new sign.

Ms. Keegan thanked the committee for its support of the proposal. Senator Hunt attended several events sponsored by the committee and witnessed the enthusiasm and excitement both by the community and by the women who participated in the trials. Several options are under consideration for the marker. One option is manufacturing the marker in a similar fashion to other markers installed in the park or installing a porcelain marker similar to the existing marker. The committee is steering toward the more expensive porcelain marker because of longevity of the material. The committee received an estimate of approximately \$2,500 for the new marker to include the base, manufacturing, and design of the new marker with the existing marker relocated to the new location. The committee is working with the company to improve the coating of the new marker. The committee is also funding the installation of both markers at a cost of approximately \$2,500 for each marker.

Chair Daily invited consideration of a motion.

Senator Hunt thanked Ms. Keegan for her efforts on the proposal. He was able to view the marathon runners as the trail passed by his home.

Senator Sam Hunt moved, seconded by Chair Marc Daily, to recommend the SCC approve the relocation of the Marathon Trials sign on Marathon Park grounds as proposed. A voice vote approved the motion unanimously.

Legislative Campus Modernization (LCM)

Linda Kent, Chief External Affairs Officer, updated members on the status of Legislative Campus Modernization projects.

DES is on track with the Newhouse Building Replacement project. Outstanding items include building finishes, inspections, and obtaining a temporary Certificate of Occupancy from the City of Olympia by November 15, 2024. If successful, move-in of tenants is scheduled to begin on Monday, November 18, 2024.

Status on the Pritchard Building Expansion and Renovation project includes completion of hillside stabilization in October. A crane installed in early November will be used for site work. Installation of structural steel is scheduled to commence in December and January.

The O'Brien Building project is scheduled to commence after the 2026 legislative session.

Ms. Kent shared several photographs of the Newhouse Building depicting completion of the roof, lighting, cabinetry, and EV chargers in the parking lot. Pritchard Building project photographs depicted completion of a three-foot thick slab for hillside stabilization and installation of 230, 65-foot long auger cast piles to support hillside stabilization. Other photos were of the 188-foot tower crane installed in October and anticipated to remain in place through the end of 2025.

Campus Memorials Update – Informational

Cal Anderson Memorial

Aaron Luoma with HBB Seattle updated members on the Cal Anderson Memorial project.

One main goal of the memorial is to honor Senator Cal Anderson as a civil rights champion as Washington's first open gay legislator. Another goal honors him for his service in the Vietnam War and for his character and legacy within the memorial design. The location will be in a quiet area of the campus while ensuring the space is inclusive and accessible to everyone. It is important the design works within the historic character and complements the campus. The proposed location for the memorial is east of the Sunken Garden. The project must also comply with WAC standards for minor works memorials that include some guiding language on living memorials, fixtures, and furnishings.

Mr. Luoma reviewed the design schedule. Since early June, the project team has been working with stakeholders over six meetings. The project is scheduled to conclude at the end of the year with a celebration with stakeholders of the joint work completed.

Stakeholders represent a diverse mix of individuals providing feedback, review, and suggestions of words to describe Senator Anderson's life and legacy. The words were paired with either pictures or graphic images conveying the words or inspirations. The images serve to develop the design framework for the memorial.

The project team visited the site and reviewed the historical analysis of the location to help identify and understand how the memorial would reside within the context of the historic Olmsted Landscape Plan on the west campus. The team considered the topology of the site, and the hierarchy of major and minor access based on the orientation of buildings, roadways, and pathways. The team considered the social fabric and ways people would move through the site using different pathways and roadways. The site provides both views of the Legislative Building and is within hearing distance of the fountain. Other views to the south are blocked by trees with views and sounds to the north and northwest.

The team developed five concept sketches of the memorial and presented them to the stakeholder group. Members selected concept D as the preferred design reflecting a round shape with a curvilinear seat bench and a focal point of a boulder. Mr. Luoma shared a graphic of the design concept. Feedback was previously received by CCDAC members and the SCC on the design proposals. Following collection of all feedback, the team continued working on the concept with stakeholders to develop more refined designs. He displayed a plan review depicting the curvilinear seat retaining wall integral to an earthen berm located behind it with a flowering deciduous tree located to the northeast with the bench flanked by evergreen shrubs to soften the ends. An interpretative sign with companion seating space faces the legislative dome to the southwest. One large boulder is featured serving as the focal point with engravings. An accessible pathway is located off the main pedestrian sidewalk to the south with several steps with a railing facing to the east serving as an area for larger demonstrations, announcements, or proclamations.

For the singular focal boulder, a number of concepts were developed. Stakeholders supported a design reflective of a granite boulder that could be carved and polished with celebratory motions of engravings to

avoid creating a somber design but a design that celebrates his life and legacy while orienting visitors to the legislative dome.

Additional details reviewed with stakeholders included engravings on the boulder and soft lighting to emphasize the engravings and polished areas. The custom curved bench seat wall creates space for viewing the boulder or views to the east, southwest, or to the legislative dome. The seat's design incorporates curved edges. Several iterations of the concrete bench were completed. The team believes the seat wall serves to complement the architecture of adjacent buildings. Other drawings reflect the location of lights to provide for lighting embedded into the bottom of the seat for a wash of light at the base to represent the transparency of Cal Anderson's life and his goal to provide more civil liberties to his constituents. Construction details and 3D models were developed for the bench for cost estimating and constructability. A planting plan was completed emphasizing a uniform green planting scheme behind the bench and at the end of the bench with pockets of colorful plants, such as annuals at the entrances to the memorial off the main pedestrian pathway. The planting pallet includes pollinator-friendly species, native species, deer resistant species, and plants included on the Olmsted native plant list. The color pallet features light blues and purples with a Japanese Snowbell tree selected specifically by Mr. Anderson's husband. A bloom schedule was completed identifying the range of plants and flower colors throughout the year.

Mr. Luoma shared a series of design renderings of the memorial reflecting specific components and different views of the memorial. The proposed design honors Cal Anderson's legacy as a beacon for civil rights legislation, represents the uplifting work and hope that Cal Anderson offered, enhances visibility, safety and security, adds warmth and usability, and incorporates up-lighting on the boulder to reinforce its symbolic value.

Next steps include a presentation of the proposal to the SCC on December 16, 2024 and a final stakeholder meeting to discuss any feedback from the CCDAC and the SCC.

Chair Daily invited questions from members.

Representative Doglio asked about the funding mechanism and funding source. Mr. Luoma advised that a detailed cost estimate was completed and shared with the stakeholder group to include Senator Jamie Peterson, who supports moving forward with the memorial in 2025. The approximate construction cost is \$312,000. An itemized cost estimate will be provided to DES and Senator Peterson. The cost of the pre-design was \$75,000.

Ms. Kent added that the project design was funded by a legislative appropriation of \$75,000. She offered to follow-up with the committee on more specifics of the appropriation.

Chair Daily asked whether the committee would be considering a recommendation on the design proposal. Ms. Kent advised that the update is for a minor works project, which follows a different approval pathway than a major works project.

Rep Doglio commented that the proposal is a beautiful design.

Ms. Glandon agreed and conveyed appreciation for the thought that was invested in the design.

Chair Daily added how amazing it was of the team and stakeholders to consider words, emotions, and images and translate them into a memorial. Mr. Luoma acknowledged the importance of the contributions of the stakeholders.

Fallen Firefighter Memorial

Chair Daily introduced Brian Considine, Legislative Director, Department of Natural Resources (DNR). The proposal is a request to the committee to recommend approval to the SCC of the proposed location for the Fallen Firefighter Memorial.

Mr. Considine introduced Chaplin Pat Ellis who serves as the primary contact for the Fallen Firefighter Memorial Foundation. The committee received a presentation at its September meeting on the proposed memorial. The request is a recommendation of the proposed site to enable moving forward with a Request for Proposal (RFP) for the project.

In 1989, the Legislature passed a firefighter memorial bill. A Fallen Firefighter Memorial, "Last Alarm" was established in 1989 and located in the John A. Cherberg Building featuring a shadowbox memorial commemorating firefighters who had lost their lives in the line of duty. Following the Nisqually Earthquake, the memorial was damaged and was never replaced. Over the last several years, DNR, serving as the largest wildland firefighter force in the state, worked with fire service partners to reestablish a firefighter memorial. In 2024, DES was contacted about the proposal prior to DNR pursuing a legislative bill during the 2024 session.

The Legislature unanimously passed House Bill 2091 establishing a Fallen Firefighter Memorial on Capitol Campus. The bill was signed by Governor Inslee in March 2024. The capital budget includes \$371,000 to begin pre-design and pre-construction. However, to begin pre-design, an approved location for the memorial is required.

Chaplin Ellis reported he has worked for Puget Sound Fire in south King County for 24 years serving as the lead Chaplin overseeing chaplaincy programs and crisis intervention programs. He grew up in the home of a firefighter for the same department (formerly the Kent Fire Department). In 2008, a local firefighter died from cancer serving as his first introduction to the Washington State Fallen Firefighters memorial service. At that time, he became involved with the annual service. In 2015, the Washington State Fallen Firefighters Memorial Foundation (WSFFF) was created to establish a permanent memorial on the Capitol Campus in Olympia to honor fallen firefighters. He also oversees Washington's Local Assistance State Team, a program of the National Fallen Firefighters Foundation. The team coordinates all firefighter funerals in the state. Following the death of any firefighter, the team works with the fire department and the family to coordinate and host the service, the ceremonies, the honor guard, pipes and drums, and all other arrangements to ensure firefighters are honored for their life of service.

Firefighters are truly heroes of every community often facing situations every day and exposed to secondary traumatic stress and to the traumas of society. In 1891, Herman Larson was the first recorded line of duty death of a firefighter. He was a Seattle firefighter killed in a training accident on the piers in Seattle. Since then, the state has suffered the loss of 281 firefighters who have given their lives in the line of duty. Each year, the average loss is six to eight firefighters with deaths often caused by cancer, wildland fire, post-traumatic stress disorder (PTSD), or heart attack.

In 1985, the Washington State Firefighters Association established a Washington State Fallen Firefighter Memorial Service. Each year, the service was held in Olympia at the Legislative Building. In 2008, he became involved in the service and assumed the responsibilities of the service by coordinating and leading the service. Due to COVID, the service was moved to the Washington State Fire Training Academy. Last year, the service returned to the Legislative Building.

A permanent memorial on Capitol Campus creates a place to continue to honor, remember, and recognize men and women who gave their lives in service to their communities. Within emergency services for both law enforcement and fire service, responders often speak the words of “never forgotten” on a regular basis. The words hold the memory of fallen responders forever. However, they are only words unless some action is forthcoming. The establishment of a memorial would enable etching the names of fallen firefighters in stone and it speaks to the action of never forgetting. Ribbons of those who gave their lives are displayed each year. Having a place to honor and to remember those who gave their lives is extremely important not just to the firefighter community but also to their families and to those they served throughout the state.

Chaplin Ellis thanked the committee for consideration of identifying a location for a memorial to honor the lives of fallen firefighters.

Mr. Considine shared several photographs of the memorial site for consideration. As part of Major Works projects outlined in WAC 200-230, the proposed site is located to the northeast on the great lawn across from the WWII Memorial, which offers clear sight lines to the Legislative Building. The open space on the great lawn and its proximity to the north diagonal enables fire trucks and large gatherings to assemble. Fire Service partners walked the campus with DES and viewed multiple sites and selected the proposed site as it matches the needs and provides visibility with the dome in the background.

The next step is a recommendation by CCDAC on the proposed location. Following selection of the memorial location, the project will move forward with the appropriation to work with DES staff, fire service partners, and others to prepare a RFP for predesign services. The committee will receive briefings on conceptual designs in the future.

Chair Daily invited questions from members.

Representative Doglio asked about the plan for requesting funding from the Legislature. Mr. Considine said the cost of the memorial has been estimated at this time based on the projected construction cost. The current appropriation of \$371,000 is for predesign and pre-permitting with an earmark of a potential construction cost for the memorial between \$4 million and \$5 million. Staff anticipates the memorial will be expensive because of permitting and material costs. The funding of \$371,000 enables moving forward to complete the pre-work necessary to prepare a legislative funding request with a better cost certainty.

Ms. Glandon asked why the preferred site was selected versus other sites that were considered on the campus. Mr. Considine explained that the annual ceremony was a major driving factor for the preferred site. Pictures reflect that the annual memorial ceremony has been held in that location because of the need for space for fire engines. Other areas that were considered lacked accessibility for large fire engines, traffic, and crowd size. Staff explored sites based on traffic, access, security and safety, and the ability to accommodate both the ceremony and fire equipment. Staff and fire service partners selected the preferred site as it meets all the criteria, size, prominence, and the site provides a view of the dome in the background.

Chair Daily commented on the observation that the area tends to be wet and that an annual event speaks to the importance of proper drainage for the site. He asked whether the predesign and the bid would ensure adequate drainage is provided on the site. Mr. Considine said staff and fire service partners will work with DES to address drainage and wet conditions on the site to avoid impacts to other campus areas.

Senator Hunt recalled that the Law Enforcement Memorial was substantially funded by other organizations. He asked about the potential of firefighter organizations contributing to the cost of the memorial. Mr. Considine said that the bill provisions considered whether the state was financially able to help construct

the memorial in partnership with DNR with ongoing costs the responsibility of DNR and general maintenance performed by DES. Language in the bill speaks to collaborating with a firefighter organization to assume responsibilities of the memorial after construction.

Chair Daily invited consideration of a motion.

Senator Hunt said that although memorials are important and worthy, he stressed the importance of ensuring a thorough review and selection process for placement of future memorials on the campus.

Mr. Considine responded that after approaching DES staff, he was informed that DES staff completed a mapping exercise based on another memorial entering a pre-design phase. Staff identified different areas throughout the campus for placement of memorials. The site visit with DES staff included preferred sites for memorials. It is important to DNR that the location selection is responsible and reflective of the importance of the entire campus.

Ms. Kent added that staff is engaged in a refinement process and anticipates producing a list of opportunity sites for future memorials to vet with other memorial sponsors/stakeholders when DES receives memorial proposals. Staff plans to share the outcome of those efforts when completed.

Representative Doglio stressed the importance of being attentive to the state budget situation. Mr. Considine acknowledged his awareness of the budget situation as he is working on DNR's budget. He is aware of the state's budget deficit and plans to work closely with fire service partners to ensure any design considers costs.

Senator Phil Fortunato joined the meeting at 11:23 a.m.

Chair Marc Daily moved, seconded by Kristen Glandon, to recommend the SCC approve the proposed location for the Fallen Firefighter Memorial. A voice vote approved the motion unanimously.

Ms. Kent noted that the funding of \$371,000 was included in the fiscal year 2024 supplemental capital budget.

Proposed Renaming of Joel Pritchard State Library – Information

Ms. Kent reported the SCC and the CCDAC received a proposal from Representatives Steve Tharinger and Peter Abbarno to rename the Joel Pritchard State Library to the Joel Pritchard Building to eliminate any confusion that the reconstructed and renovated building would no longer house the State Library. Ms. Kent shared a copy of the request from the Representatives.

Senator Fortunato said a stone placed in front of the building includes the inscription of "Library." He asked whether the stone was removed. Ms. Kent said she would follow up with the project team as the name on the building sign continues to reflect "Joel Pritchard State Library." She is unsure whether the sandstone etching with the building's original name currently exists on the site.

Randy Bolerjack commented that since the Office of the Secretary of State supervises the State Library, he appreciates the effort to eliminate the confusion because the building no longer houses the State Library. The State Library is currently located in leased office space in Tumwater. The Secretary of State Office looks forward to identifying another location for the State Library in the near future. Removal of "State Library" from the Joel Pritchard Building name is worthy of consideration as it will reduce confusion to the public.

SCC/CCDAC Building Naming/Renaming – Information

Ms. Kent reported the purpose of the briefing is to provide feedback on the proposal to the Legislature for naming or renaming a new or existing state building. The proposal creates a structure for SCC/CCDAC to receive building naming proposals and to support both committees in making an informed decision when rendering a recommendation to the Legislature on a proposed name or rename and to ensure the informed decision includes providing public notice of the opportunity to comment at SCC and CCDAC meetings on any proposal.

When DES receives a naming proposal, the request is presented as an informational briefing to both committees followed by a decision at a second meeting. The process is a component of other processes. Decisions by the Legislature following recommendations by the committees follow the legislative process. The proposal is designed to support the CCDAC and SCC in forwarding recommendations to the Legislature.

RCW 43.34.090 states the Legislature may name new buildings and sets criteria for when an existing building may be eligible for renaming. Provisions call for a recommendation from CCDAC and SCC when a building name proposal is received.

Two building naming proposals moved through the process in 2023 to reaffirm the name of the Irving R. Newhouse Building for the new replacement building and naming the Natural Resources Building as the Jennifer Belcher Building. Both naming proposals were recommended to the Legislature. The recommendations continue to stand as neither proposal completed the legislative process and died in committee. The Legislature could however, reconsider the proposals during the 2025 legislative session.

Chair Daily asked whether staff anticipates the naming of both buildings to be re-presented to the committee in the future. Ms. Kent advised that the briefing is only informational for the committee. Senator Hunt had requested a discussion on the process. Any desire to update the process would be reviewed by both committees for a recommendation.

Senator Hunt said that although he does not object to continuing the name of the Irving R. Newhouse Building, his concern surrounds not following the process established in the RCW for naming the building. Although, the naming proposals were not approved by the Legislature, there was an assumption that the Irving R. Newhouse Building name would continue for the new building without the benefit of pursuing the naming process, which was his concern.

Ms. Kent offered to provide some information on the naming request for the Newhouse building and deferred to Senator Fortunato for additional comments.

Senator Fortunato said he believed the RCW only applied if the nature of the building changed. For example, the Pritchard Building no longer houses the State Library. The Newhouse project essentially did not change the nature of the building as it continues to exist as an office building. He believed the RCW did not apply in that circumstance other than the building is a new building. He asked whether that was a correct assumption.

Ms. Kent cited RCW provisions applicable to naming or renaming a building. The RCW applies when there has been a substantial renovation or a change in the predominant tenant. Both conditions would apply for renaming the building. As the building was demolished and replaced, the RCW applies to the Newhouse Building. In terms of the proposal for naming the building, the RCW does not speak specifically to

replacement buildings. The intent of the legislative proviso was unclear as to the name of the new building. DES staff consulted with the Office of the Attorney General (AGO) and the Legislature for guidance on the name as the project included signage for the new building to achieve substantial completion and to avoid any impacts on the project scope, schedule, and budget. The naming issue was unclear and continued to remain unclear after consulting the AGO with staff advised to consult the Legislature with respect to the intent of naming the building. Staff consulted with caucus leadership with the building name remanded to the Project Executive Team for the Legislative Campus Modernization project. The Project Executive Team recommended retaining the building's existing name.

Senator Hunt reiterated his concern that the naming process did not follow the process established by the RCW. Provisions in the RCW stipulate that the Legislature shall approve names of new or existing buildings. His question is whether the Legislature has ever approved the name of the building.

Representative Doglio questioned the need to name the building so quickly. Ms. Kent responded that based on the City of Olympia's requirements, a certificate of occupancy permit could not be issued without a building name. The certificate is required for tenants to move into the new building.

Senator Hunt pointed out that DES could have referred to the building as the "Senate Office Building" until the naming process was completed. Ms. Kent said the issue surrounded the entire replacement of an existing building that was named versus a new building with no name. The issue was whether the replacement building was considered a major remodel. The situation created a gray area in the current provisions within the RCW. She noted that the building remains eligible for renaming.

Senator Fortunato questioned whether any building on the campus would be eligible for renaming.

Ms. Kent replied that if a building undergoes a major remodel, it would be eligible. Additionally, if a building has never been named, the building would be eligible for naming or if there was a change in the predominant tenant of the building. Some buildings on the campus have been named while other buildings have not been formally named.

Senator Hunt cited some buildings with no names such as the Natural Resources Building, Office Building 2, and Office Building 3 that would be eligible for naming.

Senator Fortunato requested a list of buildings lacking a name.

Ms. Kent advised that she would forward information on the status of names of buildings on the campus. The RCW applies only to campus buildings and not other state buildings located in other areas of the state.

Senator Hunt added that DES has published a list of all state buildings in the state.

Future Announcements and Adjournment of Meeting – Action

Chair Daily reported the next CCDAC meeting is scheduled on Thursday, February 27, 2025 at 10 a.m. Information on all CCDAC/SCC meetings is available on the DES website.

With there being no further business, Chair Daily adjourned the meeting at 11:45 a.m.

Puget Sound Meeting Services, psmsoly@earthlink.net

DRAFT



Washington State
**DEPARTMENT OF
ENTERPRISE SERVICES**

STATE CAPITOL COMMITTEE

*Lieutenant Governor Denny Heck (Chair), Secretary of State Steve Hobbs (2025 Vice Chair),
Governor Ferguson's Designee Beau Perschbacher, Commissioner of Public Lands Dave Uptegrove's
Designee Katy Taylor*

AND

CAPITOL CAMPUS DESIGN ADVISORY COMMITTEE

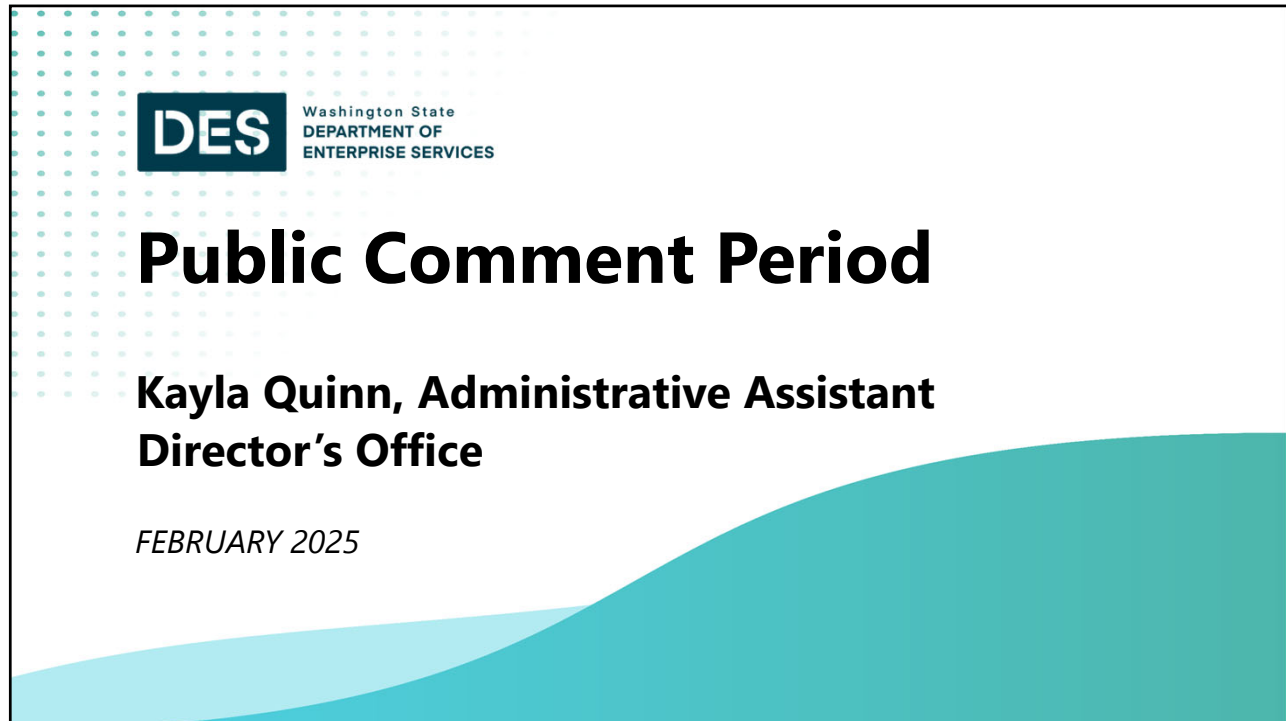
*Jordan Kiel (2025 Chair, Architect-2), Kristin Glandon (2025 Vice Chair, Landscape Architect),
Secretary of State Steve Hobbs, Senator Phil Fortunato, Representative Beth Doglio, Representative Joel McEntire,
Alex Rolluda (Architect-1), Marc Daily (Urban Planner)*

JOINT SCC-CCDAC MEETING

FEBRUARY 27, 2025

(REMOTE ACCESS MEETING)

4 – Public Comment Period



DES Washington State
DEPARTMENT OF
ENTERPRISE SERVICES

Public Comment Period

**Kayla Quinn, Administrative Assistant
Director's Office**

FEBRUARY 2025

1

PUBLIC COMMENT PERIOD INSTRUCTIONS

Please find the below steps to participate during the public comment period:

- To request an opportunity to speak, please type your first and last name in the Q&A section of the Zoom webinar.
- DES Staff will let the SCC chair know who has signed up for public testimony.
- DES Staff will allow the individual to speak and ask that they unmute their mic to do so.
- Failure to unmute may forfeit the individual's opportunity to speak. Forfeiture will be at discretion of the SCC chair.
- Individuals will be given 2 minutes to provide public testimony.
- **Please note:** If you submitted written testimony via email, your letter was distributed and please only summarize your comments.

2

THANK YOU



SCC-
CCDACPublicComments@d
es.wa.gov



(360)790-7758



Des.wa.gov



Washington State
**DEPARTMENT OF
ENTERPRISE SERVICES**

STATE CAPITOL COMMITTEE

*Lieutenant Governor Denny Heck (Chair), Secretary of State Steve Hobbs (2025 Vice Chair),
Governor Ferguson's Designee Beau Perschbacher, Commissioner of Public Lands Dave Uptegrove's
Designee Katy Taylor*

AND

CAPITOL CAMPUS DESIGN ADVISORY COMMITTEE

*Jordan Kiel (2025 Chair, Architect-2), Kristin Glandon (2025 Vice Chair, Landscape Architect),
Secretary of State Steve Hobbs, Senator Phil Fortunato, Representative Beth Doglio, Representative Joel McEntire,
Alex Rolluda (Architect-1), Marc Daily (Urban Planner)*

JOINT SCC-CCDAC MEETING

FEBRUARY 27, 2025

(REMOTE ACCESS MEETING)

5 – Joel Pritchard State Library Renaming

DECISIONAL ITEM



Joint State Capitol Committee and Capitol Campus Design Advisory Committee

February 27, 2025

5A- Joel Pritchard State Library Renaming

Purpose: **Decisional**

Sponsor(s): Rep. Steve Tharinger 24th LD (Chair) (360) 786-7904
Rep. Peter Abbarno 20th LD (Ranking member) (360) 786-7896
House Capital Budget Committee

Presenters: Linda Kent, DES Chief External Affairs Officer, linda.kent@des.wa.gov,
(360) 972-6413

Background:

The Legislature has the authority to approve the naming of new or existing buildings on the State Capitol grounds. This authority is based on recommendations from the SCC and the Director of the Department of Enterprise Services (DES), with advice from the Capitol Campus Design Advisory Committee (CCDAC) ([RCW 43.34.090](#)).

A formal process for naming and renaming campus buildings came before the State Capitol Committee for decisional approval, based on recommendations made by the Capitol Campus Design Advisory Committee, on October 16, 2023. This process was unanimously adopted by the State Capitol Committee.

Description:

A letter was submitted to the Capitol Campus Design Advisory Committee and the State Capitol Committee by Representatives Steve Tharinger and Peter Abbarno proposing to rename the Joel Pritchard State Library, to the *Joel Pritchard Building*. The Joel Pritchard State Library is currently under reconstruction and major renovation as part of the Legislative Campus Modernization project with completion estimated in summer of 2026, with signs for the building ordered in the first quarter of 2026.

Next Steps:

- State Capitol Committee will send recommendation to the Legislature.

Requested Action:

DECISIONAL ITEM –

- CCDAC will make a recommendation to SCC.
- SCC will make a recommendation to the Legislature.

List of Attachments:

5B- SCC-CCDAC Oct 29, 2024 Letter_Pritchard_Renaming

5C- SCC-CCDAC Building Name proposal Reference page
5D- Building naming and renaming process fact sheet

State of
Washington
House of
Representatives



October 29, 2024

State Capitol Committee
Lieutenant Governor Denny Heck, Chair
Capitol Campus Design Advisory Committee
Mr. Marc Daily, Chair

Dear Members of the State Capitol Committee and the Capitol Campus Design Advisory Committee:

Subject to RCW 43.34.090, the Legislature has the authority to approve the names of new buildings on the State Capitol grounds and existing buildings if substantially renovated.

As you are aware, the Joel Pritchard State Library is undergoing an extensive rehabilitation and expansion project. This 1958 facility, constructed in the midcentury-modern style, once served as the State Library, but has, for many years, housed the Code Reviser's Office and the Legislative Service Center (LEG-TECH). While the revitalized and expanded facility will retain much of its historic character, it will continue to have no library function. Instead, the facility will provide office space for House members, the Code Reviser's Office, and LEG-TECH, as well as multipurpose meeting space and a cafe.

Given that the rehabilitated facility will continue to function as an office building, but with an expanded public-facing use, we are concerned that using "State Library" in the building's official name may cause undue confusion to the public. Therefore, we urge both committees to support renaming this facility as the "Joel Pritchard Building" to reflect its current use—while continuing to honor the profound legislative contributions and legacy of Joel Pritchard.

If you have questions, please contact us, or the House Capital Budget staff. Thank you for your consideration.

Sincerely,

Representative Steve Tharinger

Representative Peter Abbarno



Washington State
**DEPARTMENT OF
ENTERPRISE SERVICES**

STATE CAPITOL COMMITTEE

*Lieutenant Governor Denny Heck (Chair), Secretary of State Steve Hobbs (2025 Vice Chair),
Governor Ferguson's Designee Beau Perschbacher, Commissioner of Public Lands Dave Uptegrove's
Designee Katy Taylor*

AND

CAPITOL CAMPUS DESIGN ADVISORY COMMITTEE

*Jordan Kiel (2025 Chair, Architect-2), Kristin Glandon (2025 Vice Chair, Landscape Architect),
Secretary of State Steve Hobbs, Senator Phil Fortunato, Representative Beth Doglio, Representative Joel McEntire,
Alex Rolluda (Architect-1), Marc Daily (Urban Planner)*

JOINT SCC-CCDAC MEETING

FEBRUARY 27, 2025

(REMOTE ACCESS MEETING)

6 – Campus Memorials Update

DECISIONAL ITEM

A. CAL ANDERSON MEMORIAL



Joint State Capitol Committee and Capitol Campus Design Advisory Committee

February 27, 2025

6A- Campus Memorials- Cal Anderson Memorial

Purpose: **Decisional**

Sponsor(s): Washington State Department of Enterprise Services
Presenters: Linda Kent, DES Chief External Affairs Officer, linda.kent@des.wa.gov,
(360) 972-6413

Description:

The Department of Enterprise Services (DES) has been engaged in stakeholder meetings on an envisioned Cal Anderson Memorial on the Capitol Campus. In February 2024, DES and stakeholders conducted a walking tour to establish preferred siting locations for the new memorial. A site just east of the Sunken Garden is the preferred site for this new memorial.

During the 2024 Legislative Session, the Legislature funded \$75,000 through [ESSB 5949](#), Supplemental Capital Budget, to begin pre-design of the new memorial. DES executed a contract with Landscape Architect firm HBB Seattle to carry out the pre-design process.

HBB Seattle engaged a stakeholder group in a series of meetings that concluded in December of 2024 and resulted in stakeholders identifying a preferred design concept. The stakeholder meetings also covered information on maintenance and costs for the memorial. Stakeholders include the Washington State LGBTQ Commission, Department of Veterans Affairs (DVA), Secretary of State (SOS), Washington State Arts Commission, State Legislators and their constituents, and LGBTQ advocacy groups.

The concept was provided as informational to CCDAC and SCC at the 2024 fourth quarter meetings.

Next Steps:

- State Capitol Committee will send recommendation to the Legislature.

Requested Action:

DECISIONAL ITEM –

- CCDAC will make a recommendation to SCC.
- SCC will make a recommendation to the Legislature.

List of Attachments:

6B- SCC-CCDAC Feb 27 2025- Cal Anderson Memorial PPT



Cal Anderson Memorial

Linda Kent
Chief External Affairs Officer

*Joint SCC - CCDAC Meeting
Feb. 27, 2025*

1

Design concept for reimagined Senator Cal Anderson Memorial

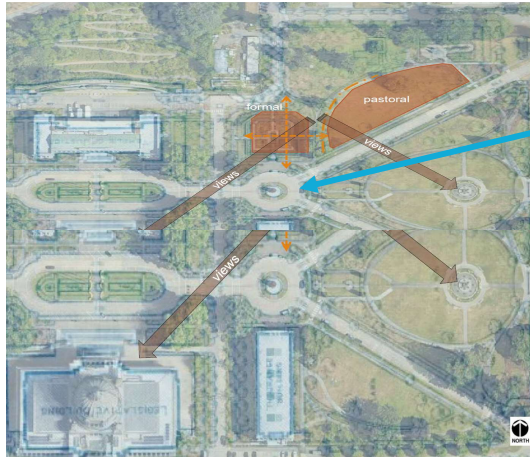
Stakeholders' preferred design concept goals:

- Honor Sen. Cal Anderson as a civil rights champion and Washington's first openly gay legislator
- Honor his service in the Vietnam War
- Reflect his character, legacy, and leadership
- Create a quiet place for contemplative space
- Provide an inclusive and accessible space for users to feel safe
- Complement the historic West Capitol Campus



2

Location Approved by SCC: East of the Sunken Garden



Memorial location

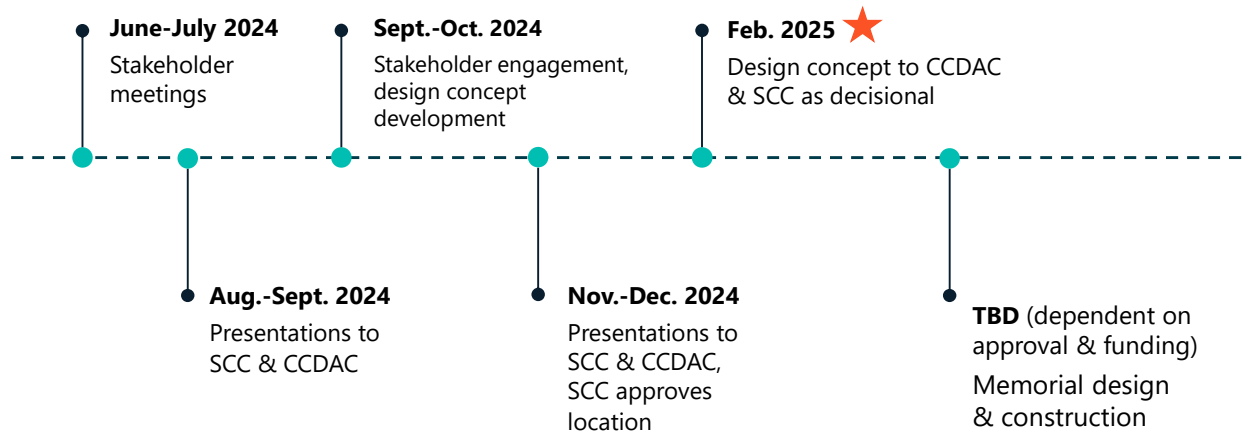


Ariel view of future memorial location

View of future memorial location from walking path

3

Timeline



DES completed historical, social, and environmental analyses during design development.

4



5

Preferred design concepts & meanings

Boulder with polished stone

perseverance, smoothing path for future generations, progression

Plant life

vision, hope, meditative space

Curved bench

collaboration, community, reflection

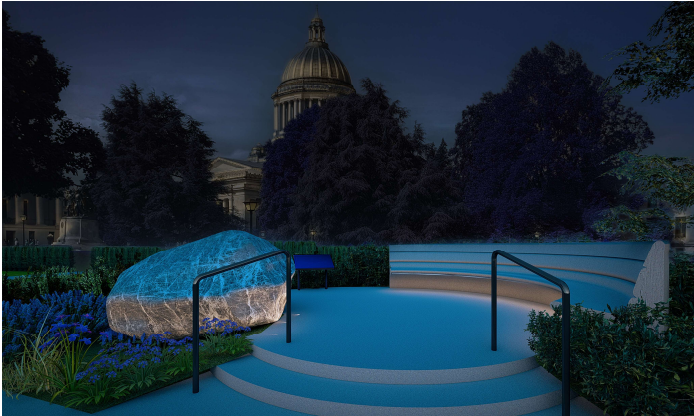
Engraving, inlay or lettering

to honor Sen. Cal Anderson



6

Preferred design concepts & meanings



Uplifting lighting

- Honor Cal Anderson's legacy as a beacon for civil rights legislation
- Represent uplifting work and hope Cal Anderson offered
- Enhance visibility, safety and security
- Add warmth and usability
- Reinforce symbolic value

7

Funding (pending)



Approximately \$125,000 to move from conceptual to final design (includes landscape architect, civil engineering, electrical consultants).



\$312,715 to construct the memorial (if done in single phase).



\$16,285 annually to maintain memorial.

8

What's next if concept is approved?



Design, approximately 8 months. Includes engagement with stakeholders.



Bidding, permitting (if needed), approximately 3-4 months.



Construction, approximately 6 months.

9

Action needed

Recommendation on stakeholders' preferred design concept.

- Approve
- Deny
- Modify



10

THANK YOU



Linda Kent
linda.kent@des.wa.gov



360-972-6413



[Department of Enterprise
Services \(des.wa.gov\)](http://des.wa.gov)



Washington State
**DEPARTMENT OF
ENTERPRISE SERVICES**

STATE CAPITOL COMMITTEE

*Lieutenant Governor Denny Heck (2025 Chair), Secretary of State Steve Hobbs (2025 Vice Chair),
Governor Ferguson's Designee Beau Perschbacher, Commissioner of Public Lands Dave Uptegrove's
Designee Katy Taylor*

AND

CAPITOL CAMPUS DESIGN ADVISORY COMMITTEE

*Jordan Kiel (2025 Chair, Architect-2), Kristin Glandon (2025 Vice Chair, Landscape Architect),
Secretary of State Steve Hobbs, Senator Phil Fortunato, Representative Beth Doglio, Representative Joel McEntire,
Alex Rolluda (Architect-1), Marc Daily (Urban Planner)*

JOINT SCC-CCDAC MEETING

FEBRUARY 27, 2025

(REMOTE ACCESS MEETING)

**7 – Office of the Secretary of State (OSOS) Library Archives Building
Proposal**

INFORMATIONAL ITEM



Joint State Capitol Committee and Capitol Campus Design Advisory Committee

February 27, 2025

7A- Office of the Secretary of State Library Archives Building Proposal

Purpose: **Informational**

Sponsor(s): Office of the Secretary of State
Presenters: Randy Bolerjack, Deputy Secretary of State

Description:

Washington's State Archives and State Library buildings are at risk. In recent years, flooding, water leaks and failing internal control systems have put important documents at risk of irreparable damage, including our State Constitution and other one-of-a-kind records that tell the stories of our communities and celebrate our collective cultures. To preserve documents and provide safe and secure spaces for Washingtonians to browse collections, the state desperately needs to build the Washington State Library Archives Building (LAB).

The General Administration (GA) Building has been vacant since 2018 due to serious life and health safety risks. Department of Enterprise Services (DES), the agency tasked with maintaining state owned land and buildings on the Capitol Campus, requested funds in their 2025-27 capital budget to demolish the building. The Office of the Secretary of State (OSOS) is supporting this request, with a plan to make it the site of a new LAB. OSOS proposes a beautiful, modern, purpose-built, and **publicly accessible** home to replace several OSOS buildings in Olympia. Capitol Campus visitors will have an exponentially greater opportunity to experience our state's history by accessing our collections. Then they may visit evocative memorials on the Capitol Campus on their way to meet their representatives in state government.

OSOS is proceeding with a feasibility study to determine if these state treasures can live within a facility at the location of the GA Building, with technical support from DES and architects at Miller Hull, which is the firm working on the new Newhouse Building. Upon completion, and assuming that study confirms feasibility and support within the Legislature, OSOS will begin design.

Cost/Appropriation:

OSOS revenues from document recording fees directed to the project will combine with rents paid for various OSOS leases to fund repayment of a Certificate of Participation (COP). The difference between revenues available and total cost will be requested of the State Capital Budget during the 2027-2029 biennium, assuming demolition of the GA Building can be accomplished in 2025-2027 biennium.

Next Steps:

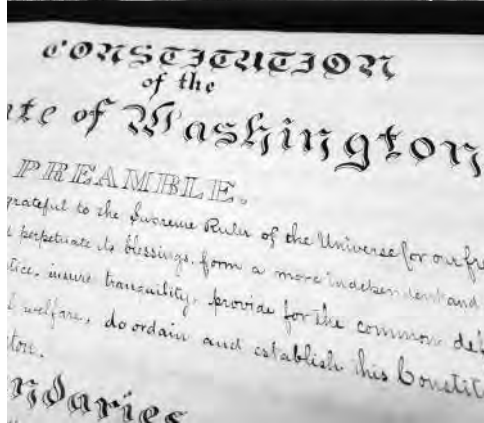
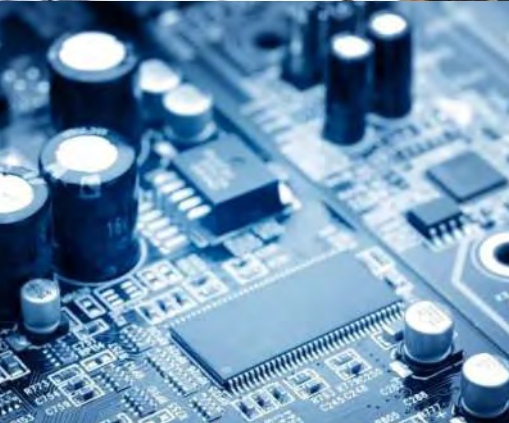
- Complete feasibility study during the 2025 legislative session, with technical support from DES and Miller Hull
- See attached project schedule

Requested Action:

INFORMATIONAL ITEM - This is an informational item. No action by SCC or CCDAC is necessary.

List of Attachments:

Attachment: 7B- SCC-CCDAC Feb 27, 2025- OSOS Library Archives Building Proposal PPT



OSOS
LIBRARY ARCHIVES BUILDING
CAPITOL CAMPUS
SCC + CCDAC MEETING
FEASIBILITY STUDY PROGRESS

February 27, 2025
Prepared by The Miller Hull Partnership, LLP

OSOS - RENDERING OF ENTRY LOBBY AT TUMWATER SITE



ONGOING/ADJACENT PROJECTS - OPPORTUNITIES FOR SYNERGIES



SLOPE STABILIZATION STUDY
FUNDING REQUESTED FOR DESIGN | LED BY DES

WORK TO INCLUDE:

- UPDATING 2010 EVALUATION OF 3 CRITICAL SLOPES ADJACENT TO CAPITOL LAKE
- DESIGN + PROJECT PRIORITIZATION

OSOS FEASIBILITY STUDY - GA SITE
LED BY OSOS

WORK TO INCLUDE:

- DETERMINE UPDATED PROJECT SCOPE
- DETERMINE VIABILITY ON THE GA SITE
- ESTIMATE PRELIMINARY COST OF PROJECT
- DETERMINE DELIVERY METHOD
- INVESTIGATE SCHEDULE SYNERGIES WITH OTHER PROJECTS ON SITE

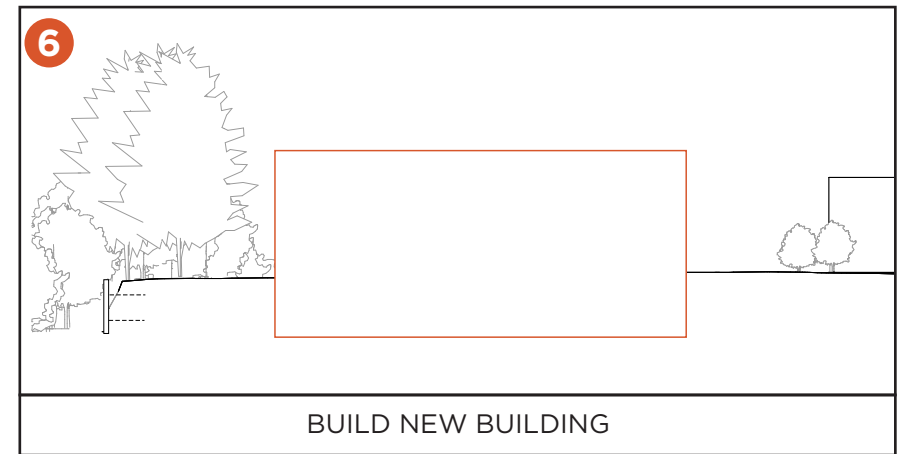
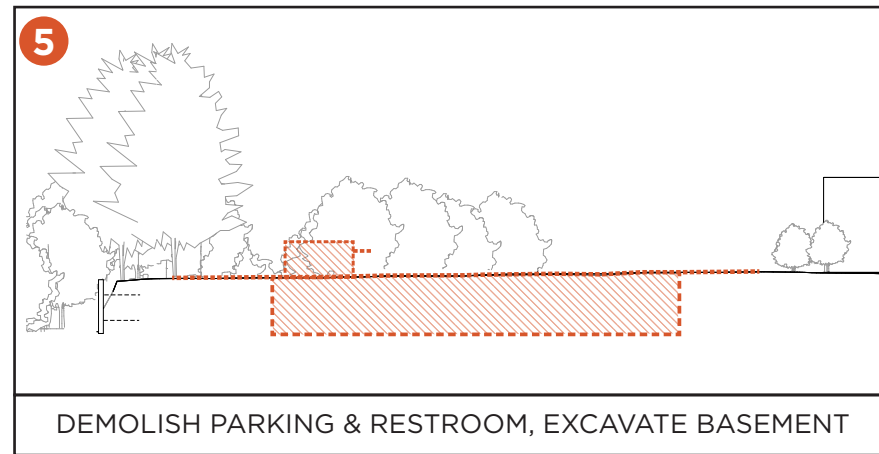
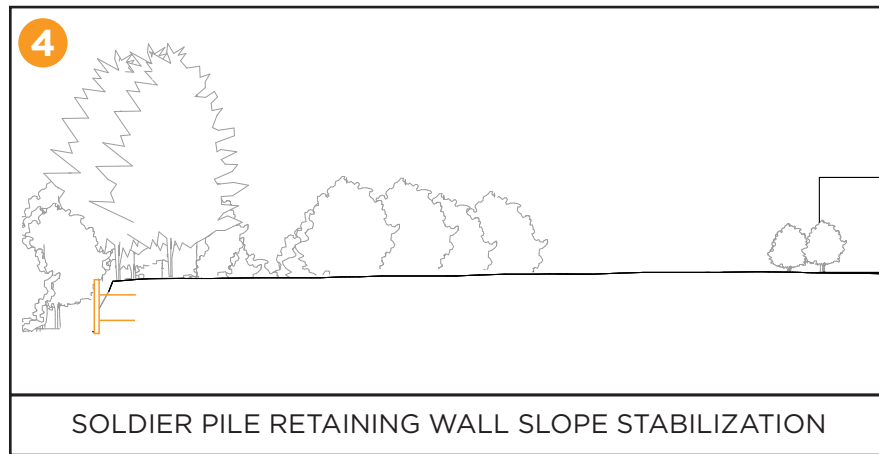
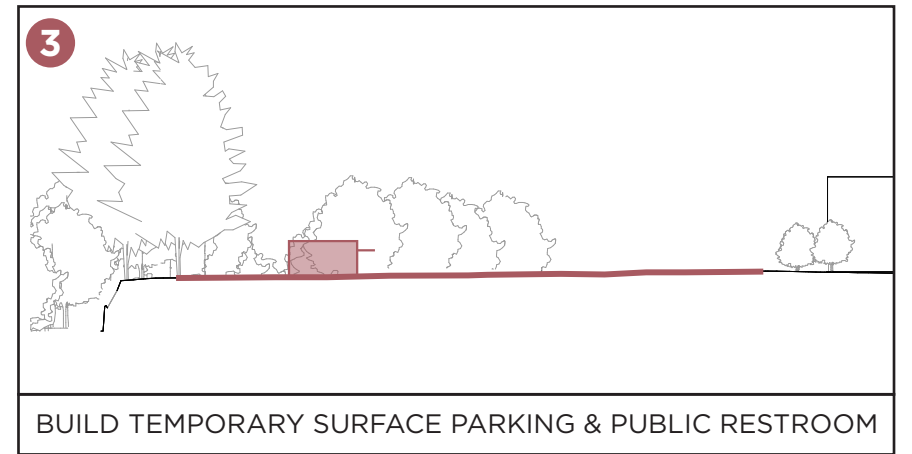
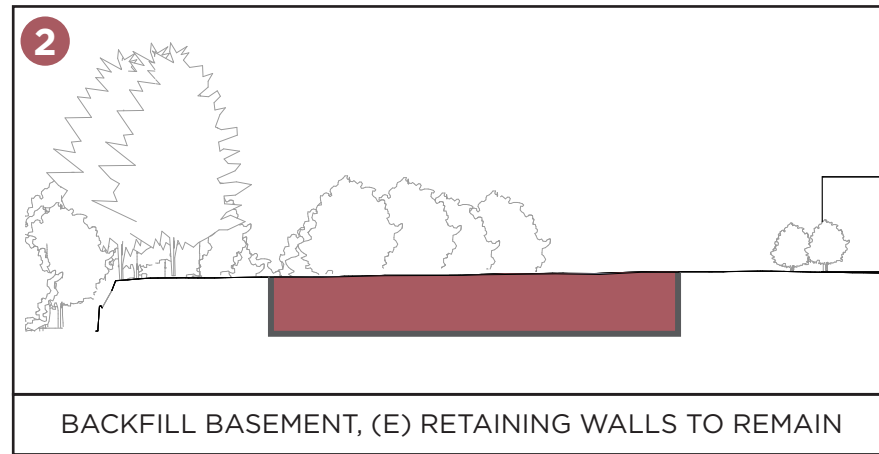
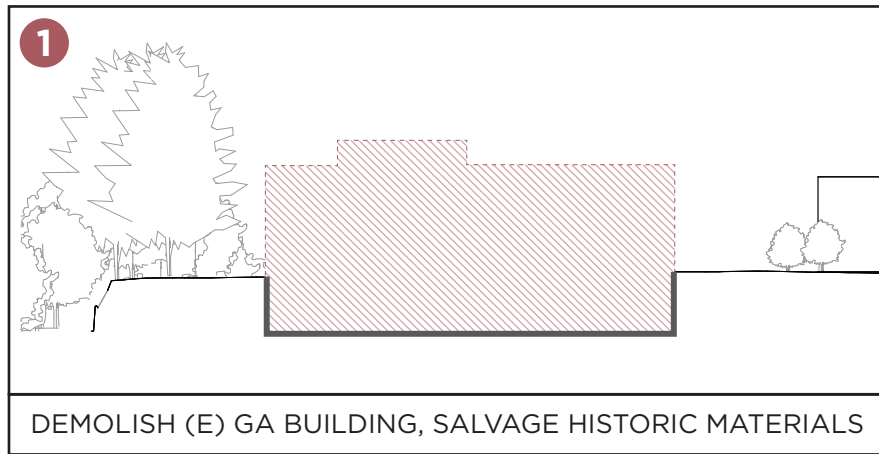
GA DEMOLITION + SURFACE PARKING
±\$18 MILLION | LED BY DES

WORK TO INCLUDE:

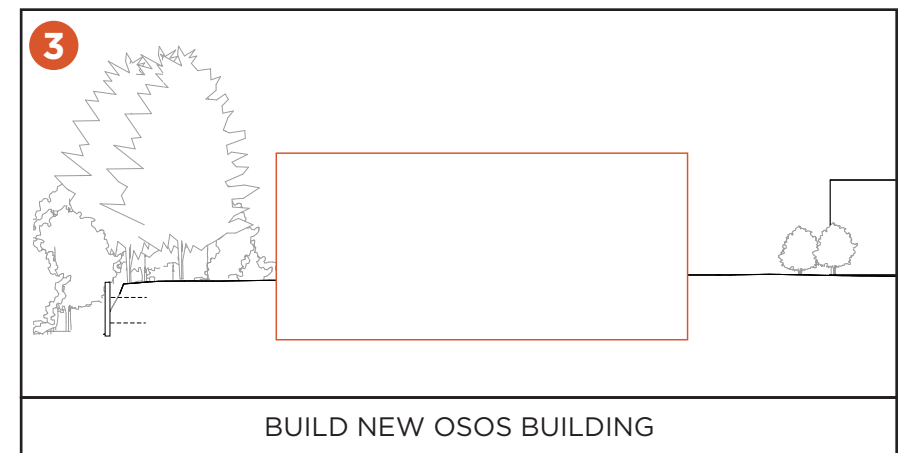
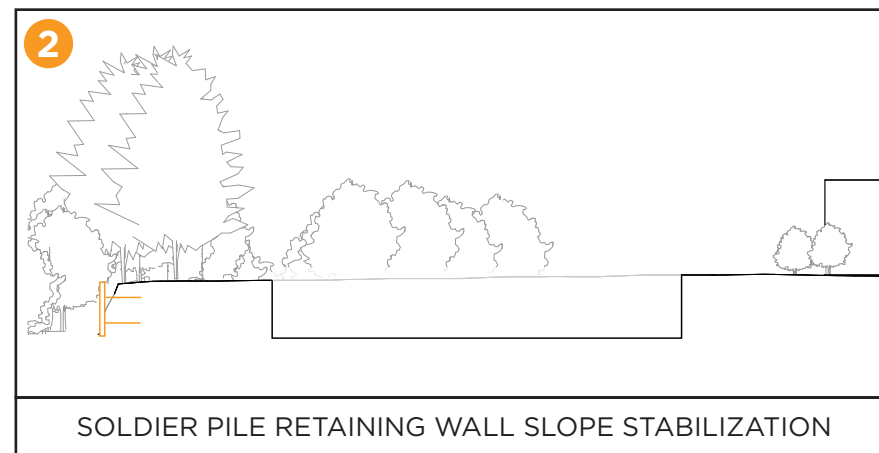
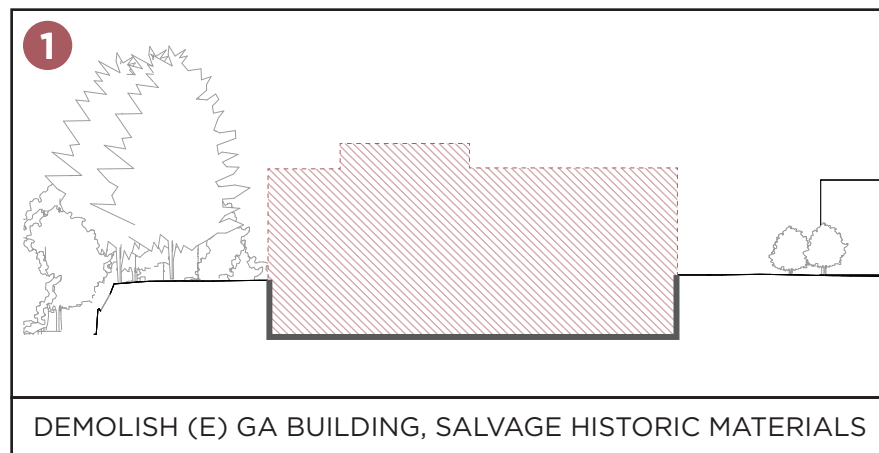
- DEMOLITION OF GA BUILDING + HISTORICAL MATERIAL SALVAGE
- BASEMENT WALLS TO REMAIN + BACKFILL TO EXISTING GRADE
- NEW STORMWATER INFRASTRUCTURE
- PARTIAL SOLDIER PILE WALL STABILIZATION
- TEMPORARY SURFACE PARKING + VISITOR RESTROOMS

CAL ANDERSON MEMORIAL

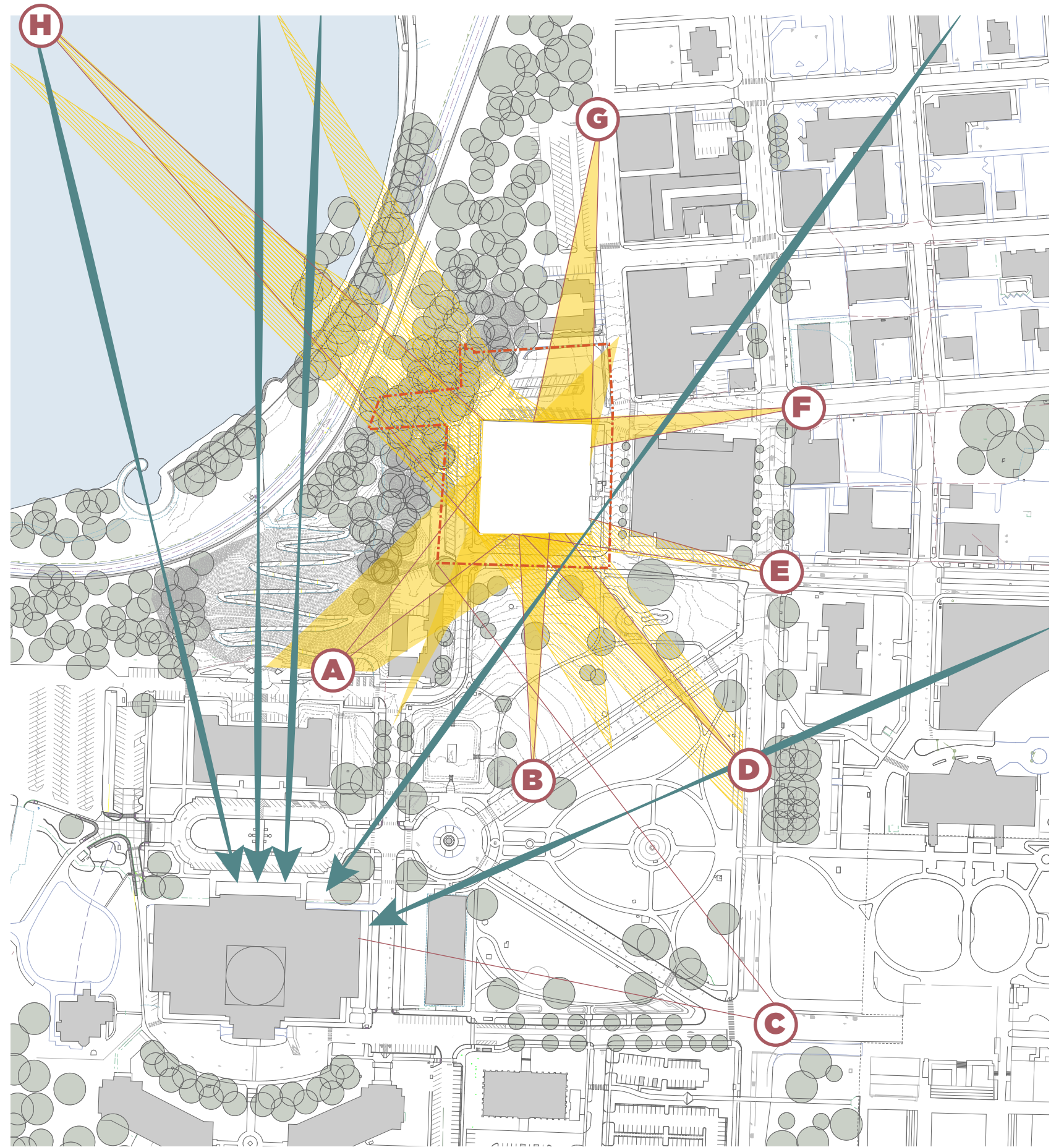
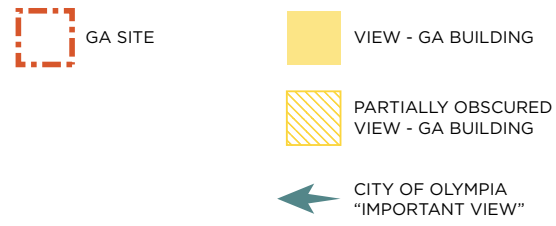
ONGOING PROJECTS - OPPORTUNITIES FOR SYNERGIES



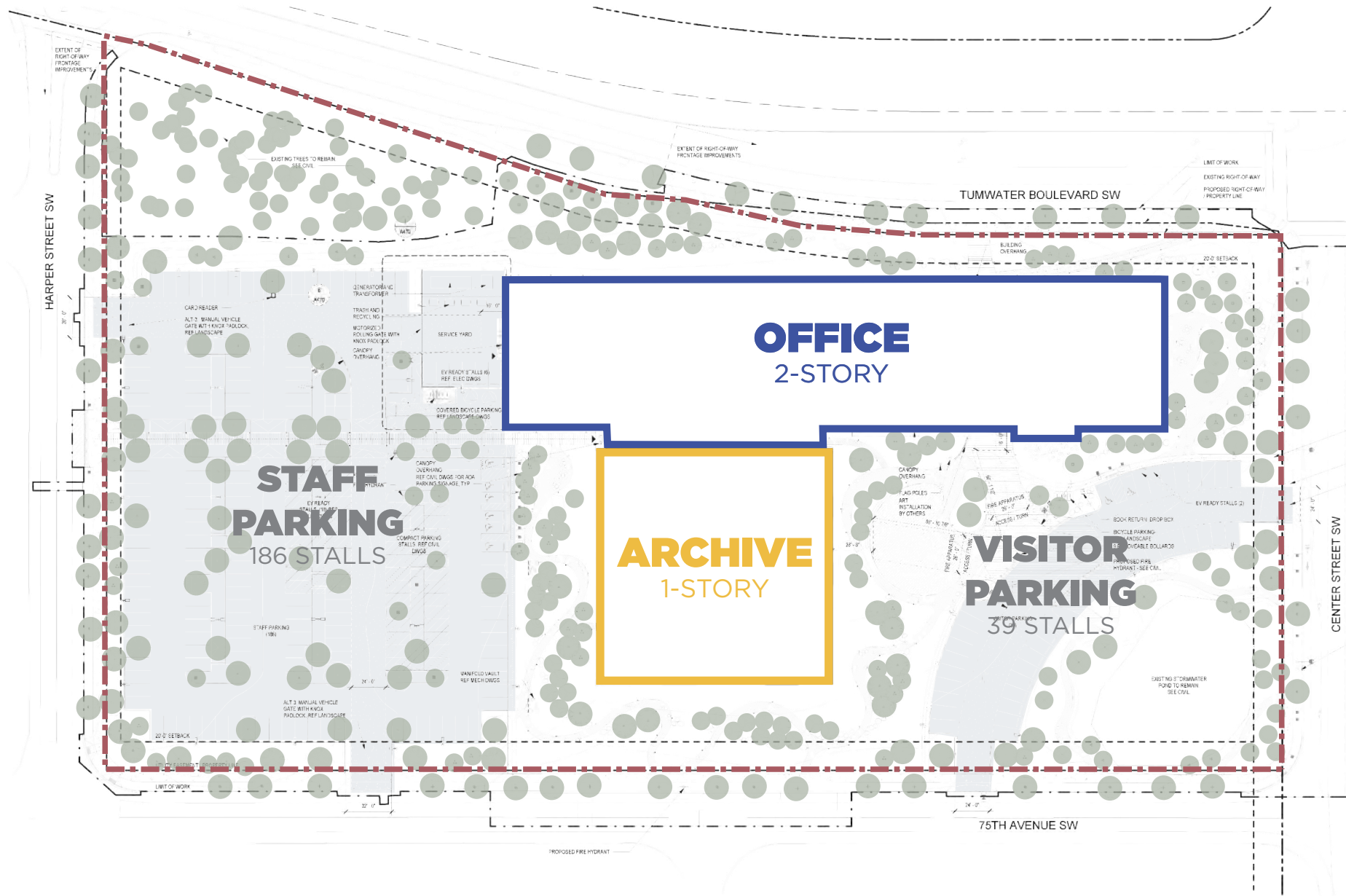
OR



FITTING INTO CAPITOL CAMPUS CONTEXT

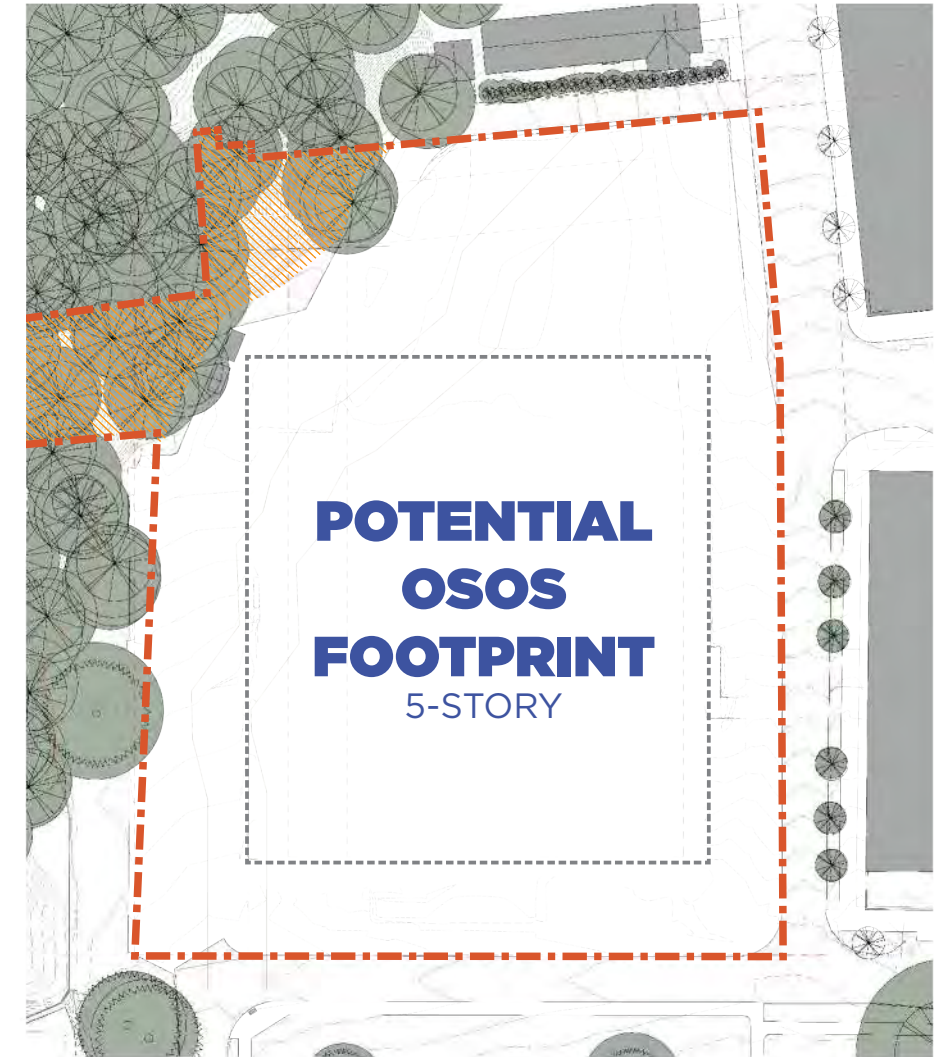


TUMWATER & CAPITOL CAMPUS SITE COMPARISON



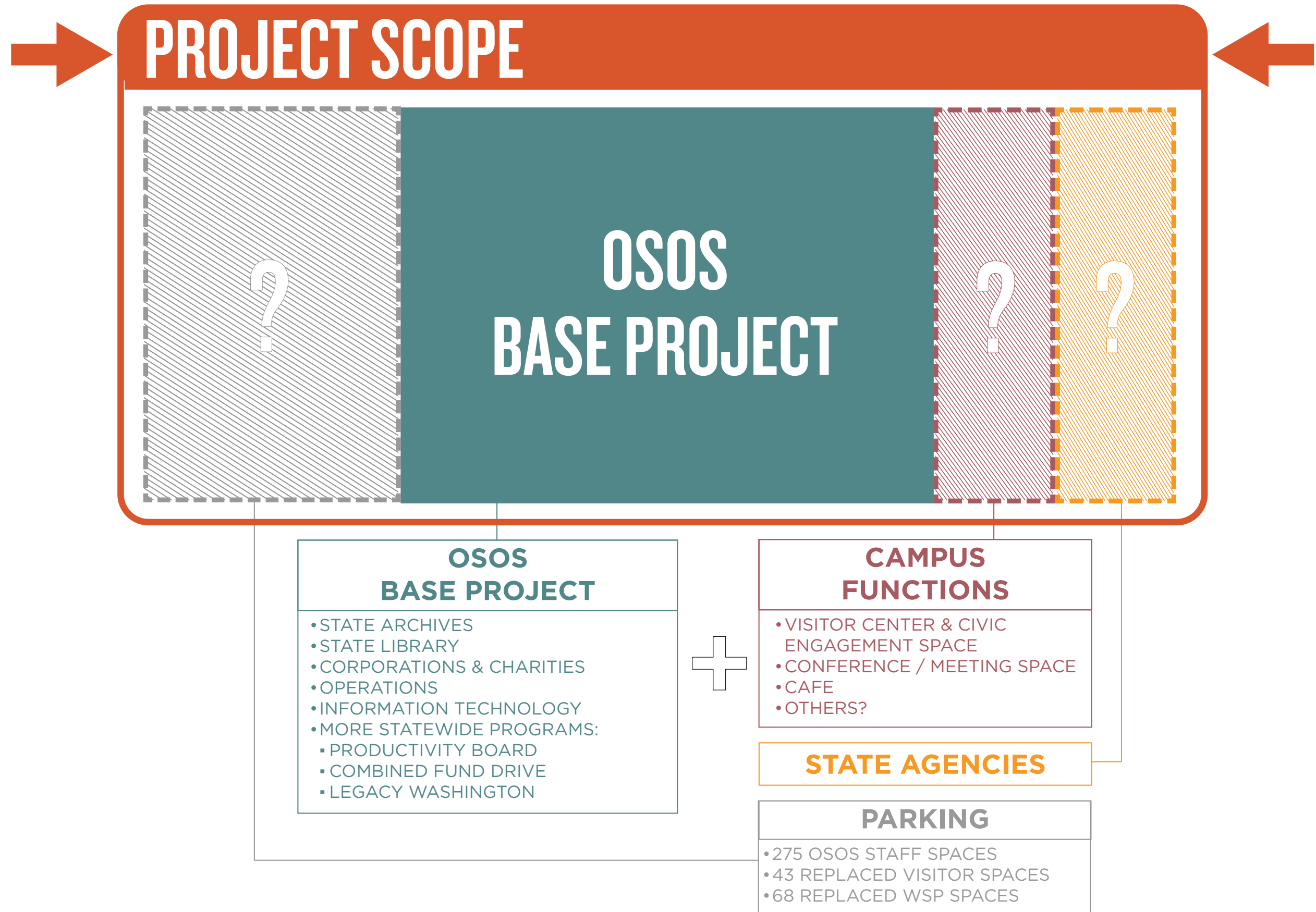
TUMWATER SITE
7.75 ACRES

SITE AREA ALLOWED FOR
“HORIZONTAL” SOLUTION



CAPITOL CAMPUS SITE
3.53 ACRES

SITE AREA DICTATES
“VERTICAL” OR “STACKED” SOLUTION

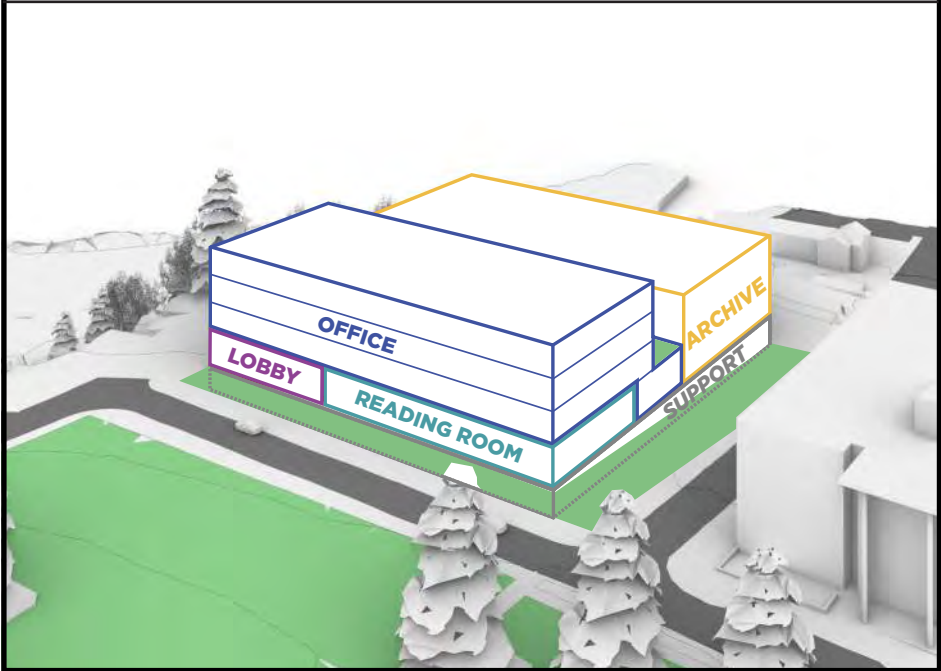


INITIAL CONCEPTUAL MASSING STUDIES

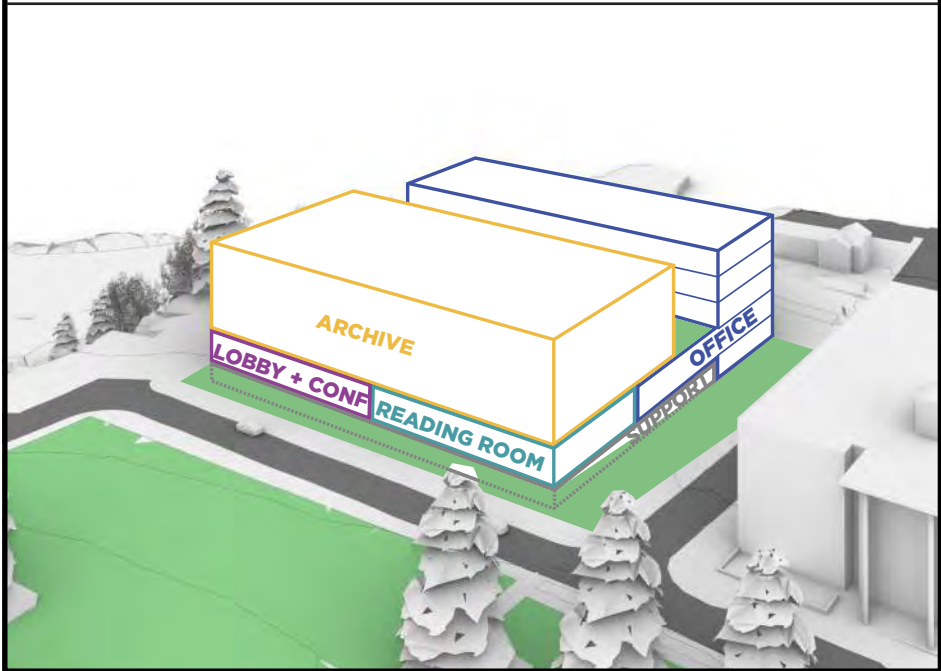
MASSING OPTION A
NORTH/SOUTH BARS - WRAPPED ARCHIVE



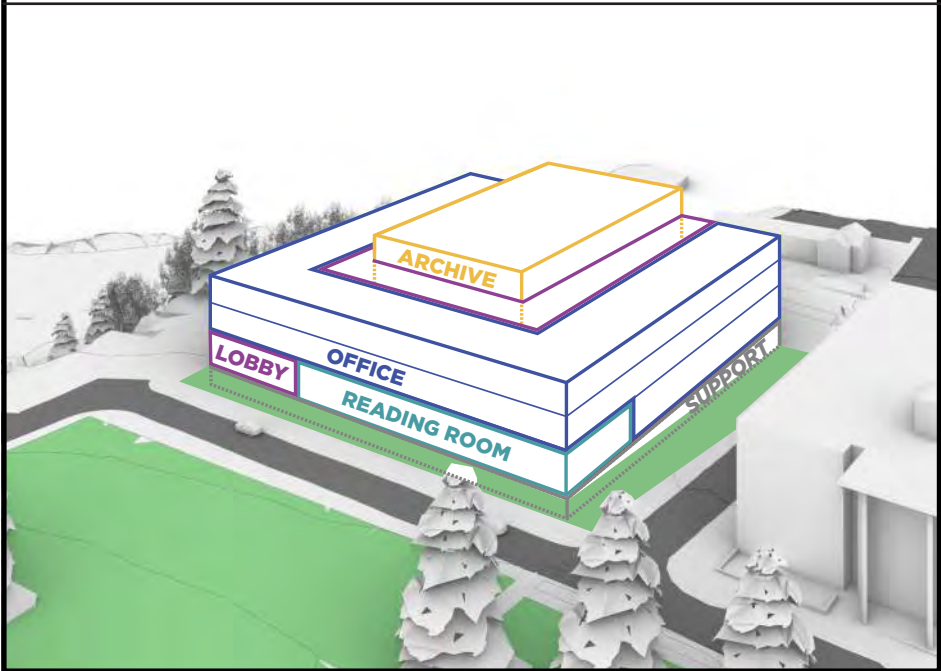
MASSING OPTION B
EAST/WEST BARS - GROUNDED ARCHIVE



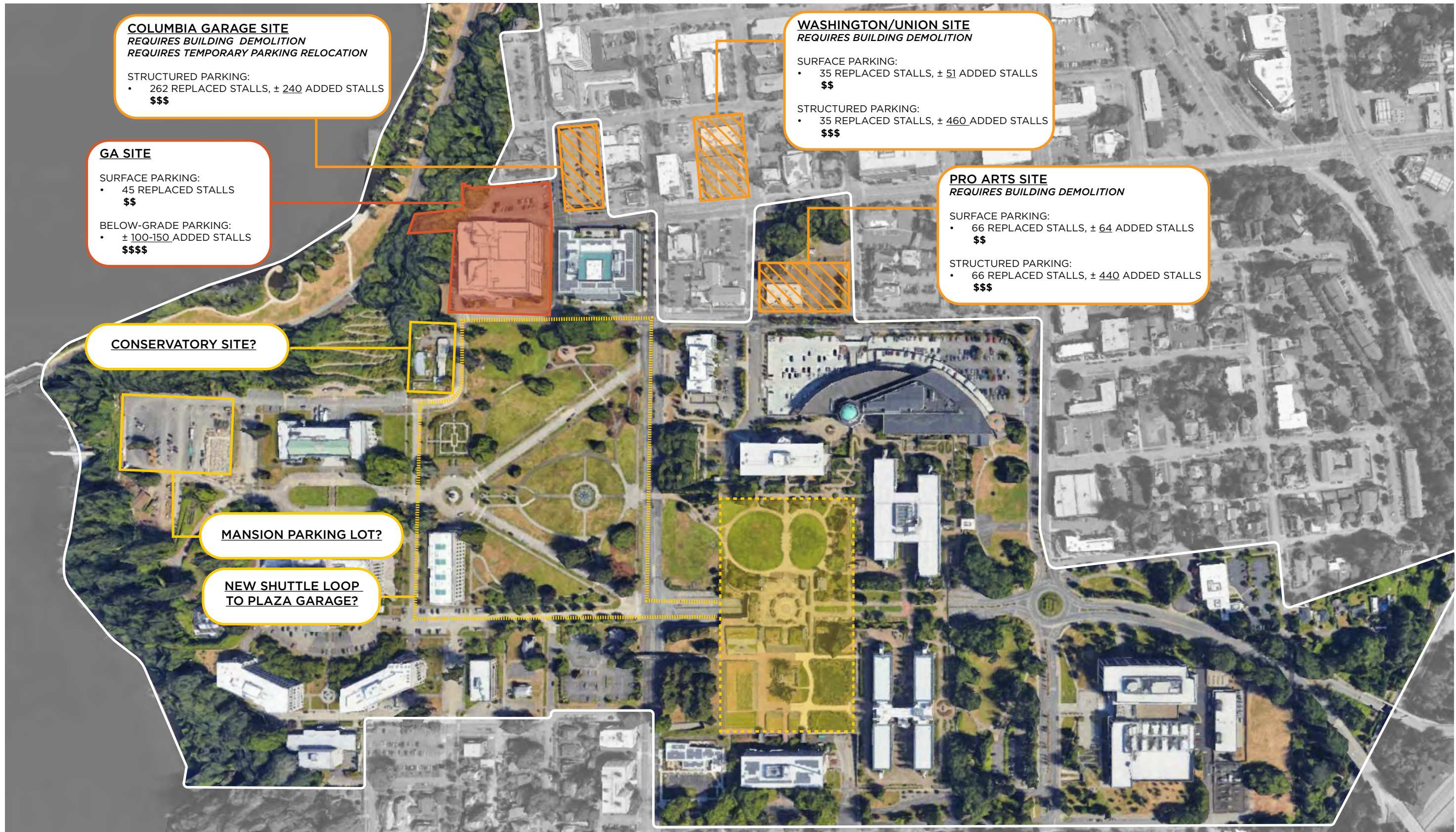
MASSING OPTION C
EAST/WEST BARS - FLOATING ARCHIVE



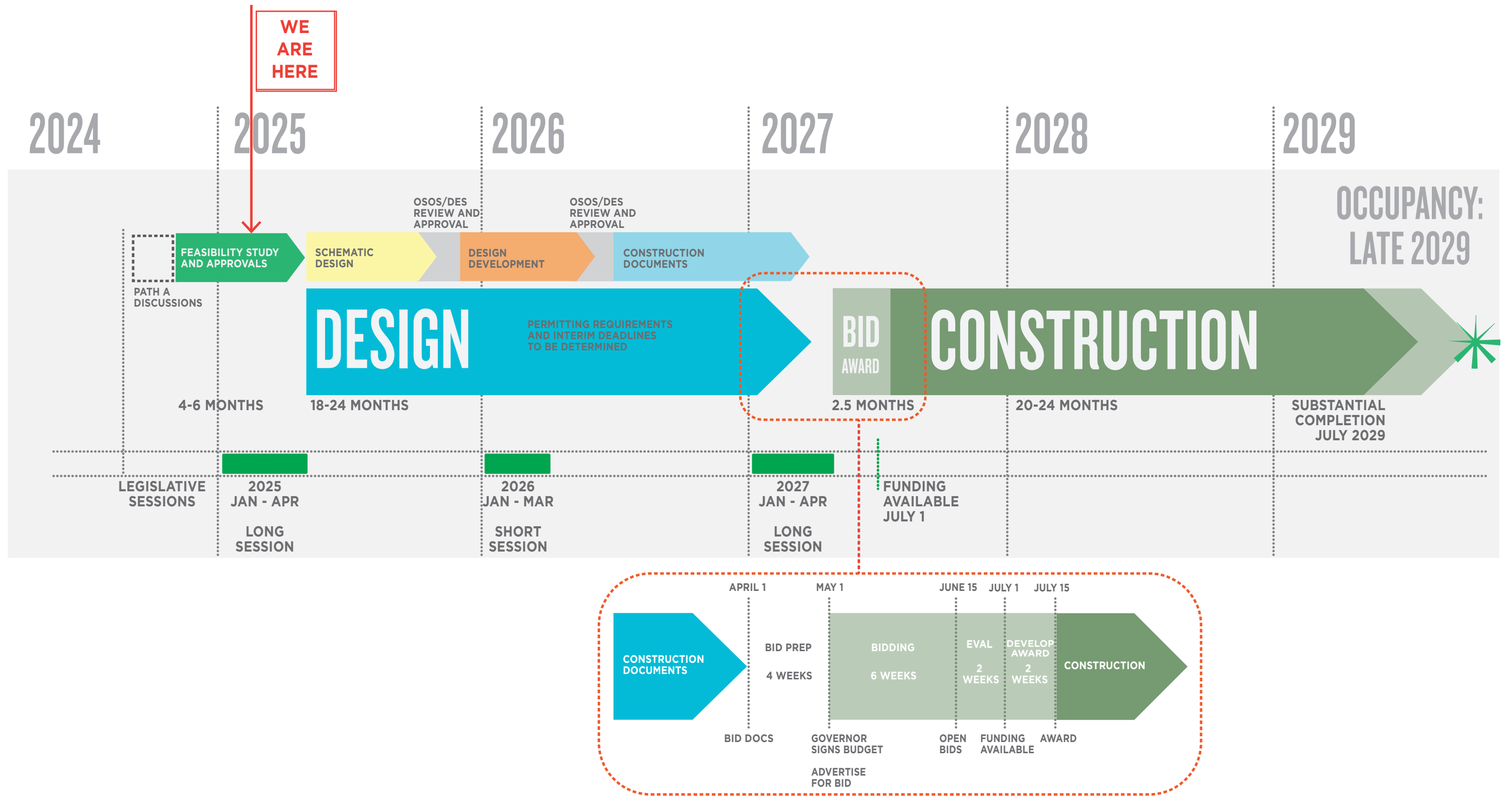
MASSING OPTION D
CENTRAL ARCHIVE



PARKING - CAPITOL CAMPUS OPPORTUNITIES



PROJECT PRELIMINARY SCHEDULE





The Library Archives Building will actively connect Washington State's citizens to the rich history and inclusive future of Washington State

by creating a transparent, accessible, and secure building that houses the current and future needs of the Office of the Secretary of State

so that the heritage of our past can be appropriately honored, and the future of our state can be responsibly guided, through a symbolically and functionally resilient facility.

An aerial photograph of the Washington State Capitol Campus. The central focus is the Washington State Capitol building, a large neoclassical structure with a prominent dome. Surrounding it are various other government buildings, green spaces, and parking lots. In the foreground, a large, irregularly shaped area is highlighted with a semi-transparent orange overlay, indicating a specific site of interest. The background shows a dense forest and a body of water on the right side.

A chance to revitalize a prime site with spectacular views on the Washington State Capitol Campus and design for its highest use

by integrating OSOS Olympia operations under one roof in a beautiful, modern, purpose-built facility

and create a visible, publicly accessible waypoint for Capitol Campus visitors to learn about our state's history and influence its future.



Washington State
**DEPARTMENT OF
ENTERPRISE SERVICES**

STATE CAPITOL COMMITTEE

*Lieutenant Governor Denny Heck (2025 Chair), Secretary of State Steve Hobbs (2025 Vice Chair),
Governor Ferguson's Designee Beau Perschbacher, Commissioner of Public Lands Dave Uptegrove's
Designee Katy Taylor*

AND

CAPITOL CAMPUS DESIGN ADVISORY COMMITTEE

*Jordan Kiel (2025 Chair, Architect-2), Kristin Glandon (2025 Vice Chair, Landscape Architect),
Secretary of State Steve Hobbs, Senator Phil Fortunato, Representative Beth Doglio, Representative Joel McEntire,
Alex Rolluda (Architect-1), Marc Daily (Urban Planner)*

JOINT SCC-CCDAC MEETING

FEBRUARY 27, 2025

(REMOTE ACCESS MEETING)

8 – Whitman Statue Relocation Update

INFORMATIONAL ITEM



Joint State Capitol Committee and Capitol Campus Design Advisory Committee

February 27, 2025

8A- Whitman Statue Relocation Update

Purpose: **Informational**

Sponsor(s): Washington State Department of Enterprise Services
Presenters: Linda Kent, DES Chief External Affairs Officer, linda.kent@des.wa.gov,
(360) 972-6413

Description:

During the 2021-2022 legislative session, the Legislature passed [ESHB 1372](#), which replaces the statue of Marcus Whitman in the National Statuary Hall in Washington D.C. with a statue of Nisqually Tribal member Billy Frank Jr., who dedicated his life to advocating for equality, justice and environmental protections. This change would also be reflected in the represented sculptures in Washington State Legislative Building. Subsequently, the Legislature also passed [2SHB 1639](#) during the 2023-2024 legislative session, making changes to the National Statuary Hall selection committee.

A study was conducted to analyze opportunity sites within the Legislative Building that may work for relocation of the statue. DES Staff will update the committee on the findings of the study.

Next Steps:

- Discussions will continue to take place regarding possible sites for Whitman statue.

Requested Action:

INFORMATIONAL ITEM - This is an informational item. No action by CCDAC is necessary.

List of Attachments:

8B- SCC-CCDAC Feb 27 2025- Whitman Statue Relocation Update PPT



Washington State
DEPARTMENT OF
ENTERPRISE SERVICES



Summary of Structural Analysis

Relocation of Whitman Statue

Capitol Campus Design Advisory Committee presentation

Feb. 27, 2025

1

Background



Marcus Whitman statue

- Current location: North entry of second floor

Billy Frank, Jr. statue

- New addition: Reflect state's contribution to National Statuary Hall

HB 1372 (2021) & SSHB 1639 (2023)

2

Relocation study



Location 1
Third floor
Outside Senate Chambers



Location 2
Third floor
Outside House Chambers



Location 3
South portico
Exterior existing slab

3

Study scope



Structural needs

- **Source:** Architectural and engineering records
- **Outside scope:** Physical boring, material testing, or study
- **Additional study:** Required for all options

4

Weight

Total weight: 9,144 - 14,382 pounds

Stone base: 6,394 pounds

Bronze statue: 2,750 - 7,988 pounds

Needs specialized equipment to move and support in place.



5

Height

Total height: 11.5 feet

Bronze statue: 9 feet

Stone base: 2.5 feet

Needs enough height to fit physically and with aesthetic scale.



6

Options 1 & 2: Third floor outside chambers



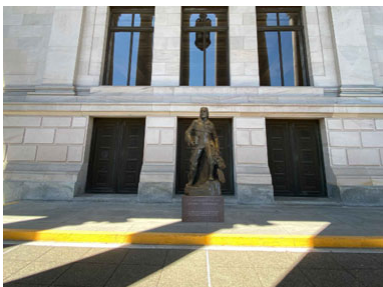
A. Center over steel girder



B. Locate within alcove

7

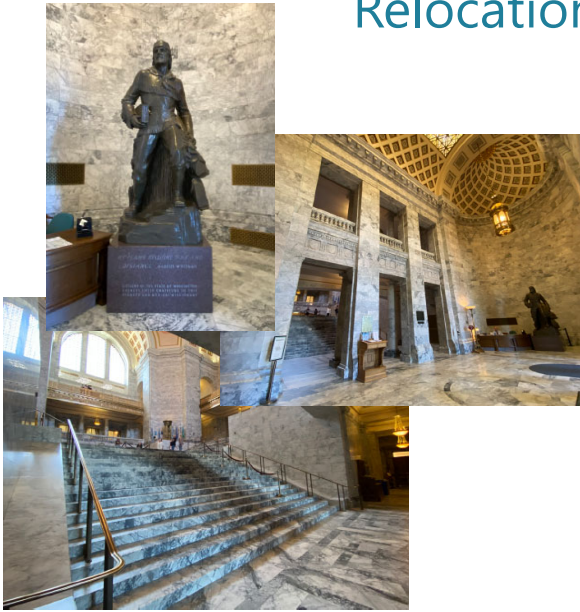
Option 3: South portico exterior



- ✓ **Height:** Open
- 🔔 **Weight:** Need to confirm steam tunnel location (surface-penetrating radar)
 - Offset statue to avoid tunnel
 - Place over load-bearing masonry wall
 - Reinforce tunnel to protect utilities
- 🔔 **Vandalism:** Security measures
- 🔔 **Environmental exposure:** Periodic waxing

8

Relocation methods



Options 1 & 2: Third floor

Determination: Not feasible

- Separating statue from base still too heavy
- No rigging points for scaffolding or ramps
- Cannot drill holes in historic materials
- Further study required for load capacity

Option 3: Exterior portico

Determination: Feasible

- Estimated relocation costs: \$115,000
- Radar recommended to confirm conditions: \$4,000

9

Report summary

Option	Height	Weight	Relocation	Other considerations
Options 1A & 2A	✓	Moderate work required	Not feasible	Trip hazard Security risk Historic lines
Options 1B & 2B	✓	Significant work required	Not feasible	N/A
✓ Option 3A – if grade	✓	✓	Feasible: \$115,000 (pending radar)	Vandalism Environmental exposure
✓ Option 3B – if steam tunnel	✓	Work required	Feasible: \$115,000 (pending radar)	Vandalism Environmental exposure

Full study: <http://bit.ly/41rl6wo>

10

Thank you

Contact

Department of Enterprise Services
External Affairs
SCC-CDDACPublicComments@des.wa.gov



des.wa.gov



Washington State
**DEPARTMENT OF
ENTERPRISE SERVICES**

STATE CAPITOL COMMITTEE

*Lieutenant Governor Denny Heck (2025 Chair), Secretary of State Steve Hobbs (2025 Vice Chair),
Governor Ferguson's Designee Beau Perschbacher, Commissioner of Public Lands Dave Uptegrove's
Designee Katy Taylor*

AND

CAPITOL CAMPUS DESIGN ADVISORY COMMITTEE

*Jordan Kiel (2025 Chair, Architect-2), Kristin Glandon (2025 Vice Chair, Landscape Architect),
Secretary of State Steve Hobbs, Senator Phil Fortunato, Representative Beth Doglio, Representative Joel McEntire,
Alex Rolluda (Architect-1), Marc Daily (Urban Planner)*

JOINT SCC-CCDAC MEETING

FEBRUARY 27, 2025

(REMOTE ACCESS MEETING)

9 – Legislative Campus Modernization Project - Update

INFORMATIONAL ITEM



Joint State Capitol Committee and Capitol Campus Design Advisory Committee

February 27, 2025

9A- Legislative Campus Modernization Project - Update

Purpose: **Informational**

Sponsor(s): Bill Frare, DES FPS Assistant Director
Presenters: Wesley Kirkman, LCM Project Director
Sidney Hunt, Project Manager
Katy Stark, Project Manager

Description:

Since the last CCDAC meeting, the following has been accomplished on the Legislative Campus Modernization project:

- Newhouse
 - Reached substantial completion and staff were moved in.
 - Held a successful grand opening ceremony.
 - Punchlist and minor corrections underway.
- Pritchard
 - Site excavation and footings construction 50% complete.
 - Structural steel underway.

Next Steps:

- Newhouse
 - Complete punchlist.
 - Begin closeout process.
- Pritchard
 - Complete footings construction by Mar.
 - Complete structural steel by June.

Requested Action:

INFORMATIONAL ITEM - This is an informational item. No action by CCDAC is requested.

List of Attachments:

9B- SCC-CCDAC Feb 27 2025- LCM Project Update PPT

LEGISLATIVE CAMPUS MODERNIZATION UPDATE


Capitol Campus Design Advisory Committee Presentation

February 27, 2025



(updates as of 1/31/2025)

1



**Washington State
CAPITOL CAMPUS**

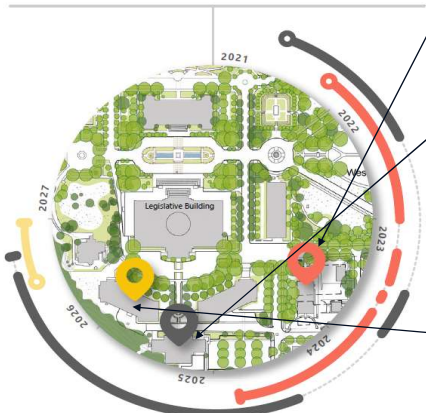
Legislative Campus Modernization

The Legislature directed Department of Enterprise Services (DES) to manage work for Legislative Campus Modernization (LCM) over the next several years on a portion of the historic West Capitol Campus. A series of projects will address serious life-safety issues with the buildings, overcrowding, and access for legislative agencies and the public while upgrading existing building systems and making Newhouse and Pritchard high performance, net-zero-ready facilities in keeping with State of Washington Executive Order 19-01.

Newhouse Building Replacement

- Substantial completion Nov. 15
- Move in completed Dec.
- Punchlist underway.

<p>2021 - 2024</p> <p>Newhouse</p> <p>December 2021 - December 2022 Newhouse design</p> <p>January - April 2023 Deconstruction of Newhouse & Press Houses</p> <p>May 2023 Demolition of Newhouse & Press Houses</p> <p>June 2023 - November 2024 New building construction</p> <p>NOVEMBER 2024 Estimated substantial completion</p>	<p>Pritchard</p> <p>April 2021 - April 2022 Preservation & validation study</p> <p>April - July 2023 New design</p> <p>March 2024 - July 2026 Construction</p> <p>AUGUST 2026 Estimated substantial completion</p>	<p>O'Brien</p> <p>mid-2026 - late 2026</p> <p>2026 Design</p> <p>2026 Construction</p> <p>Timeline subject to change</p>
---	--	---



Pritchard Expansion/Renovation

- Footings and site work 50% complete.
- Structural steel underway.

O'Brien Renovation

- Begin after 2026 session.

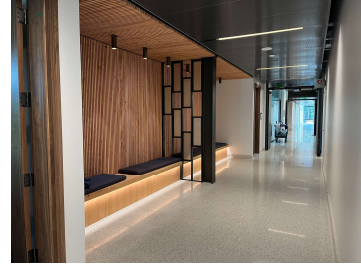
(updates as of 1/31/2025)

2

NEWHOUSE REPLACEMENT PROJECT



(updates as of 1/31/2025)



3

PRITCHARD EXPANSION AND RENOVATION PROJECT



(updates as of 1/31/2025)

4

QUESTIONS OR COMMENTS?

THANK YOU!



DesLCM@des.wa.gov

(updates as of 1/31/2025)



Subscribe for updates
<https://bit.ly/43Htc2Q>



www.des.wa.gov



Washington State
**DEPARTMENT OF
ENTERPRISE SERVICES**

STATE CAPITOL COMMITTEE

*Lieutenant Governor Denny Heck (2025 Chair), Secretary of State Steve Hobbs (2025 Vice Chair),
Governor Ferguson's Designee Beau Perschbacher, Commissioner of Public Lands Dave Uptbegrove's
Designee Katy Taylor*

AND

CAPITOL CAMPUS DESIGN ADVISORY COMMITTEE

*Jordan Kiel (2025 Chair, Architect-2), Kristin Glandon (2025 Vice Chair, Landscape Architect),
Secretary of State Steve Hobbs, Senator Phil Fortunato, Representative Beth Doglio, Representative Joel McEntire,
Alex Rolluda (Architect-1), Marc Daily (Urban Planner)*

JOINT SCC-CCDAC MEETING

FEBRUARY 27, 2025

(REMOTE ACCESS MEETING)

10- Future Announcements and Adjournment of Meeting

The Next Regularly Scheduled Meeting Calendar and up-to-date information may be found on the State Capitol Committee (SCC) and Capitol Campus Design Advisory Committee (CCDAC) websites.

These meetings may be held via remote access or “in-person.”

Future agendas, past minutes, and meeting materials will be posted to these websites as they become available.

THANK YOU FOR PARTICIPATING IN TODAY'S MEETING!