



Washington State  
**DEPARTMENT OF  
ENTERPRISE SERVICES**

## **State Capitol Committee**

*Lieutenant Governor Denny Heck (2024 Chair), Secretary of State Steve Hobbs (2024 Vice Chair),  
Governor Inslee's designee Kelly Wicker, Commissioner of Public Lands Hilary Franz's designee Katy Taylor*

### **HYBRID ACCESS MEETING**

PLEASE ACCESS THE MEETING VIA THE FOLLOWING LINK:

<https://des-wa.zoom.us/j/92745003874?pwd=QyLdOa85aC9CrcMKKIolno2XdiKuoy.1>

Passcode: 162188

**SEPTEMBER 19, 2024**

**State Capitol Committee  
Agenda for Meeting, September 19, 2024**

<b>Time</b>	<b>Agenda Items</b>	<b>Presenter</b>	<b>Desired Outcome</b>
10:00	1- Call Meeting to Order	Lt. Gov Denny Heck (SCC Chair)	
10:05	2- Approval of Minutes	Lt. Gov Denny Heck (SCC Chair)	<b>Decisional</b> - Review and approval of minutes for SCC June 27, 2024 meeting.
10:10	3- Public Comment Period	Chris Ferguson, Enterprise Services	<b>Informational</b> - DES will summarize any public comments received.
10:30	4- Visit Capitol Campus website launch	Niquette Kelcher, Enterprise Services	<b>Informational</b> - DES will provide a look at the new visit Capitol Campus webpage
10:35	5- Statue/Artwork removal process	Linda Kent, Enterprise Services	<b>Decisional</b> - SCC may approve the proposed process to remove statues/artwork on the Capitol Campus.
10:40	6- FPS Overview <ul style="list-style-type: none"> <li>• Capital Projects Overview</li> <li>• 2025-27 Capital project priorities</li> <li>• LCM</li> <li>• General Administration</li> </ul>	Department of Enterprise Services Staff	<b>Informational</b> - DES will provide a status update on happenings within Facility Professional Services.
11:10	7- Buildings and Grounds Overview <ul style="list-style-type: none"> <li>• Olmsted plaque</li> <li>• Big Belly Trash Cans</li> <li>• Marathon Trials Signage</li> </ul>	Department of Enterprise Services Staff	<b>Informational</b> - DES will provide a status update on happenings within Buildings and Grounds.
11:30	8- Campus Memorials update <ul style="list-style-type: none"> <li>• Cal Anderson Memorial</li> <li>• Fallen Firefighter Memorial</li> </ul>	Aaron Luoma, HBB Seattle  DNR/WSCFF Staff	<b>Informational</b> - DES will provide status updates on two memorials funded by the Legislature.
12:00	9- Future Announcements and Adjournment of Meeting	Lt. Gov Denny Heck (SCC Chair)	

**Upcoming Committee Meetings Schedule:**

Next CCDAC Meeting (2024 Qtr4):  
Next SCC Meeting (2024 Qtr4):

Thursday, November 14, 2024; 10AM  
Thursday, December 12, 2024; 10AM



Washington State  
**DEPARTMENT OF  
ENTERPRISE SERVICES**

## **STATE CAPITOL COMMITTEE**

*Lieutenant Governor Denny Heck, Secretary of State Steve Hobbs,  
Governor Inslee's Designee Kelly Wicker, and Commissioner of Public Lands Hilary Franz's designee Katy Taylor*

**SEPTEMBER 19, 2024**

(HYBRID ACCESS MEETING)

### **2- Approval of Meeting Minutes**

Draft minutes for the SCC June 27, 2024 meeting  
were provided in today's meeting packets.

**STATE CAPITOL COMMITTEE**  
**Hybrid/Remote Meeting**

**Thursday, June 27, 2024**  
**10:00 a.m.**

**Draft Minutes**

---

**SCC MEMBERS PRESENT:**

Randy Bolerjack (Vice Chair & Designee for Secretary of State Steve Hobbs)  
Pat Sullivan, Governor Inslee's Designee (Alternate)  
Katy Taylor, (Designee for Commissioner of Public Lands Hilary Franz)

**OTHERS PRESENT:**

Sarah Bannister, Legislature (Senate)  
Cynthia Barrett, Department of Enterprise Services  
Brent Chapman, Department of Enterprise Services  
Chris Ferguson, Department of Enterprise Services  
Valerie Gow, Puget Sound Meeting Services  
Greg Griffith, Olympia Historical Society  
Linda Kent, Department of Enterprise Services  
Wesley Kirkman, Department of Enterprise Services

**SCC MEMBERS EXCUSED:**

Lieutenant Governor Denny Heck, Chair

Nouk Leap, Department of Enterprise Services  
John Lyons, Department of Enterprise Services  
Jeff MacDonald, Department of Enterprise Services  
Patrick McDonald, Office of the Secretary of State  
Kyle Overmiller, Washington State Legislature  
Colleen Pehar, Legislature (Senate)  
Maurice Perigo, Department of Enterprise Services  
Ginny Streeter, Department of Enterprise Services  
Sarah Swift-Haggerty, Lieutenant Governor's Office

**Call Meeting to Order - Action**

Vice Chair Randy Bolerjack called the State Capitol Committee (SCC) hybrid/remote meeting to order at 10:02 a.m. and welcomed members, staff, and guests to the meeting.

Members and staff provided self-introduction.

Vice Chair Randy Bolerjack reviewed the agenda to approve the April 22, 2024 meeting minutes; receive public comments; and receive an informational update on the Statue/Memorial Removal Process.

**Approval of Minutes of April 22, 2024 Meeting – Action**

*Pat Sullivan moved, seconded by Katy Taylor, to approve the April 22, 2024 meeting minutes as published. A voice vote unanimously approved the motion.*

**Public Comment – Information**

Department of Enterprise Services (DES) External Affairs Coordinator Chris Ferguson described the process for attendees to sign up and provide public comment. Each person's testimony is limited to two minutes.

Mr. Ferguson noted that DES received one written public comment during the advance public comment period. The comment was from an individual who is a member of a union currently in contract negotiations with the state to achieve more equity and pay. The individual works as a grounds and nursery specialist for DES and submitted comments as a representative of the union.

There were no other public comments.



**Statue/Memorial Removal Process – Information**

Linda Kent, Chief External Affairs Officer, DES, reported the proposal is to develop a process to utilize when direction is received from the Legislature to remove a statue or work of art from the campus. The intent is to create a clear process for the removal of items through decisions rendered by recommendations from the Capitol Campus Design Review Committee (CCDAC) and decisions by the SCC. Staff identified a lack of process when the Whitman Statue was designated for removal from the Legislative Building. Since then, staff received notification that the statue would remain in the building, as the Legislature does not direct the removal of the statue when DES receives the Willy Frank Jr. statue. Statues in the Legislative Building second floor mirror those in the U.S. Capitol Building Statutory Hall in Washington, D.C. As the Whitman statue will remain in the Legislative Building, the proposed process would not be used to address the disposition of the Whitman statue. Instead, in this particular circumstance, the focus will be on logistics and site considerations. Staff engaged a consultant for an analysis of opportunity sites for the Whitman statue within the building. A recommendation will be presented to the committee at its next meeting.

Staff is however, recommending creation of a process for future use to eliminate any gaps that were identified surrounding the Whitman statue because a process is lacking for items removed from the campus. The RCWs and WACs do not address removal and disposition of statues and works of art from the campus and no formal process exists.

Actions to date by staff to develop a process included engagement with Washington State Arts Commission (ArtsWA), Department of Archaeology and Historic Preservation (DAHP), and Washington State Historical Society (WSHS) to vet a draft proposed process. The first step of the proposed process is convening a core group (ArtsWA, WSHS, and DAHP), the original artist (if available), and other key stakeholders recommended by core members to identify and prioritize relocation sites for items removed from the campus. The group would establish objectives and criteria potential sites should meet, identify potential relocation sites, measure the sites against the objectives and criteria, and develop a prioritized list of options for review and decision by CCDAC and SCC. Prior to the SCC rendering a decision, DES would publish a broad public notice advising the public about the prioritized list, criteria and objectives, and the comment deadline.

The proposed process aligns with existing SCC and CCDAC processes and includes a public comment period so there is public awareness of the proposal and an opportunity to submit comments as CCDAC and SCC consider a decision.

Ms. Taylor commented that storage as a last option might not be the last option but rather the preferred option dependent on circumstances. She questioned the phrasing of the option and suggested rephrasing the option as storage as a possible option rather than as the last resort as it might be a preferred option based on the objectives and criteria. Ms. Kent acknowledged the suggestion reflects less prescriptive language and provides more flexibility. Staff will revise the proposal and incorporate the recommendation when the proposal is presented to CCDAC for its recommendation to SCC.

Vice Chair Randy Bolerjack asked about the durability of the SCC's decision with respect to any statues or works of art when a recommendation is forwarded to the Legislature. Ms. Kent explained that the proposed process is essentially confined to the boundaries of informing CCDAC and SCC decisions. The SCC's decision to the Legislature is another step in the process with the Legislature rendering the final decision.

Mr. Ferguson advised that no member of the public has signed up to provide public comment at this time.

**Future Announcements and Adjournment of Meeting – Action**

Vice Chair Randy Bolerjack reported information on upcoming meetings for the SCC and the CCDAC are located on the DES website for each committee. The website includes up-to-date meeting information including meeting dates and times. DES publishes meeting agendas, minutes, and meeting packets on the website for each committee as they become available. The next CCDAC meeting is scheduled for Thursday, August 15, 2024 at 10 a.m. and the next SCC meeting is scheduled for Thursday, September 19, 2024 at 10 a.m. Future meetings will be remote/hybrid meetings.

**With there being no further business, Vice Chair Randy Bolerjack adjourned the meeting at 10:19 a.m.**

Prepared by Valerie L. Gow, Recording Secretary/President  
Puget Sound Meeting Services, [psmsoly@earthlink.net](mailto:psmsoly@earthlink.net)

DRAFT



## STATE CAPITOL COMMITTEE

*Lieutenant Governor Denny Heck, Secretary of State Steve Hobbs,  
Governor Inslee's Designee Kelly Wicker, and Commissioner of Public Lands Hilary Franz's designee Katy Taylor*

**SEPTEMBER 19, 2024**

(HYBRID ACCESS MEETING)

### **3- Public Comment Period**

#### **Instructions for Public Testimony at Meeting:**

1. A dedicated time of up to 20 minutes as Public Comment Period for items listed on today's meeting agenda.
2. Individuals may provide verbal testimony for up to 2 minutes at the sole discretion of the SCC Chair.
3. Individuals requesting to provide testimony are requested to **Type their first and last name using the Q&A function within the Zoom Webinar or sign in if in person.**
4. SCC Chair will recognize individuals by name using the list provided in the Zoom Webinar Q&A feature.
5. DES Staff will request the recognized individual to act and "unmute" their own microphone using Zoom features.
6. Failure by a recognized individual to "unmute" their microphone in a timely manner may forfeit opportunity to provide testimony. Forfeiture will be the discretion of the SCC Chair.
7. Following completion of an individual's testimony, DES staff will "Mute" (or turn off) the individual's microphone for the duration of the SCC meeting.

*NOTE: The SCC Chair reserves the right to end the public comment period of any individual for repetitive remarks or testimony that is unrelated to the agenda or matters before SCC; or further, the SCC Chair may reduce the limit or close the public comment period based on the total number of requests, content of testimony received, or time remaining for the Public Comment Period.*

**DES** Washington State  
DEPARTMENT OF  
ENTERPRISE SERVICES

# Public Comment Period

Chris Ferguson, External Affairs Coordinator

## External Affairs

SEPTEMBER 2024

1

## PUBLIC COMMENT PERIOD INSTRUCTIONS

**Please find the below steps to participate during the public comment period:**

- To request an opportunity to speak, please type your first and last name in the Q&A section of the Zoom webinar or raise your hand if in person.
- DES Staff will let the SCC chair know who has signed up for public testimony.
- DES Staff will allow the individual to speak and ask that they unmute their mic to do so.
- Failure to unmute may forfeit the individual's opportunity to speak. Forfeiture will be at discretion of the SCC chair.
- Individuals will be given 2 minutes to provide public testimony
- **Please note:** If you submitted written testimony via email, your letter was distributed and please only summarize your comments.

2

# THANK YOU



SCC-  
CDDACPublicComments  
@des.wa.gov



(360)790-7758



Des.wa.gov



Washington State  
**DEPARTMENT OF  
ENTERPRISE SERVICES**

## **State Capitol Campus Committee**

*Lieutenant Governor Denny Heck, Secretary of State Steve Hobbs,  
Governor Inslee's Designee Kelly Wicker, and Commissioner of Public Lands Hilary Franz's designee Katy Taylor*

**SEPTEMBER 19, 2024**

(HYBRID ACCESS MEETING)

**4 – Visit Capitol Campus Website Launch**

**INFORMATIONAL ITEM**



## State Capitol Campus Committee

September 19, 2024

### **4- Visit Capitol Campus Website Launch**

Purpose: **Informational**

Sponsor(s): Washington State Department of Enterprise Services  
Presenters: Niquette Kelcher, Digital and Creative Services Director,  
[Niquette.Kelcher@des.wa.gov](mailto:Niquette.Kelcher@des.wa.gov), (360)701-9192

#### **Description:**

The Department of Enterprise Services (DES) has launched a brand new website that showcases all that makes the Capitol a standout in the nation.

The new site (<https://capitol.wa.gov/>) makes it easy for people to discover, explore, request event space, and plan their visit to the beautiful and historic Capitol Campus. Highlighting the beauty of the campus and its role as a center of civic engagement, the website features the campus' artwork, memorials and monuments, trees, parks and gardens, and provides visitor information about parking and tours.

The new [Capitol Campus](#) website was announced broadly to the public and stakeholders on July 29<sup>th</sup>. Information for campus employees and tenant agencies remains on [des.wa.gov](https://des.wa.gov).

#### **Next Steps:**

- No additional next steps as website is currently active.

#### **Requested Action:**

##### **INFORMATIONAL ITEM**

This is an informational item. No action by SCC is necessary.

#### **List of Attachments:**

Attachment: No Attachments.



Washington State  
**DEPARTMENT OF  
ENTERPRISE SERVICES**

## **State Capitol Campus Committee**

*Lieutenant Governor Denny Heck, Secretary of State Steve Hobbs,  
Governor Inslee's Designee Kelly Wicker, and Commissioner of Public Lands Hilary Franz's designee Katy Taylor*

**SEPTEMBER 19, 2024**

(HYBRID ACCESS MEETING)

**5 – Statue/Artwork Removal Process**

**DECISIONAL ITEM**





## State Capitol Campus Committee

September 19, 2024

### **5- Statue/Artwork Removal Process**

Purpose: **Decisional**

Sponsor(s): Washington State Department of Enterprise Services  
Presenters: Linda Kent, Chief External Affairs Officer, (360)972-6413,  
[Linda.Kent@des.wa.gov](mailto:Linda.Kent@des.wa.gov)

#### **Description:**

During the 2021-2022 legislative session, the Legislature passed [ESHB 1372](#), which replaces the statue of Marcus Whitman in the National Statuary Hall in Washington D.C. with a statue of Nisqually Tribal member Billy Frank Jr., who dedicated his life to advocating for equality, justice and environmental protections. This change would also be reflected in the represented sculptures in Washington State Legislative Building. Subsequently, the Legislature also passed [2SHB 1639](#) during the 2023-2024 legislative session, making changes to the National Statuary Hall selection committee.

The Department of Enterprise Services (DES) in coordination with Department of Archaeology and Historic Preservation (DAHP), the Washington State Arts Commission (ArtsWA), and the Washington State Historical Society (WSHS), developed a draft process for removing statues and memorials from the Capitol Campus once directed to do so by the Legislature. The process includes assembling a core group from DAHP, ArtsWA, WSHS and the artist if available as well as other key stakeholders identified by the core group to develop a prioritized list of relocation options for CCDAC and SCC to evaluate. Once a process is approved, it will be used for the Whitman statue removal as well as for any future memorials or statues that DES is directed by the Legislature to remove from the Capitol Campus.

#### **Next Steps:**

- The proposed process will go before SCC at its 3<sup>rd</sup> quarter meeting as decisional.

#### **Requested Action:**

**DECISIONAL ITEM** – SCC may approve the recommended proposed process for the Department of Enterprise Services to use for future artwork removals.

*Move to recommend approval of the proposed process to remove Statues or Artwork from the Capitol Campus by DES.*

#### **List of Attachments:**

Attachment: 5B- Statue/Artwork removal process fact sheet, 5C- Statue/Artwork removal slide deck



# STATUE OR MEMORIAL

## REMOVAL PROCESS

UPDATED: 2024-06-13

### Purpose

Create a clear process for removing a statue or work of art from the Capitol Campus, once directed by the Legislature.

### Steps to put process in place

Engage stakeholders to vet proposed process:

1. Engage the Washington State Arts Commission (Arts WA), the WA State Historical Society, (WSHS) & Department of Archaeology and Historic Preservation (DAHP) to vet a draft process that can be carried forward if other items are removed or replaced in the future.
2. Vet the draft process with Capitol Campus Design Advisory Committee (CCDAC) and State Capitol Committee (SCC), during their second and third quarter meetings (proposed process needs to appear at each committee once as informational and a second time as decisional).

### Proposed process

This proposed process begins once direction is given by the Legislature to remove a memorial or work of art:

1. DES convenes core group (Arts WA, WSHS, DAHP, the original artist if available and per WAC 200-230-040 + other key stakeholders as recommended by the core group) to identify and prioritize relocation sites.
  - Core group duties:
    - Set key objectives and criteria that any relocation site should meet. Criteria will include basic logistical considerations (e.g., can a space accommodate the size of an item)
    - Identify potential relocation sites
    - Measure potential sites against key objectives and criteria

- Identify storage preferences as a last resort option
  - Prioritize the options for review and decision by CCDAC and SCC
2. The prioritized list is brought before CCDAC and SCC for public comment and approval.
- A) The list is presented to CCDAC as informational.
- B) The list is presented to SCC as informational.
- C) The list is presented a second time to CCDAC as a decisional agenda item for recommendation to the SCC. At this point:
- DES sends broad public notification of prioritized option(s) reviewed when the CCDAC agenda is published (2 weeks prior to meeting). The notice includes:
    - Information about the key objectives and criteria option(s) were measured against
    - The prioritized list
    - Comment Deadline
    - How to comment (Send public comments to [SCCCCDACPublicComments@des.wa.gov](mailto:SCCCCDACPublicComments@des.wa.gov) or provide testimony at CCDAC meeting during public comment period
  - CCDAC will consider the proposed prioritized list and option(s), including public comment, and share its recommendation to SCC.
- D) The approved prioritized list and option(s) are and CCDAC recommendation are presented to SCC as a decisional agenda item.
- DES sends broad public notification of prioritized option(s) reviewed when the SCC agenda is published (2 weeks prior to meeting). The notice includes:
    - Information about the key objectives and criteria option(s) were measured against
    - The prioritized list
    - Comment Deadline
    - How to comment (Send public comments to [SCCCCDACPublicComments@des.wa.gov](mailto:SCCCCDACPublicComments@des.wa.gov) or provide testimony at CCDAC meeting during public comment period
  - SCC considers CCDAC recommendation(s) and public comment.
  - SCC and DES Director share recommendation with the Legislature.
3. **Legislative Process (if needed)**

DES submits a capital budget request to the Legislature for the removal process, or for removal and installation if an item is being replaced, unless funds have already been authorized by the Legislature. The request would include design for the physical removal process by the Campus Conservator.



# Statue or work of art removal process

LINDA KENT, DES CHIEF EXTERNAL AFFAIRS OFFICER

*September 2024*

1

## PURPOSE

Create a clear process for removing a statue or work of art from the Capitol Campus, once directed by the Legislature.

2

## REGULATORY BACKGROUND

- Existing RCWs and WACs are silent on commemorative works removal process.
- No process exists.

3

## STEPS TO PUT PROCESS IN PLACE

1. Engaged Arts WA, State Historical Society, & Department of Archeology and Historic Preservation to vet a draft process that can be carried forward if other items are removed or replaced in the future.
2. Bring to CCDAC and SCC

4

## DRAFT PROCESS – STEP 1

1. DES convenes core group (Arts WA, Historical Society, DAHP, and per WAC 200-230-040 the original artist if available + other key stakeholders as recommended by the core group to identify and prioritize relocation sites.
  - Core group duties:
    - Set key objectives and criteria that any relocation site should meet. Criteria will include basic logistical considerations (e.g., can a space accommodate the size of an item)
    - Identify potential relocation sites
    - Measure potential sites against key objectives and criteria
    - Identify storage preferences as a last resort option
    - Prioritize the options for review and decision by CCDAC and SCC

5

## DRAFT PROCESS – STEP 2

The prioritized list is brought before CCDAC and SCC for public comment and approval.

1. The list is presented to CCDAC and SCC as informational.
2. The list is presented a second time to CCDAC and SCC as decisional.

**When presented as decisional, DES sends broad public notice which includes:**

- The prioritized list
- Information about the key objectives and criteria option(s) were measured against
- Comment Deadline and how to comment

6

# THANK YOU



[linda.kent@des.wa.gov](mailto:linda.kent@des.wa.gov)



360-972-6413



[des.wa.gov](http://des.wa.gov)





Washington State  
**DEPARTMENT OF  
ENTERPRISE SERVICES**

## **State Capitol Campus Committee**

*Lieutenant Governor Denny Heck, Secretary of State Steve Hobbs,  
Governor Inslee's Designee Kelly Wicker, and Commissioner of Public Lands Hilary Franz's designee Katy Taylor*

**SEPTEMBER 19, 2024**

(HYBRID ACCESS MEETING)

### **6 – Facility Professional Services Overview**

- A. Capital Projects Overview**
- B. 2025-27 Capital Project Priorities**
- C. Legislative Campus Modernization**
- D. General Administration Building**

**INFORMATIONAL ITEM**



## State Capitol Campus Committee

September 19, 2024

### **6A- Capital Projects Update**

Purpose: **Informational**

Sponsor(s): Bill Frare, FPS Assistant Director, and  
Oliver Wu, FPS Planning and Project Delivery Program Manager

Department(s): Department of Enterprise Services

Presenters: Oliver Wu, [oliver.wu@des.wa.gov](mailto:oliver.wu@des.wa.gov)

#### **Description:**

CCDAC has expressed interest in Enterprise Services providing routine status updates on several key capital improvement projects. The status and significant accomplishments are as follows for these key projects:

#### **2021-23 Capital Project Accomplishments:**

##### **L&I/WSDA Laboratory Health and Safety Training Center (18-057)**

- New laboratory facility for Labor & Industries
- Washington State Department of Agriculture is a co-tenant
- Pursuing Net-Zero Capable
- Substantial Completion was July 2023
- Currently installing a solar photovoltaic project

##### **Capitol Campus Child Care - Photovoltaic Panels (18-035)**

- Installed an 81kW solar photovoltaic system
- Net-Zero Capable facility
- Project was completed in September 2021

##### **Legislative Building Cleaning- John A. Cherberg Building**

- Cherberg Building cleaned in 2022
- Minor repairs to stone façade completed
- Window sealants were replaced
- Substantial Completion was September 2022

##### **Elevator Modernization Improvements**

- Elevators modernized and replaced:

- Capitol Court, Elevator #1
- Temple of Justice, Elevator #2
- Plaza Garage, Elevator #1
- Projects were completed in 2023

### **DAS Plaza Garage (18-725) & DAS NRB, DOT, Columbia Garages (20-271)**

- Installed new digital antenna systems within:
  - Plaza Garage
  - Department of Transportation Garage
  - Natural Resources Building Garage
  - Columbia Garage
- Substantial Completion was October 2023

### **Planned 2023-25 Capital Projects (Underway):**

#### **New Buildings & Grounds Maintenance Facility (24-015)**

- Selected Freiheit Architecture to complete design drawings by August 2024
- This project will construct a new maintenance facility for Buildings & Grounds
- Project delivery method is design-bid-build
- Project bidding is scheduled for September 2024
- Substantial completion is planned for August 2025

#### **Legislative Building – Restore Chamber Skylights (24-034)**

- Architectural Resources Group has been selected to complete design drawings by December 2024
- This project will remove the metal plates and restore the original skylights, bringing back the natural light into the Senate and House Chambers
- Project delivery method is design-bid-build
- Project bidding is scheduled for July 2025
- Substantial completion is planned for June 2027

#### **Elevator Modernization Improvements**

- Elevators to be modernized and replaced:
  - Temple of Justice, Elevator #1
  - Legislative Building, Elevator #5
  - Legislative Building, Elevator #6
  - Insurance Building, Elevator #1
- Design efforts have started with Stemper Architects the selected firm
- Design drawings to be completed by September 2024
- Construction for these projects have started as of June 2024 with the TOJ Elevator, with other construction starts occurring in November 2024
- Substantial Completion for these projects will vary and be completed in 2025

#### **Highway License Building – Critical Fire System Upgrades (24-019)**

- Selected Tres West Engineers to complete design drawings in April 2024
- This project will replace the Fire Alarm System in the Highway License Building
- Project delivery method is design-bid-build
- Project bid was complete in April 2024, and the selected firm is JA Morris Construction
- Substantial completion is planned for March 2025

#### **Legislative Building Cleaning – O'Brien Building (24-036)**

- Selected SHKS Architects to complete design drawings by September 2024

- This project will include the cleaning of the stone façade, window sealant replacement, and very minor stone repairs.
- Project delivery method is design-bid-build
- Project is delayed due to discovery of asbestos in window sealants and caulking
- Currently evaluating the mitigation strategy to incorporate into bid documents
- Substantial completion is planned for late 2025

#### **Old Capitol Building Roof Replacement (24-013)**

- Selected SHKS Architect to complete design drawings in September 2024
- This project will replace the roofing material and maintain historic character
- Project delivery method is design-bid-build
- Project bidding is scheduled for August 2025
- Substantial completion is planned for November 2026

#### **Modular Building Critical Repairs and Upgrades (24-024)**

- Selected Rolluda Architects to complete design drawings in December 2024
- This project will retrofit and rehabilitate the Tumwater Modular Building
- Project delivery method is design-bid-build
- Project bidding is scheduled for July 2025
- Substantial completion is planned for October 2026

#### **Capitol Campus Security & Safety Enhancements**

- These programmatic projects include the following security and safety projects:
  - Capitol Campus Door Access Control Exterior Improvements
  - Exec Residence - Fencing, Gates, and Bollards
  - Exec Residence - Video Surveillance and Lighting
  - Capitol campus Security Wedge Barrier - Water Street
- Design efforts took place between September 2021 and November 2022.
- Project delivery method is design-bid-build
- Construction of these projects have started in July 2023 and all projects will be complete by June 2025.

#### **Temple of Justice Systems Renewal and Updates (22-113)**

- This project includes improvements to the HVAC, plumbing, lighting and security systems.
- Construction began in April 2022, and will be complete by September 2024.

#### **DES 2023-25 Minor Works Projects**

- The following minor works are underway:
  - Legislative Building - Exterior Safety Railings
  - Temple of Justice - Exterior Safety Railings
  - Campus Signage and Wayfinding
  - Highway License Building – HVAC Recommissioning
  - Archives – Investigate & Repair Sewer Lines
  - Capitol Way Pedestrian Bridge Repair
  - Cherberg-O'Brien – Replace UST Monitor
  - Highway License Building -Plaza Garage – Replace Failed Tunnel Skylight
  - Legislative Building - Basement Water Infiltration
  - Dolliver - Replace Loading Dock Roof
  - Dolliver - Roof Fall Protection Upgrades
  - Powerhouse - Replace Sewer Main
- Projects are at various stages of design, bidding, and construction with anticipated completion by June 2025.

**Next Steps:**

Enterprise Services will provide project updates to CCDAC and SCC at future regularly scheduled meetings.

**Requested Action:**

This is an informational item. No action by SCC is necessary.

**List of Attachments:**

Attachment: 6AA: Capital Projects Update Presentation

# CAPITAL PROJECTS UPDATE

SCC Sept 19, 2024 Meeting  
Oliver Wu, PPD Program Manager  
Facility Professional Services



1

## CAPITAL PROJECT UPDATE

### **2021-23 Major Project Status and Closeouts**

- Reappropriated 2019-21 Capital Projects
- New Projects funded in 2021-23

### **2023-25 Agency Capital Projects**

- Major Works (>\$1M)
  - Preservation Projects
  - Programmatic Projects
- Reappropriated 2021-23 Capital Projects
- Minor Works (<\$1M)

2

# 2021-23 ACCOMPLISHMENTS

3

## 2021-23 ACCOMPLISHMENTS

### L&I/WSDA Lab Health & Safety Training Center (18-507)

- New laboratory facility for L&I
- WSDA is a co-tenant
- Pursuing Net-Zero Capable
- Substantial Completion was July 2023



### Capitol Campus Childcare Center Photovoltaics Panels (18-035)

- Installed 81kW photovoltaic system
- Net-Zero capable facility
- Project was completed in Sept 2021

4

## 2021-23 ACCOMPLISHMENTS

### Legislative Building Cleaning - Cherberg (22-114)

- Cherberg Building cleaned in 2022
- Minor repairs to stone façade completed
- Window sealants were replaced
- Substantial Completion was Sept 2022



### Elevator Modernizations (18-548)

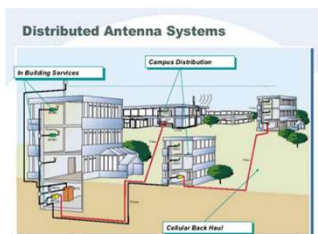
- Elevators modernized and replaced:
  - Capitol Court, Elevator #1
  - Temple of Justice, Elevator #2
  - Plaza Garage, Elevator #1
- Projects were completed in 2023

5

## 2021-23 ACCOMPLISHMENTS

### DAS Campus Garages (18-725 and 20-271)

- Installed new digital antenna systems within:
  - Plaza Garage
  - Department of Transportation Garage
  - Natural Resources Building Garage
  - Columbia Garage
- Substantial Completion was October 2023



6



# 2023-25 CAPITAL PROJECTS

7

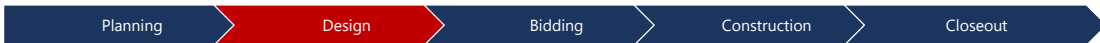
## CAPITAL PROJECT UPDATE

### Project Name:

New Building & Grounds Maintenance Facility (24-015)

### Key Milestones:

- Design Period: Jan 2024 - Aug 2024
- Bid Date: Sep 2024
- Construction Period: Oct 2024 - Aug 2025

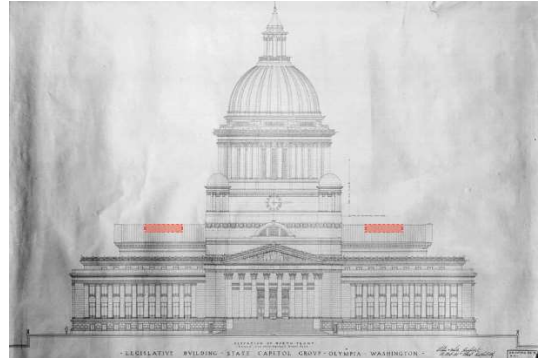


8

# CAPITAL PROJECT UPDATE

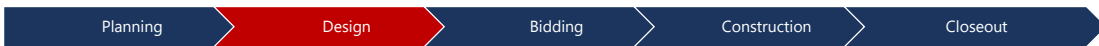
## Project Name:

Legislative Building - Restore Chamber Skylights (24-034)



## Key Milestones:

- Design Period: Dec 2023 – Dec 2024
- Bid Date: July 2025
- Construction Period: Sept 2025 – Jun 2027



9

# CAPITAL PROJECT UPDATE

## Project Name:

Elevator Modernization-Temple of Justice – Elevator #1 (24-040)



## Key Milestones:

- Design Period: Jun 2023 – May 2024
- Bid Date: May 2024
- Construction Period: Jun 2024 - Jun 2025



10

# CAPITAL PROJECT UPDATE

## Project Name:

Legislative Building – Elevator No. 5 (24-014)

## Key Milestones:

- Design Period: Dec 2023 - Sep 2024
- Bid Date: Oct 2024
- Construction Period: Nov 2024 - Sep 2025



11

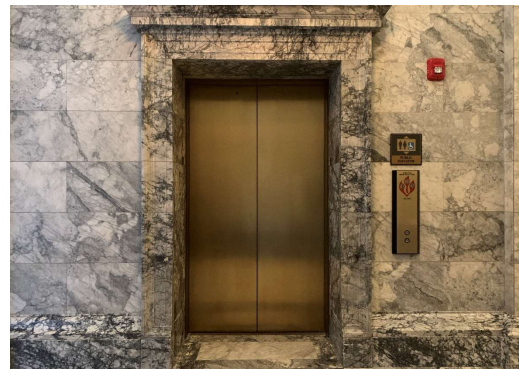
# CAPITAL PROJECT UPDATE

## Project Name:

Legislative Building – Elevator No. 6 (24-021)

## Key Milestones:

- Design Period: Dec 2023 - Sep 2024
- Bid Date: Oct 2024
- Construction Period: Nov 2024 -Nov 2025



12

# CAPITAL PROJECT UPDATE

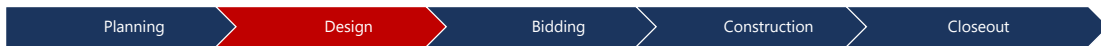
## Project Name:

Insurance Building Elevator No. 1  
Modernization Project (24-018)



## Key Milestones:

- Design Period: Feb 2024 - Sept 2024
- Bid Date: Oct 2024
- Construction Period: Jan 2025 - Apr 2025



13

# CAPITAL PROJECT UPDATE

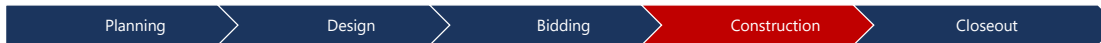
## Project Name:

Highway License Building - Critical Fire System  
Upgrades (24-019)



## Key Milestones:

- Design Period: Sep 2023- Apr 2024
- Bid Date: Apr 2024
- Construction Period: Jun 2024 - Mar 2025



14

# CAPITAL PROJECT UPDATE

## Project Name:

Legislative Building Cleaning - O'Brien Building (24-036)



## Key Milestones:

- Design Period: Oct 2023 – Sep 2024
- Bid Date: TBD
- Construction Period: TBD



15

# CAPITAL PROJECT UPDATE

## Project Name:

Old Capitol Building - Roof Replacement (24-013)



## Key Milestones:

- Design Period: Jan 2024 – May 2025
- Bid Date: Aug 2025
- Construction Period: Sep 2025 – Nov 2026



16

# CAPITAL PROJECT UPDATE

## Project Name:

Modular Building Critical Repairs and Upgrades (24-024)



## Key Milestones:

- Design Period: Mar 2024 - Dec 2024
- Bid Date: July 2025
- Construction Period: Aug 2025 – Oct 2026



17

# CAPITAL PROJECT UPDATE

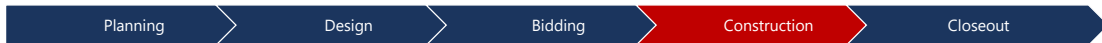
## Project Name:

Capitol Campus Door Access Control Exterior Improvements (22-155)



## Key Milestones:

- Design Period: Dec 2021 – Jun 2022
- Bid Date: Oct 2022
- Construction Period: Jul 2023 – Sep 2024



18

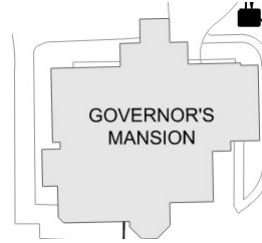
# CAPITAL PROJECT UPDATE

## Project Name:

Executive Residence - Fencing, Gates, and Bollards (22-160)

## Key Milestones:

- Design Period: Jan 2022 – Nov 2022
- Bid Date: July 2024
- Construction Period: TBD



19

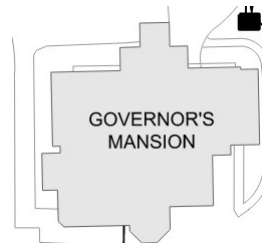
# CAPITAL PROJECT UPDATE

## Project Name:

Executive Residence  
- Video Surveillance and Lighting (22-152)

## Key Milestones:

- Design Period: Jan 2022 – Nov 2022
- Bid Date: July 2024
- Construction Period: Sep 2024 – July 2025



20



## CAPITAL PROJECT UPDATE

### Project Name:

Capitol Campus Security- Wedge Barrier (22-105)

### Key Milestones:

- Design Period: Sep 2021 - Aug 2022
- Bid Date: Mar 2024
- Construction Period: Jun 2024 - Jun 2025



21

## CAPITAL PROJECT UPDATE

### Project Name:

Temple Of Justice- Systems Renewal & Updates (22-113)

### Key Milestones:

- Design Period: July 2021 - May 2022
- Bid Date: May 2022
- Construction Period: July 2022 - Sep 2024



22



# CAPITAL PROJECT UPDATE

## Project Name:

### DES 2023-25 Minor Works Projects

- LEG - Exterior Safety Railings
- TOJ - Exterior Safety Railings
- Campus Signage and Wayfinding
- HLB – HVAC Recommissioning
- Archives – Investigate & Repair Sewer Lines
- Capitol Way Pedestrian Bridge Repair
- Cherberg-O'Brien – Replace UST Monitor
- HLB-Plaza Garage – Replace Failed Tunnel Skylight
- LEG - Basement Water Infiltration
- Dolliver - Replace Loading Dock Roof
- Dolliver - Roof Fall Protection Upgrades
- Powerhouse - Replace Sewer Main

## Key Milestones:

- Design Period: Sep 2023 - Sep 2024
- Bid Date: Jan 2024 - Sep 2024
- Construction Period: Jan 2024 – Jun 2025



23

# QUESTIONS OR COMMENTS?

# THANK YOU!



[oliver.wu@des.wa.gov](mailto:oliver.wu@des.wa.gov)



xxxx



[www.des.wa.gov](http://www.des.wa.gov)

24



## State Capitol Campus Committee

September 19, 2024

### **6B- 2025-2027 Capital Budget Request – Overview**

Purpose: **Informational**

Sponsor(s): Bill Frare, FPS Assistant Director, and  
John Lyons, FPS Planning and Project Delivery, APM

Presenters: John Lyons, [john.lyons@des.wa.gov](mailto:john.lyons@des.wa.gov)

#### **Description:**

##### **2025-2027 Capital Budget Request – Overview**

The 2025-2027 Capital Budget Request presentation aims to provide committee members with an overview of the proposed budget for the next biennium, including a review of the agency's strategic framework and a reflection on historical funding trends. The presentation includes:

- A brief historic funding overview intended to orient the committee to the magnitude of past requests.
- A discussion on the guiding principles of the capital planning framework.
- A discussion of how the guiding principles were used to construct our 2025 - 2027 capital budget request.

#### **Historical Context**

The presentation begins with a review of funding from previous biennia, illustrating the magnitude of appropriations and requests over time.

#### **Capital Planning Framework**

The guiding principles of "Finish what we start," "Worst First," and "Change the Existing Plan as Little as Necessary" frame the capital planning efforts. The "Worst First" principle, driven by the Facility Condition Assessment, prioritizes projects that address the most severe risks and deficiencies first, ensuring that the most urgent needs are met promptly and efficiently.

#### **2025-2027 Capital Budget Request and Priority Projects**

The core of the presentation focuses on the specific requests for the 2025-2027 biennium, highlighting how the capital planning framework motivated the selected projects.

**Next Steps:**

Enterprise Services will provide project updates to CCDAC and SCC at future regularly scheduled meetings.

**Requested Action:**

This is an informational item. No action by SCC is necessary.

**List of Attachments:**

Attachment: Attachment: 6BB: *2025-2027 Capital Budget Request – Overview Presentation*



**DES**  
Washington State  
DEPARTMENT OF  
ENTERPRISE SERVICES

## **2025-2027 Capital Budget Request – Overview**

**Planning & Project Delivery**  
FACILITY PROFESSIONAL SERVICES  
September 19, 2024

1

## PURPOSE

**For today**

- Historical Funding Overview
- Introduce Capital Planning Framework
- Review 2025-27 Capital Budget Request

2

## 2005 – 2023 SUMMARY

Biennium	Request	Appropriation
05-07	\$64,873,000	\$52,885,000
07-09	\$300,036,000	\$56,772,000
09-11	\$92,391,000	\$37,308,000
11-13	\$42,767,000	\$11,091,000
13-15	\$78,311,000	\$40,636,000
15-17	\$63,622,000	\$97,257,000
17-19	\$195,491,000	\$37,388,000
19-21	\$65,866,000	\$23,010,000
21-23	\$175,611,000	\$123,975,000
23-25	\$357,016,675	\$160,025,000

### Mean

Request \$144M      Appropriation \$64M

### Min

Request \$43M      Appropriation \$11M

### Max

Request \$357M      Appropriation \$160M

3

## GUIDING FRAMEWORK

**Finish what we start**

**Worst First**

**Change the Existing Plan as Little as Necessary**

4

## FINISH WHAT WE START

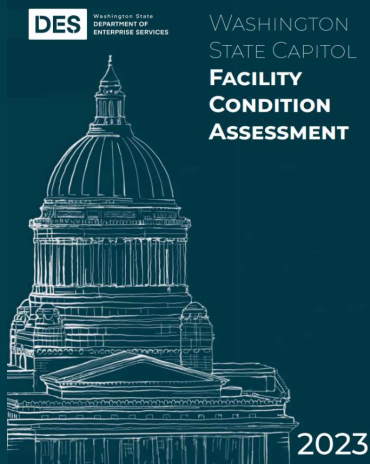
**10** Projects

**\$233** Million

**Commit to Completion:**  
Follow-through is important, discourage incomplete projects due to budget constraints or changing priorities.

5

## WORST FIRST



**Prioritized Investment:**  
Evaluate building performance based on metrics like condition assessment, energy performance, seismic risk, and regulatory requirements.

6

# CAMPUS CONDITION ASSESSMENT

## CAMPUS MAP



## SATELLITE BUILDINGS



7

# WEST CAMPUS CONDITION ASSESSMENT



### CONDITION SUMMARY

The West Campus showcases buildings across the spectrum of condition ratings, from poor to excellent. The Powerhouse stands out with a high FCI of 35%, indicating poor condition and significant need for repairs or potential replacement. In contrast, buildings like Helen Sommers, which have a very low FCI of 1%, are in excellent condition.

Many buildings, such as the Temple of Justice and Legislative Building, are historically significant and have FCIs that indicate good conditions, suggesting successful ongoing maintenance and preservation efforts.

### WEST CAMPUS

**NUMBER OF BUILDINGS:** 8  
**SQUARE FOOTAGE:** 873,276  
**OLDEST BUILDING:** 1907  
**NEWEST BUILDING:** 2017

ID	Facility Name	Year Built	GSF	FCI
7	Powerhouse	1920	10,000	35%
6	Manson	1927	21,400	6%
1	Legislative	1928	255,564	4%
4	Insurance	1921	65,502	4%
5	Cherberg	1937	100,377	3%
2	Temple of Justice	1919	85,900	3%
3	O'Brien	1940	100,700	2%
8	Helen Sommers	2017	233,833	1%



8

# EAST CAMPUS CONDITION ASSESSMENT



### CONDITION SUMMARY

Buildings on the East Campus mostly exhibit good to fair conditions. The Plaza Garage, however, has a higher FCI of 19%, suggesting it is nearing poor condition and may require more extensive repairs. The Transportation Building, with an FCI of 28%, is in poor condition, highlighting a critical need for interventions.

ID	Facility Name	Year Built	GSF	FCI
3	Archives	1964	51,317	4%
8	Capitol Child Care	2021	9,593	6%
1	Capitol Court	1930	45,142	6%
4	Highway License	1962	193,900	6%
2	Natural Resources	1992	387,558	6%
5	Office Building 2	1975	379,204	16%
6	Plaza Garage	1973	846,100	19%
7	Transportation	1971	204,053	28%

**EAST CAMPUS**

NUMBER OF BUILDINGS: 8  
 SQUARE FOOTAGE: 2,604,267  
 OLDEST BUILDING: 1930  
 NEWEST BUILDING: 2021

**DES** Washington State DEPARTMENT OF ENTERPRISE SERVICES

9

# SATELLITE CONDITION ASSESSMENT



### CONDITION SUMMARY

Many satellite buildings have critical or poor FCI conditions. The 721 Columbia building has the worst FCI of any building assessed. Other buildings, Washington Building, Columbia Garage, and Union have also been assessed as critical condition, highlighting a need for intervention. Dolliver stands out with a fair FCI of 6%.

ID	Facility Name	Year Built	GSF	FCI
2	721 Columbia	1967	3,169	74%
5	Washington Building	1953	14,580	63%
4	Columbia Garage	1971	71,000	63%
5	Union	1956	12,900	58%
	Kelso	1981	60,585	17%
1	Old Capitol	1892	120,500	17%
	Yakima	1986	99,000	13%
	Perry St Child Care	1950	7,138	14%
	Isabella Bush	1992	47,200	14%
	Alaska Street	1957	23,293	13%
3	Dolliver	1914	23,385	6%
	Heritage Park - Restrooms	1964	3,969	22%

**SATELLITE**

NUMBER OF BUILDINGS: 12  
 SQUARE FOOTAGE: 1,238,919  
 OLDEST BUILDING: 1914  
 NEWEST BUILDING: 1992

**DES** Washington State DEPARTMENT OF ENTERPRISE SERVICES

10



# CHANGE THE EXISTING PLAN AS LITTLE AS NECESSARY



**Focus on Stability & Data-Driven Adjustments:**  
 Modifying the existing capital plan only when substantiated by data.

11

## 2025 -27 REQUEST

Priority	Project	Forecast
1	Facility Professional Services Staffing	\$28,000,000
2	Minor Works	\$31,000,000
3	Deschutes Estuary Restoration	\$20,000,000
4	Legislative Campus Modernization	\$50,000,000
5	Capitol Campus Security	\$44,110,000
6	Legislative Building Systems Rehabilitation	\$16,307,000
7	NRB - Replace Piping for Wet Fire Suppression	\$10,126,000
8	Modular Building - Critical Repairs & Upgrades	\$43,500,000
9	Critical Campus Heat System Replacement	\$9,500,000
10	GA - Building Demolition	\$15,000,000
11	Transportation - Preservation	\$17,000,000
12	West Campus - Hillside Stabilization - Comprehensive Design & Evaluation	\$500,000
13	Leg - Legislative Building Cleaning	\$1,665,000
14	Leg - Restore Chamber Skylights	\$7,781,000
15	Leg - Chamber Restoration	\$3,109,000
16	Leg - South Parking Lot Utilities & Drainage Improvements	\$4,252,000
17	O'Brien - Repair HVAC System	\$2,492,000
18	East Plaza - Water Infiltration & Elevator Repairs	\$580,000
19	Cherberg-O'Brien - Repair Tunnel	\$3,003,000
20	Campus - Arc Flash Electrical Code Compliance	\$1,200,000
21	Campus - Critical Infrastructure Assessment	\$930,000
22	North Gateway - Comprehensive Plan	\$640,000
23	Campus - EV Study	\$560,000
24	NRB - Emergency Generator Replacement	\$1,161,000
<b>Total:</b>		<b>\$305 M</b>

12

## FINISH WHAT WE START

Priority	Project	Forecast
1	Facility Professional Services Staffing	\$28,000,000
2	Minor Works	\$31,000,000
3	<b>Deschutes Estuary Restoration</b>	<b>\$20,000,000</b>
4	<b>Legislative Campus Modernization</b>	<b>\$50,000,000</b>
5	<b>Capitol Campus Security</b>	<b>\$44,110,000</b>
6	<b>Legislative Building Systems Rehabilitation</b>	<b>\$16,307,000</b>
7	<b>NRB - Replace Piping for Wet Fire Suppression</b>	<b>\$10,126,000</b>
8	<b>Modular Building - Critical Repairs &amp; Upgrades</b>	<b>\$43,500,000</b>
9	<b>Critical Campus Heat System Replacement</b>	<b>\$9,500,000</b>
10	<b>GA - Building Demolition</b>	<b>\$15,000,000</b>
11	<b>Transportation - Preservation</b>	<b>\$17,000,000</b>
12	West Campus - Hillside Stabilization - Comprehensive Design & Evaluation	\$500,000
13	Leg - Legislative Building Cleaning	\$1,665,000
14	<b>Leg - Restore Chamber Skylights</b>	<b>\$7,781,000</b>
15	Leg - Chamber Restoration	\$3,109,000
16	Leg - South Parking Lot Utilities & Drainage Improvements	\$4,252,000
17	O'Brien - Repair HVAC System	\$2,492,000
18	East Plaza - Water Infiltration & Elevator Repairs	\$580,000
19	Cherberg-O'Brien - Repair Tunnel	\$3,003,000
20	Campus - Arc Flash Electrical Code Compliance	\$1,200,000
21	Campus - Critical Infrastructure Assessment	\$930,000
22	North Gateway - Comprehensive Plan	\$640,000
23	Campus - EV Study	\$560,000
24	NRB - Emergency Generator Replacement	\$1,161,000
<b>Total:</b>		<b>\$305 M</b>

13

## WORST FIRST

Priority	Project	Forecast
1	Facility Professional Services Staffing	\$28,000,000
2	<b>Minor Works</b>	<b>\$31,000,000</b>
3	Deschutes Estuary Restoration	\$20,000,000
4	Legislative Campus Modernization	\$50,000,000
5	Capitol Campus Security <i>(See Program Arrays)</i>	\$44,110,000
6	Legislative Building Systems Rehabilitation	\$16,307,000
7	NRB - Replace Piping for Wet Fire Suppression	\$10,126,000
8	Modular Building - Critical Repairs & Upgrades	\$43,500,000
9	GA - Building Demolition	\$15,000,000
10	Critical Campus Heat System Replacement	\$9,500,000
11	Transportation - Preservation	\$17,000,000
12	West Campus - Hillside Stabilization - Comprehensive Design & Evaluation	\$500,000
13	Leg - Legislative Building Cleaning	\$1,665,000
14	Leg - Restore Chamber Skylights	\$7,781,000
15	Leg - Chamber Restoration	\$3,109,000
16	Leg - South Parking Lot Utilities & Drainage Improvements	\$4,252,000
17	O'Brien - Repair HVAC System	\$2,492,000
18	East Plaza - Water Infiltration & Elevator Repairs	\$580,000
19	Cherberg-O'Brien - Repair Tunnel	\$3,003,000
20	Campus - Arc Flash Electrical Code Compliance	\$1,200,000
21	Campus - Critical Infrastructure Assessment	\$930,000
22	North Gateway - Comprehensive Plan	\$640,000
23	Campus - EV Study	\$560,000
24	NRB - Emergency Generator Replacement	\$1,161,000
<b>Total:</b>		<b>\$305 M</b>

14

## CHANGE THE EXISTING PLAN AS LITTLE AS NECESSARY

Priority	Project	Forecast
1	Facility Professional Services Staffing	\$28,000,000
2	Minor Works	\$31,000,000
3	Deschutes Estuary Restoration	\$20,000,000
4	Legislative Campus Modernization	\$50,000,000
5	Capitol Campus Security <i>(See Program Arrays)</i>	\$44,110,000
6	Legislative Building Systems Rehabilitation	\$16,307,000
7	NRB - Replace Piping for Wet Fire Suppression	\$10,126,000
8	Modular Building - Critical Repairs & Upgrades	\$43,500,000
9	GA - Building Demolition	\$15,000,000
10	Critical Campus Heat System Replacement	\$9,500,000
11	Transportation - Preservation	\$17,000,000
12	West Campus - Hillside Stabilization - Comprehensive Design & Evaluation	\$500,000
13	Leg - Legislative Building Cleaning	\$1,665,000
14	Leg - Restore Chamber Skylights	\$7,781,000
15	Leg - Chamber Restoration	\$3,109,000
16	Leg - South Parking Lot Utilities & Drainage Improvements	\$4,252,000
17	O'Brien - Repair HVAC System	\$2,492,000
18	East Plaza - Water Infiltration & Elevator Repairs	\$580,000
19	Cherberg-O'Brien - Repair Tunnel	\$3,003,000
20	Campus - Arc Flash Electrical Code Compliance	\$1,200,000
21	Campus - Critical Infrastructure Assessment	\$930,000
22	North Gateway - Comprehensive Plan	\$640,000
23	Campus - EV Study	\$560,000
24	NRB - Emergency Generator Replacement	\$1,161,000
<b>Total:</b>		<b>\$305 M</b>

15

# QUESTIONS?

16

# THANK YOU



[DESPlanning@des.wa.gov](mailto:DESPlanning@des.wa.gov)



360-810-0676



[www.des.wa.gov](http://www.des.wa.gov)



## State Capitol Campus Committee

September 19, 2024

### **6C- Legislative Campus Modernization Project**

Purpose: **Informational**

Sponsor(s): Bill Frare, DES FPS Assistant Director  
Presenters: Wesley Kirkman, LCM Project Director  
Brian Pickering, Project Manager  
Sidney Hunt, Project Manager  
Katy Stark, Project Manager

#### **Description:**

The 2020 Supplemental (ESSB 6248), 2021-23 Biennial (SHB 1080), 2023-25 Biennial (ESSB 5200), and 2024 Supplemental Capital Budgets appropriated funding for the Legislative Campus Modernization (LCM) project which includes:

- \$94,688,000 for the design and construction of the Newhouse Building replacement.
- \$24,457,000 for the design and construction of the modular building and site improvements to both Opportunity Sites 6 and 5.
- \$90,231,000 for the design, construction, and restoration of the historic portion of the Pritchard Building as well as stabilization of the hillside immediately west of Opportunity Site 5.
- \$2,900,000 for the design of the O'Brien Building 3<sup>rd</sup> and 4<sup>th</sup> floors renovation.

Since the last SCC meeting, the following has been accomplished:

- Newhouse building envelope (precast siding, windows, and roof), south parking lot paving, and rooftop mechanical units and solar array installed.
- Newhouse electrical, mechanical, and plumbing, elevator and sheetrock nearing completion.
- Newhouse interior paint, flooring, and low voltage cabling well underway.
- Opportunity Site 6 improvements including Capitol Way sidewalk, 15<sup>th</sup> Street paving and sidewalk, and stormwater system complete.
- Pritchard occupants and historic artwork moved out and book stacks demo complete.
- Pritchard hillside stabilization started, drilling 230 concrete piles started mid-Aug.; 115 complete.
- Installing underground mechanical, electrical, plumbing (MEP) beneath historic building underway.

#### **Next Steps:**

- Newhouse install doors and other finishes, furniture and other equipment, landscape and irrigation, and begin move in process.
- Opportunity Site 6 pave Columbia Street.
- Pritchard install concrete platform on top of piles, begin foundations in fall, and structural steel in winter.
- O'Brien begins spring 2026.

#### **Requested Action:**

This is an informational item. No action by SCC is necessary.

**List of Attachments:**

Attachment: 6CC- Legislative Campus Modernization Project Update – Sep. 2024

# LEGISLATIVE CAMPUS MODERNIZATION UPDATE


SCC

September 19, 2024



(updates as of 8/30/24)

1



**WASHINGTON STATE CAPITOL**

**2021 - 2024**

**Irv Newhouse**

December 2021 - December 2022  
Newhouse design  
January - April 2023  
Deconstruction of Newhouse & Press Houses  
May 2023  
Demolition of Newhouse & Press Houses  
June 2023 - November 2024  
New building construction  
**NOVEMBER 2024**  
Estimated substantial completion

**2021 - 2026**

**Joel M. Pritchard**

April 2021 - April 2022  
Preservation & validation study  
April - July 2023  
New design  
March 2024 - July 2026  
Construction  
**AUGUST 2026**  
Estimated substantial completion

mid-2026 - late 2026

**John L. O'Brien**

2026  
Design  
2026  
Construction  
Timeline subject to change

## Legislative Campus Modernization

The Legislature directed Department of Enterprise Services (DES) to manage work for Legislative Campus Modernization (LCM) over the next several years on a portion of the Historic West Capitol Campus. A series of projects will address serious life-safety issues with the buildings, overcrowding, and access for legislative agencies and the public while upgrading existing building systems and making Newhouse and Pritchard high performance, net zero ready facilities in keeping with State of Washington Executive Order 18 01.

**Irv Newhouse**


Built in 1934, the building is beyond its life, and the interior is very crowded during legislative sessions.

**Joel M. Pritchard**

Built in 1958 and on the National Registry of Historic Places, the building has significant health and life safety hazards and currently cannot support efficient legislative functions.

**John L. O'Brien**

Planned renovation on top two floors will relieve interior crowding.



**O'Brien Renovation**  
3<sup>rd</sup>/4<sup>th</sup> Floors  
Spring '26-Fall '26

**Newhouse Building Replacement**  
4 Story, 59k SF  
Complete in Nov. '24

**Pritchard Expansion & Renovation**  
1 Story, 18k SF Renovation  
3 Story, 58k SF Expansion  
Mar. '24-Jul. '26

(updates as of 8/30/24)

2

# NEWHOUSE REPLACEMENT PROJECT



3

## NEWHOUSE CONSTRUCTION UPDATES

- Building envelope, south parking lot paving, and rooftop mechanical units and solar array installed.
- Capitol Way sidewalk, 15th Street paving and sidewalk improvements, and Site 6 stormwater system complete.
- Electrical, mechanical, and plumbing, elevator and sheetrock installation all nearing completion.
- Interior paint, flooring, and low voltage cabling, well underway.
- Next:
  - Install doors, finishes, furniture and other equipment
  - Pave Columbia Street
  - Install landscape and irrigation
  - Begin move in

*(updates as of 8/30/24)*

4



## NEWHOUSE CONSTRUCTION PHOTOS



*(updates as of 8/30/24)*

5

## PRITCHARD AND O'BRIEN RENOVATION AND EXPANSION PROJECTS



6

## PRITCHARD AND O'BRIEN UPDATES

### Construction and hillside stabilization underway:

- Occupants and historic artwork moved out and book stacks demo complete.
- Drilling 230 concrete piles started mid-Aug.; approx. 115 complete.
- Installing underground MEP beneath historic building underway.

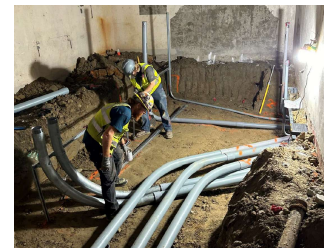
### Next Steps:

- Concrete platform on top of piles starts in late Sep.
- Foundation for both new 3 story addition and historic rehabilitation starts late Oct.
- Structural steel starts Jan. 2025.
- O'Brien 3rd & 4th floors renovation starts spring 2026.

*(updates as of 8/30/24)*

7

## PRITCHARD PHOTOS

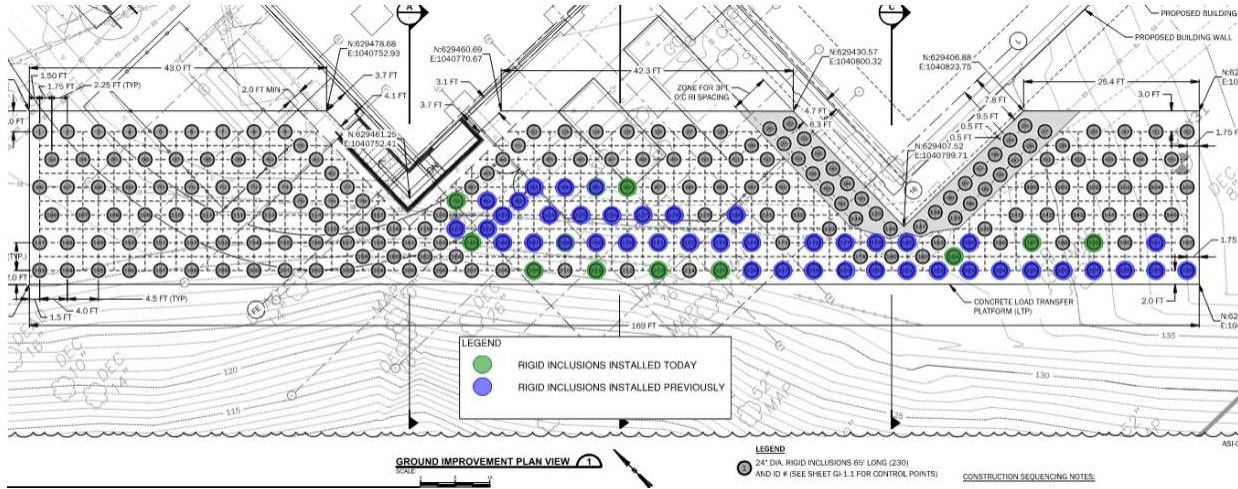


*(updates as of 8/30/24)*

8

# STABILIZATION STATUS

as of 8/21/24



(updates as of 8/30/24)

9

## QUESTIONS OR COMMENTS?

## THANK YOU!



DesLCM@des.wa.gov



Subscribe for updates  
<https://bit.ly/43Htc2Q>



[www.des.wa.gov](http://www.des.wa.gov)

(updates as of 8/30/24)

10



## **State Capitol Campus Committee**

September 19, 2024

### **6D- General Administration Building Demolition**

Purpose: **Informational**

Sponsor(s): Department of Enterprise Services (DES)

Presenters:

- Oliver Wu, Program Manager with the Department of Enterprise Services (DES), (951) 961-0420, [Oliver.Wu@DES.WA.gov](mailto:Oliver.Wu@DES.WA.gov)
- Kelvin Liu, Project Manager with Walker Consultants, (206) 745-9555, [KLiu@WalkerConsultants.com](mailto:KLiu@WalkerConsultants.com)

#### **Description:**

The General Administration (GA) Building, located at the corner of Columbia St. and Union Ave. on the Capitol Campus in Olympia, WA, is slated for demolition. This project is part of an effort to optimize state property and ensure safety and efficiency within the Capitol Campus. The GA Building was completed in 1956. In 2008 the Washington State Department of Archaeology and Historic Preservation (DAHP) designated the GA Building as a historical structure in an effort to recognize and preserve the state's architectural and historical heritage. However, the building has sat vacant since 2018 due to numerous deficiencies including inadequate seismic resistance, a prevalence of hazardous materials that requires abatement, and non-compliance with current fire codes, electrical codes, and mechanical/plumbing codes. Therefore, the building is planned for demolition while ensuring its prominent historical features and artifacts are preserved in accordance with DAHP.

The Department of Enterprise Services (DES) is overseeing this project, which includes comprehensive planning and execution for the building's demolition. The final design is scheduled to be completed by September 13, 2024. The scope of work covers hazardous material abatement, thorough environmental and historical mitigation measures, retaining wall repairs, and post-demolition site redevelopment for increased parking, green spaces, a public restroom, and a new state seal exhibit using historical artifacts from the GA Building.

The alternatives considered for this project included complete demolition with redevelopment, partial preservation with adaptive reuse, and the no-action alternative. The preferred option is full demolition with a temporary surface lot and restroom facility, which provides the greatest benefit in terms of safety, future site utility, and alignment with the Capitol Campus Master Plan. Mitigation strategies include documentation of the building's historical significance, material salvage, preservation of landscape integration post-demolition, and reallocating recently lost campus parking and restroom facilities via a new surface lot.



**Next Steps:**

- Finalize historical preservation plan with DES and DAHP.
- Continue to conduct stakeholder outreach, meetings, and workshops.
- **September 13, 2024:** Final design submission based on comments received.
- Review SEPA environmental documents.
- Planned dates for future presentations:
  - CCDAC – November 14, 2024

**Requested Action:**

This is an informational item. No action by SCC is necessary.

**List of Attachments:**

Attachment: General Administration Building Demolition Project Presentation (9-19-2024).



# General Administration Building Demolition (DES Agreement No. 2024-029 A)

September 19, 2024



1

## Project History

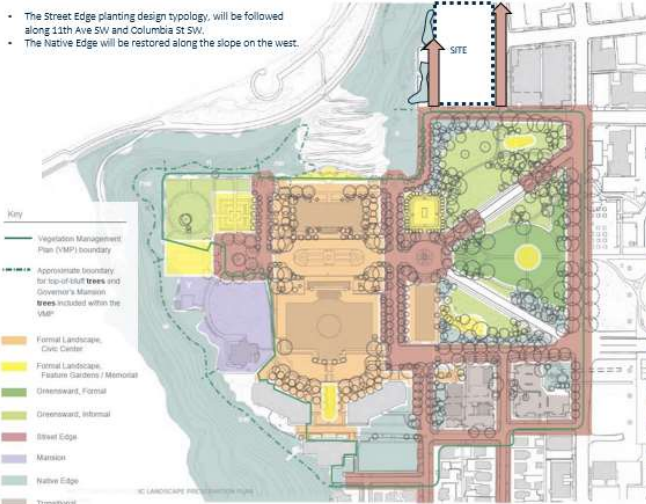


2



# Olmsted Plan Landscape Typology

- The Street Edge planting design typology, will be followed along 11th Ave SW and Columbia St SW.
- The Native Edge will be restored along the slope on the west.



Reference: West Campus Historic Landscape Preservation Plan

5

# Existing and Proposed Trees



- LEGEND
- Existing trees to remain
  - 88 New trees proposed
  - 2 Trees to be removed



DECIDUOUS TREES			CONIFER TREES
 <b>QUERCUS ROBUR</b> <i>English oak</i>	 <b>WIRELESS ZELKOVA</b> <i>Zelkova serrata 'Schmadow'</i>	 <b>SAUCER MAGNOLIA</b> <i>Cornus s. 'Kelsey'</i>	 <b>DOUGLAS FIR</b> <i>Pseudotsuga menziesii</i>
 <b>KATSURA</b> <i>Cercidiphyllum japonicum</i>	 <b>GINKGO AUTUMN GOLD</b> <i>Ginkgo biloba 'Autumn Gold'</i>	 <b>TULIP TREE</b> <i>Liriodendron tulipifera</i>	 <b>EXCELSA CEDAR</b> <i>Thuja plicata 'Excelsa'</i>
 <b>AMERICAN HORNBREAM</b> <i>Carpinus caroliniana</i>	 <b>VINE MAPLE</b> <i>Acer circinatum</i>	 <b>WHITE DOGWOOD</b> <i>Cornus: 'Eddie's White Wonder'</i>	 <b>WESTERN RED CEDAR</b> <i>Thuja plicata</i>

ⓘ Indicates Olmsted legacy species  
 ⓘ Indicates pollinator species (per RCW 39.04.410, a minimum of 25% of the proposed plants are species beneficial to pollinator species)

New trees proposed

6



# Temporary Restroom & Washington State Seal Monument

LOCATION KEY

RESTROOM FACILITY

WASHINGTON STATE SEAL MONUMENT

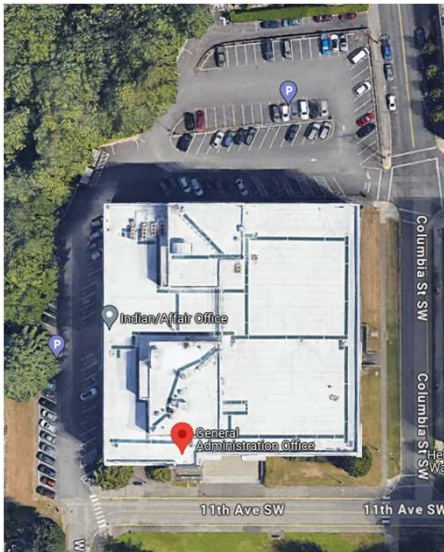
11<sup>TH</sup> AVE FRONTAGE IMPROVEMENTS ELEVATION

MATERIALS – Precast concrete panel for the seal and cast in place concrete wall and planter. Color shall match the existing General Administration Building façade color and coated with graffiti resistant coating.

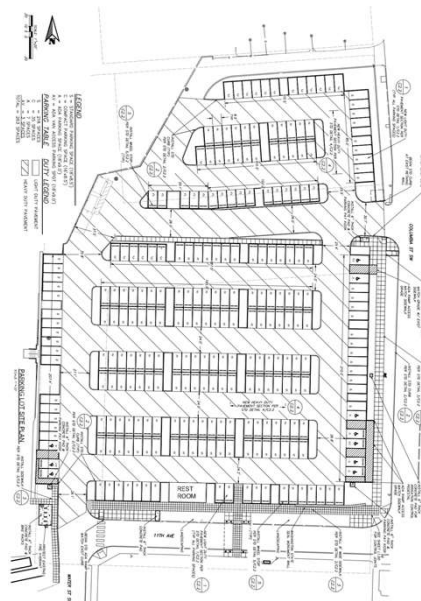
WALKER CONSULTANTS HBB

7

# Questions?



PRE-DEMOLITION



WALKER CONSULTANTS

PERTEET

NW

HBB

IML

HWA

40 F & A

INNOVEX

IF

8



Washington State  
**DEPARTMENT OF  
ENTERPRISE SERVICES**

## **State Capitol Campus Committee**

*Lieutenant Governor Denny Heck, Secretary of State Steve Hobbs,  
Governor Inslee's Designee Kelly Wicker, and Commissioner of Public Lands Hilary Franz's designee Katy Taylor*

**SEPTEMBER 19, 2024**

(HYBRID ACCESS MEETING)

### **7 – Buildings and Grounds Overview**

**A. Olmsted Plaque**

**B. Big Belly Trash Receptacles**

**C. Marathon Trials Signage**

**INFORMATIONAL ITEM**



## State Capitol Committee

September 19, 2024

### **7A- Olmsted Commemorative Plaque**

Purpose: Informational

Sponsor(s): Department of Enterprise Services

Presenters: Dr. Brent Chapman; [brent.chapman@des.wa.gov](mailto:brent.chapman@des.wa.gov); 360-972-0753

#### **Description:**

Following guidelines in WAC 200-230, DES is proposing to install a 12" x 18" bronze commemorative plaque on a granite base to honor the Olmsted Brothers historic west campus landscape design. The plaque would be installed between Tivoli Fountain and the Medal of Honor, along the main east/west axis that defines west campus.

The guidance included in WAC 200-230-090 provides for standards of minor works on State Capitol Grounds. It states, "...Plaques. Historic markers describing a memorialized person, historic place or event, or plaques describing a work or identifying significant natural features shall be fabricated to meet the following standards:

- (1) Material - Cast bronze.
- (2) Letter style - Bookman.
- (3) Border style - Single line edge.
- (4) Background texture - Pebble.
- (5) Finish - Bronze satin face and edges, natural colored background, semi-gloss polyurethane finish.
- (6) Size - No larger than two hundred sixteen square inches (approximately 12" x 18"), no smaller than eighty square inches (approximately 8" x 10").
- (7) Mounting - Plaques shall be mounted on a concrete or cut stone base with a tilted face 12" or less above grade, to be determined by location of the plaque.

The Olmsted Brothers is an internationally recognized landscape architecture firm that has created the landscape designs for 11 state capitol grounds. Their design for the Washington State Capitol grounds was completed in 1929. Their design integrates a variety of trees, shrubs, flowers woodlands, water bodies, civic buildings and monuments to create an enjoyable and educational experience for visitors.

There is not any interpretive information present on campus to honor and share this legacy with the general public. Stakeholder feedback gathered during the LCM process suggested adding a commemorative plaque to west campus for the Olmsted Brothers landscape design.

**Next Steps:**

Fabricate bronze sign  
Procure granite base  
Install base and sign

**Requested Action:**

This is an informational item. No action by SCC is necessary.

**List of Attachments:**

Attachment: 7AA- SCC Olmsted plaque

# STATE CAPITOL COMMITTEE

## 09 19 2024

Dr. Brent Chapman, Horticulturist and Grounds Property Manager  
Buildings and Grounds

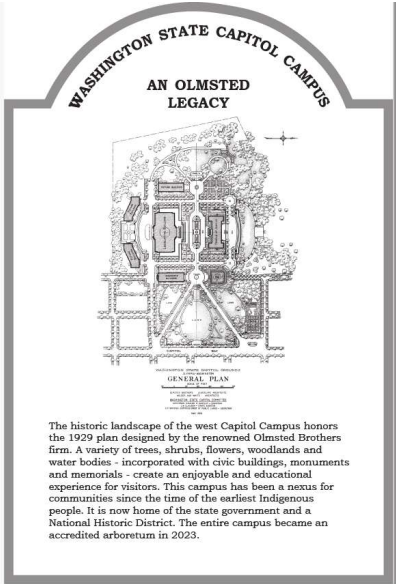


Washington State  
DEPARTMENT OF  
ENTERPRISE SERVICES

1

## OLMSTED BROTHERS COMMEMORATIVE PLAQUE

- The DES Sign Committee has approved a new commemorative plaque honoring the Olmsted Brothers historic landscape design
- The plaque follows WAC 200-230 guidelines
- The bronze plaque will be 12" x 18" and installed on a granite base
- Friends of Seattle's Olmsted Parks and DES Communications provided consultation on the text and sign layout



2

## SIMILAR PLAQUE ON WEST CAMPUS



3

## PROJECT LOCATION: WEST CAMPUS



4

## PROJECT SCHEDULE

Before end of November, 2024:	Prep site for installation
Before start of 2025 session:	Installation of plaque (dependent on fabrication schedule)

5

# THANK YOU



[brent.chapman@des.wa.gov](mailto:brent.chapman@des.wa.gov)



360-972-0753



[des.wa.gov](http://des.wa.gov)

6





## **State Capitol Campus Committee**

September 19, 2024

### **7B- Big Belly Trash Can Project**

Purpose: **Informational**

Sponsor(s): Department of Enterprise Services; Buildings and Grounds  
Presenters: Dr. Brent Chapman; Horticulturist/Grounds Property Manager  
360-972-0753; brent.chapman@des.wa.gov

#### **Description:**

In 2023 the Dept. of Enterprise Services Buildings & Grounds (B&G) began a pilot program to install new trash cans to replace the permanent curbside style 95 gallon trash cans. The goal was to reduce excessively heavy containers when full with something more manageable for B&G staff removing trash, increase the visual esthetic for visiting public to the Capitol Campus and begin taking advantage of the design and networking ability of modern waste handling equipment. For this endeavor Big Belly Smart Trash & Recycle Cans were chosen. Sylvester Park was selected for the Big Belly Pilot Program due to its high public use and visibility. Additionally, its primary waste receptacles were the 95 gallon curb style bins which didn't match the visual representation of the vision for the park by DES Management. It was the goal these new Big Belly waste containers would be easier to manage for staff, reduce excessively heavy & bulky waste due to its design features and be more visibly pleasing to the public.

The results have been overwhelmingly positive from DES staff and park visitors. Staff report that they no longer have bins that are too heavy to move. They also report that waste such as sleeping bags, car batteries and bulk household trash is no longer being dumped in the park. Their slimmer design and lower profile has increased visibility in the park and better match the vision for a pleasing visitor experience.

#### **Next Steps:**

Next steps for the Big Belly installation program:

- Install 1 Big Belly each at Marathon Park & Interpretive Center Boardwalk
- Install 2 Big Belly Waste Containers, 1 trash & 1 recycle at the NW Corner of the Winged Victory Circle
- Install 1 Big Belly Waste Container for trash at the Legislative Bldg SE Entrance under the Magnolia Tree

#### **Requested Action:**

##### **INFORMATIONAL ITEM**

This is an informational item. No action by SCC is necessary.



**List of Attachments:**

Attachment: 7BB- SCC Big Belly slide deck

# STATE CAPITOL COMMITTEE

09 19 2024

Dr. Brent Chapman, Horticulturist & Grounds Property Manager  
Buildings and Grounds



1

## BIGBELLY – SYSTEM OVERVIEW

**Portfolio of Waste & Recycling Bins**

- High & Standard capacity bins
- Choice of waste & recycling interface options
- Standard & customizable graphics
- Assortment of accessories

**Suite of Software Tools**

- CLEAN™ Management Console
- CLEAN™ Mobile apps



2

### BIG BELLYS CURRENTLY IN USE AT SYLVESTER PARK

- ✓ Neat/clean appearance and ease of service
- ✓ Meets ADA requirements



3

### BIG BELLYS – WHAT'S NEXT FOR THE WEST CAMPUS?

- ✓ Placement of a single near the Legislative Bldg. SE entrance
- ✓ Placement of a pair in the Winged Victory Circle in the NW corner



4

## STAKEHOLDER INPUT & COMMUNICATIONS: WEST CAMPUS BIG BELLYS

November 2023:	Met with Senate, House, Governor, Lt Governor, Sec State, Treasurer & LSS Facility Managers for input
May 2024:	Again, met with Governor, Lt Governor, Senate, House, Sec State, Treasurer & LSS Facility Managers for input
Feedback:	Positive response by all to appearance, ease of use. Questions were regarding possible use for signage  Positive response from CCDAC in August, 2024

5

# THANK YOU



[brent.chapman@des.wa.gov](mailto:brent.chapman@des.wa.gov)



360-972-0753



[des.wa.gov](http://des.wa.gov)

6



## State Capitol Committee

September 19, 2024

### **7C- Olympic Women's Marathon Trial Signage**>

Purpose: **Informational**

Sponsor(s): Olympic Women's Marathon Trials Legacy Committee  
Presenters: Dr. Brent Chapman, DES Horticulturist/Grounds Property Manager,  
360-972-0753, [brent.chapman@des.wa.gov](mailto:brent.chapman@des.wa.gov)  
Denise Keegan, Trials Legacy Committee chair,  
360-790-6270, [dkeegan@cco.net](mailto:dkeegan@cco.net)

#### **Description:**

Submitted by the Trials Legacy Committee

**History:** Marathon Park was dedicated in 1983 in honor of the Olympia area receiving the bid to host the inaugural First-Ever U.S. Women's Olympic Marathon Trials-- hosted in the Olympia area on May 12, 1984. The finish line for those first U.S. Olympic Marathon Trials was located on Deschutes Parkway – in front of Marathon Park.

In 2004, our committee (then known as The Olympic Trials Legacy Committee) joined Olympic Gold Medalist Joan Benoit Samuelson in dedicating an interpretive marker at Marathon Park to commemorate the event.

The location of that 2004 marker is not easily visible to most Marathon Park visitors. We propose moving the marker to a more prominent location within the park. Further, we propose adding a list of the women who competed in those first historic 1984 Women's Olympic Marathon Trials. The markers will also include a QR code for easy access to websites to educate park visitors about the historic significance of that event.

At present, the existing marker is located at the back of the Marathon Park parking lot – along the running trail that crosses Capital Lake. We propose the existing marker be moved to a more visible location at the front entrance of Marathon Park.

**PROPOSAL:** Move the existing marker to the grassy area at the front entrance to the park – parallel to the sidewalk on the left as one enters the park. We propose adding one additional interpretive panel next to the relocated original marker with the names of the original Trials participants. The markers would be located approximately 30' from the front public sidewalk parallel to Deschutes Parkway at the entrance to Marathon Park- approximately halfway between that front sidewalk along Deschutes Parkway and the public restrooms in the park. The marker would be set approximately 2' from the adjoining curved sidewalk that connects the Deschutes Parkway sidewalk to the public restrooms.

Contrary to the original 2004 marker, the new marker be lowered to approximately 26" high at the lowest point and 40" high at the highest point (to accommodate ADA requirements.) The markers would be the same size as the existing 2004 marker (24" by 36".) The two markers would be installed using the same (or parallel) posts.

**VISIBILITY AND SAFETY:** The markers would be installed at the same angle as the existing sidewalk – approximately 2' from the sidewalk to ensure safety for those using the sidewalk. These markers would not inhibit line of sight into the park and would be easily

**Next Steps:**

Fabricate new signs and stands.  
Install new signs and stands at Marathon Park

**Requested Action:**

**INFORMATIONAL ITEM**

This is an informational item. No action by SCC is necessary.

**List of Attachments:**

Attachment: SCC Marathon Trials signs PP 8-16-24

# STATE CAPITOL COMMITTEE

09 19 2024

Dr. Brent Chapman, Horticulturist and Grounds Property Manager  
Buildings and Grounds



1

## WOMEN'S MARATHON TRIAL INTERPRETIVE SIGNS

- The DES Sign Committee has approved the Olympic Women's Marathon Trial Legacy Committee's proposal for the relocation of the existing 2' x 3' interpretative sign and the installation of a new 2' x 3' companion sign next to it in Marathon Park
- The location of the existing sign is quite obscure.



2



## WOMEN'S MARATHON TRIAL INTERPRETIVE SIGNS

- The new companion sign will list the names of the Marathon Trial participants.
- Both signs will be placed 2' back from the existing sidewalk and placed in a mulched bed for easier maintenance by DES Grounds



3

## PROJECT SCHEDULE

Before end of 2024:

Sign and stand fabrication

Early 2025:

Relocation of existing sign and installation of new sign

4



# THANK YOU



[brent.chapman@des.wa.gov](mailto:brent.chapman@des.wa.gov)



360-972-0753



[des.wa.gov](http://des.wa.gov)



Washington State  
**DEPARTMENT OF  
ENTERPRISE SERVICES**

## **State Capitol Campus Committee**

*Lieutenant Governor Denny Heck, Secretary of State Steve Hobbs,  
Governor Inslee's Designee Kelly Wicker, and Commissioner of Public Lands Hilary Franz's designee Katy Taylor*

**SEPTEMBER 19, 2024**

(HYBRID ACCESS MEETING)

### **8 – Campus Memorials Update**

**A. Cal Anderson Memorial**

**B. Fallen Firefighter Memorial**

**INFORMATIONAL ITEM**



## **State Capitol Campus Committee**

September 19, 2024

### **8A- Senator Cal Anderson Memorial**

Purpose: **Informational**

Sponsor(s): Washington State Department of Enterprise Services

Presenters: John Lyons, AIA  
Assistant Program Manager – Planning  
Planning and Project Delivery Program | Facility Professional Services  
Washington State Department of Enterprise Services  
360-628-2139  
[john.lyons@des.wa.gov](mailto:john.lyons@des.wa.gov)

Aaron Luoma, ASLA  
Principal  
HBB Landscape Architecture  
206-931-6105  
[aluoma@hbbseattle.com](mailto:aluoma@hbbseattle.com)

#### **Description:**

The Senator Cal Anderson Memorial project is in the conceptual stages with the goal of producing a 30% level design by the end of the year in anticipation of pursuing additional funding in the 2025 legislative session. A diverse group of stakeholders has been formed by DES and has met with DES and design team members three times so far to provide input and guidance on site selection and design. An earlier process established the memorial location set to the northeast of the sunken garden and shall comply with WAC 200-230 guidelines for minor works.

The stakeholder engagement has resulted in establishing goals for the project, developing narratives on what is important to communicate with the memorial regarding Senator Anderson's life and legacy as Washington State's first open gay legislator. Descriptions of his life have been illustrated using key words and representational images in the attached presentation. The design team developed a contextual analysis of the site examining the historical, social and environmental influences that informed the creation of five concept alternatives. Each concept alternative includes sketches, example images, inspirational connections to Senator Anderson, and an evaluation of how the concept influences the context.

After Stakeholder Meeting #3, the group selected a preferred concept that includes a small circular space with a rounded bench set into the landscape, significant boulders, stairs, and planting. Additional feedback on this concept was provided at the meeting and incorporated in the attached.

#### **Next Steps:**

Project schedule remaining for Conceptual Design to be completed by end of the year 2024:

- Stakeholder Meeting #5 (late September)
- Stakeholder Meeting #6 (early October)
- Revised Concept Proposal (mid October)
- CCDAC Meeting #2 (mid November) - informational
- SCC Meeting #2 (mid December) - informational
- Stakeholder Meeting #7 (mid December)

**Requested Action:**

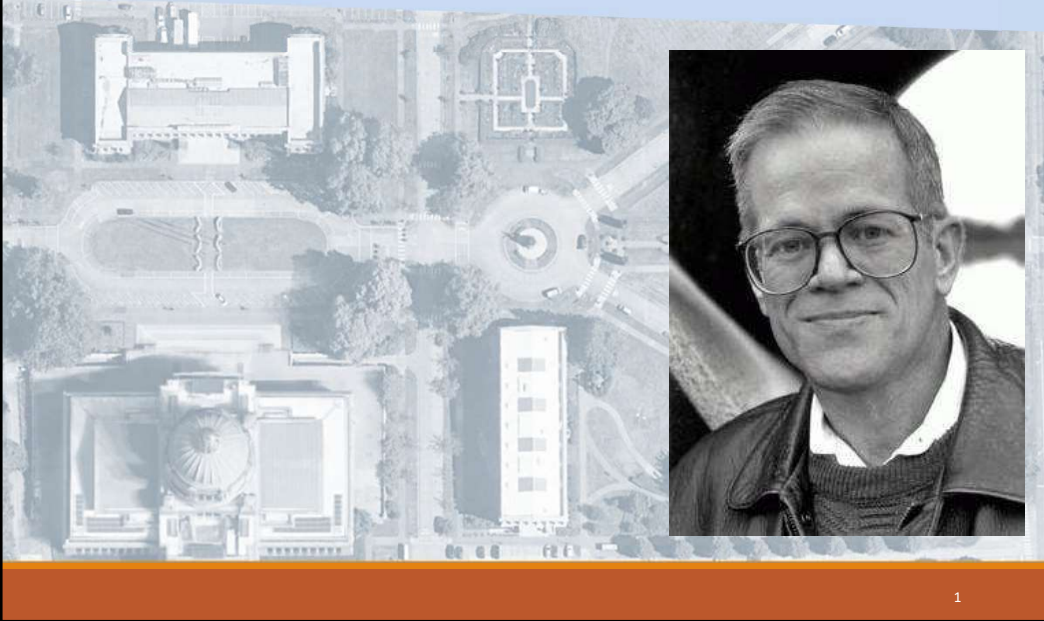
This is an informational item. No action by SCC is necessary.

**List of Attachments:**

2024\_0914\_CalAnderson Mem SCC.pdf

# SENATOR CAL ANDERSON MEMORIAL

State Capitol Committee  
September 19, 2024



## Content

- Goals –
- Schedule –
- Stakeholder Engagement Plan –
- What we have heard –
- Site Location –
- Contextual Analysis –
- Draft Concepts –
- Preferred Concept –



# Goals

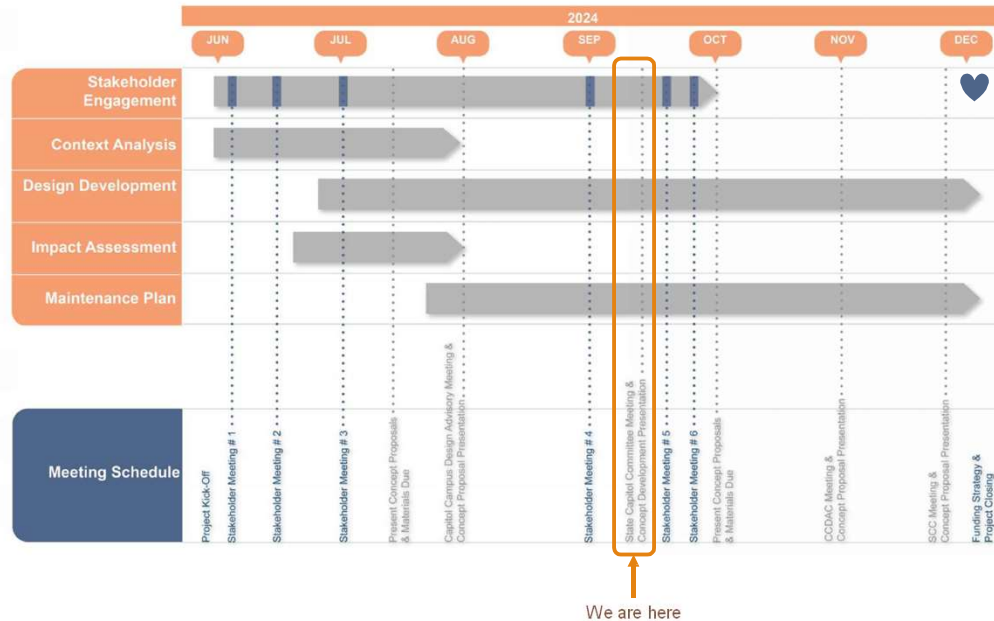
- Honor Senator Cal Anderson as a civil rights champion and Washington's first openly gay legislator
- Honor Senator Cal Anderson for his service in the Vietnam War
- Reflect his character and legacy in the memorial design
- Quiet location for a contemplative space
- Provide an inclusive and accessible space for users to feel safe
- Complement the historic West Capitol Campus



State Capitol Committee | September 19, 2024  
CAL ANDERSON MEMORIAL

3

# Schedule



We are here

State Capitol Committee | September 19, 2024  
CAL ANDERSON MEMORIAL

4

# Stakeholder Engagement Plan

**Stakeholders / Groups**

- Eric Ishino
- Washington State Senate
- Washington State House of Representatives
- Office of Governor
- Office of Secretary of State
- LGBTQ Commission
- Washington State Arts Commission (Arts WA)
- Washington Department of Veteran Affairs
- Department of Enterprise Services

**Organizations**

- Capitol Campus Design Advisory Committee (CCDAC)
- State Capitol Committee (SCC)

- Greater LGBTQ+ community
- Public

Currently invited stakeholders & organizations

Current organizations

Consider who in the future should be involved and/or informed of the project

State Capitol Committee | September 19, 2024  
CAL ANDERSON MEMORIAL
5

5

# Stakeholder Engagement Plan

**Stakeholder Meeting #1 (Kick off) – June 4th**

- Introductions
- Goals
- Guidelines
- Approach

**Stakeholder Meeting #2) – June 25th**

- Stakeholder Engagement Plan
- Draft Context Analysis
- Draft Conceptual Diagrams

**Stakeholder Meeting #3 – July 24th**

- Revisions to Context Analysis
- Draft Concepts
- Draft Impact Assessment

**Submittal (no meeting) –**

- Draft Concept
- Revisions to Context Analysis
- Draft Impact Assessment

Listening, development of ideas, draft concepts, working together to refine ideas

---

**Capitol Campus Design Advisory Committee (CCDAC) Meeting – August 15th**

- Present Draft Context Analysis, Concept, and Impact Assessment

**Stakeholder Meeting #4 – September 4th**

- Review CCDAC comments and any public comments received during CCDAC meeting
- Draft Maintenance, Cost & Implementation Plans

State Capitol Committee | September 19, 2024  
CAL ANDERSON MEMORIAL
6

6

## Stakeholder Engagement Plan

State Capitol Committee (SCC) – September 19th TODAY!

Stakeholder Meeting #5 – week of September 23rd

- Review SCC comments and any public comments received during SCC meeting
- Revisions to deliverables based on feedback

Stakeholder Meeting #6 – week of October 7th

- Revisions to all deliverables based on feedback

Concept Proposal Submittal (no meeting) – week of October 18th

- Revised Concept

} Making final revisions to Concept documents based on stakeholder, CCDAC and SCC feedback

---

Pause

Capitol Campus Design Advisory Committee (CCDAC) Meeting – week of November 14th

- Present Concept Proposal


State Capitol Committee (SCC) – week of December 12th

- Present Concept Proposal

Stakeholder Meeting #7 – week of December 16th

- Submit final documents
- Recap CCDAC & SCC, and public comments
- Celebrate!

} Presentations Expecting minimal changes, will document possible revisions to track for Final Design



State Capitol Committee | September 19, 2024  
CAL ANDERSON MEMORIAL
7

7

## What we have heard...(and still listening)

First openly gay legislator    Overcame    Incremental

Stood up    Direct    Collaborative    Challenged

Transparent    Determined    Life in the trenches

Warm & Cheerful    Contemplative    Legacy

Hopeful    Vietnam war veteran    Groundbreaking

Leader    Perseverance    Meticulous    Meditative

Connectivity    Adventure    Educate    Forcefulness

State Capitol Committee | September 19, 2024  
CAL ANDERSON MEMORIAL
8

8



## What we have heard...(and still listening)

State Capitol Committee | September 19, 2024  
CAL ANDERSON MEMORIAL

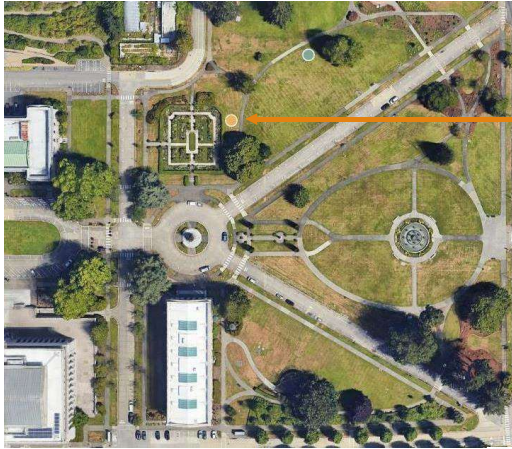
9

## Interpreting we have heard...(and still listening)

State Capitol Committee | September 19, 2024  
CAL ANDERSON MEMORIAL

10

# Site Location



East of the Sunken Garden

### Previous Suggested Design Elements

- A low wall
- A simple bench
- Low sculpture/ neutral artwork
- Interpretive signage
- Neutral hardscape/ low plantings



Memorial Guidelines



WAC 200 – 230:  
 (6a) Minor works shall honor an individual  
 Minor works may include small artistic works and sculptural elements;  
 - Plaques  
 - Living memorials (trees, shrubs, gardens or other plantings)  
 - Fixtures or furnishings

11

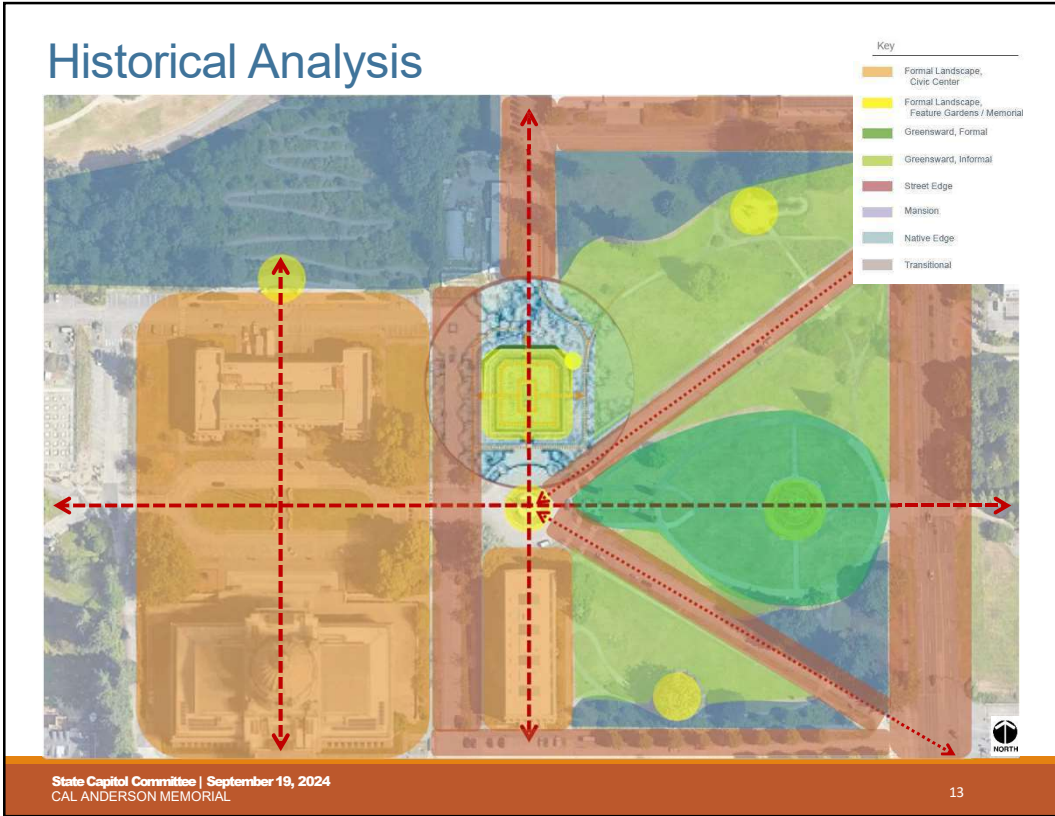
# Contextual Analysis

- Historical Analysis
- Social Analysis
- Environmental Analysis
- Design Components
- Applied Analysis

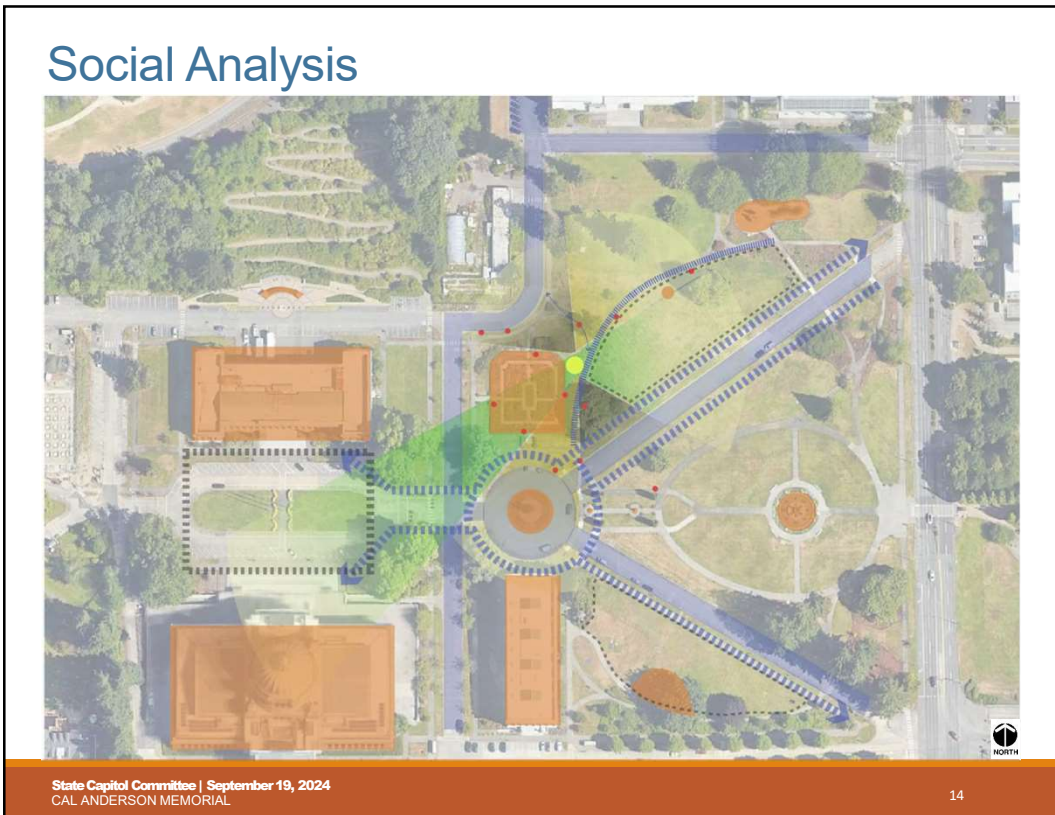


12





13



14

## Environmental Analysis



State Capitol Committee | September 19, 2024  
CAL ANDERSON MEMORIAL

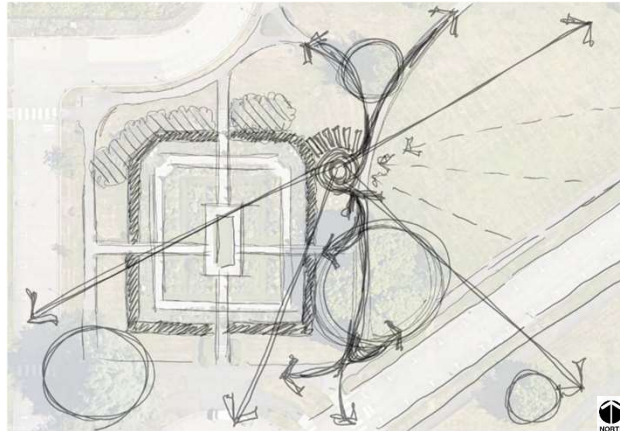
15

15

## Draft Conceptual Composite Analysis

### Initial Design Thoughts:

- Dual purpose to sit, meditate, contemplate towards views of legislative building and greensward.
- Opportunity to make announcements, proclamations, educate towards greensward.
- Complement curvilinear greensward and pastoral landscape to provide contrast to sunken garden.
- Buffer views and sounds to north and northwest.
- Consider how the memorial may invite pedestrians from south and be seen from a distance from east and northeast.
- Avoid features of significance over the height of the sunken garden.
- Be transparent, not hidden, break the ground and rhythm of the path to provide a spot to rest and facilitate engagement with the memorial and its message.



State Capitol Committee | September 19, 2024  
CAL ANDERSON MEMORIAL

16

16

## Draft Conceptual Diagrams

WIDTH

Minimum size

- 10' wide
- 15' offset from hedge

Section

- 15' wide
- 10' offset from hedge

Section

- 20' wide
- 5' offset from hedge

Maximum size

Plan

HEIGHT

- Tree(s) limbed up for sight lines

- Seating, sculpture, plantings

- Low plantings, seating

State Capitol Committee | September 19, 2024  
CAL ANDERSON MEMORIAL

17

17

## Draft Conceptual Diagrams

WIDTH

Minimum size

- 10' wide
- 15' offset from hedge

Section

- 15' wide
- 10' offset from hedge

Section

- 20' wide
- 5' offset from hedge

Maximum size

Plan

HEIGHT

- Tree(s) limbed up for sight lines

- Seating, sculpture, plantings

- Low plantings, seating

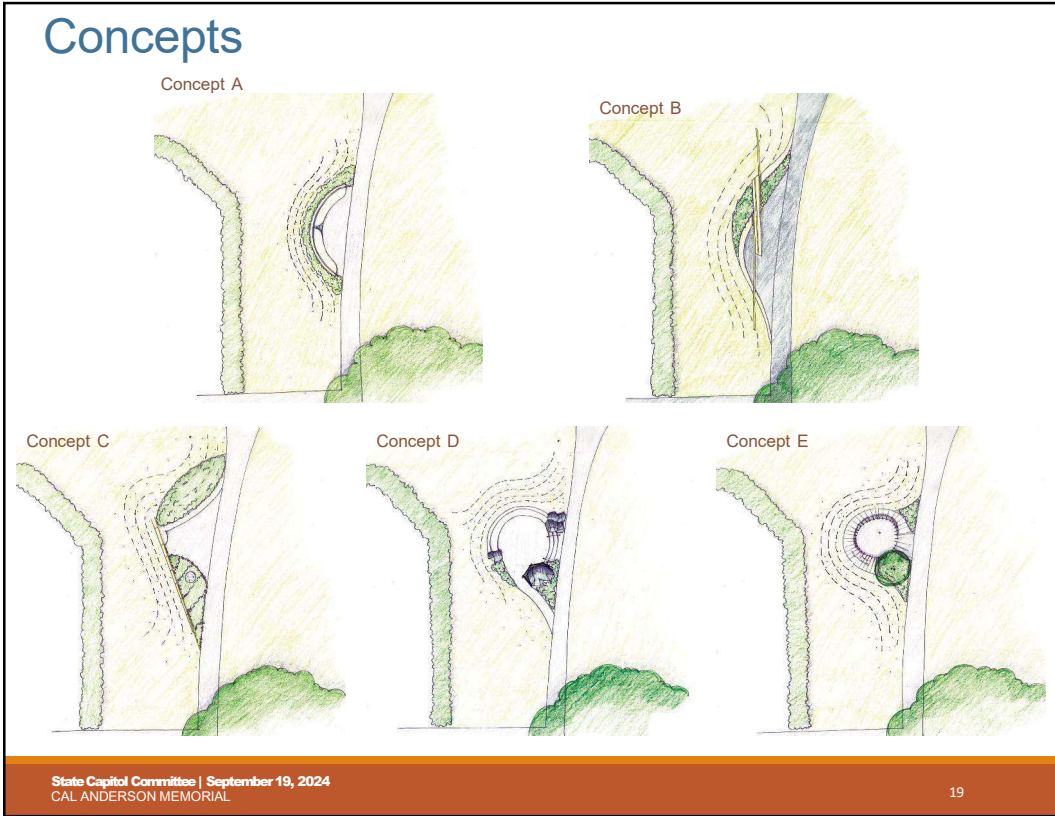
Stakeholder Meeting #2 Feedback

State Capitol Committee | September 19, 2024  
CAL ANDERSON MEMORIAL

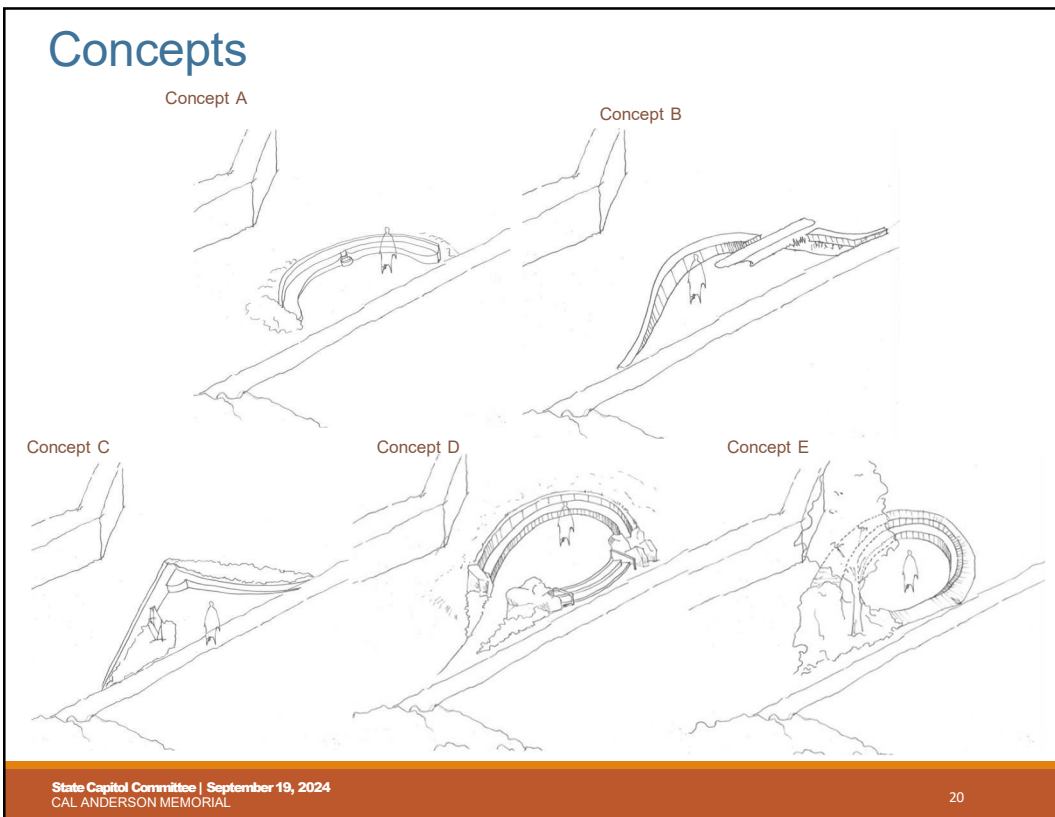
18

18





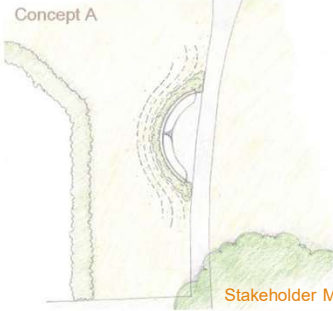
19



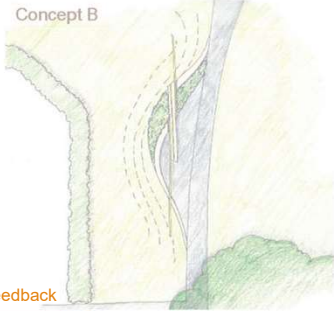
20

## Stakeholder Meeting #3 Feedback

Concept A

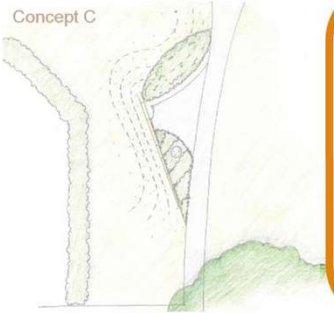


Concept B

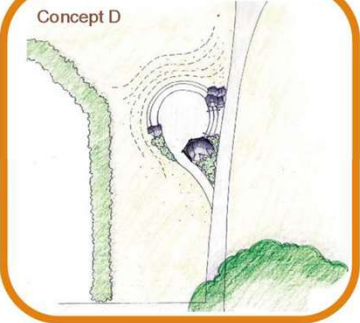


Stakeholder Meeting #3 Feedback

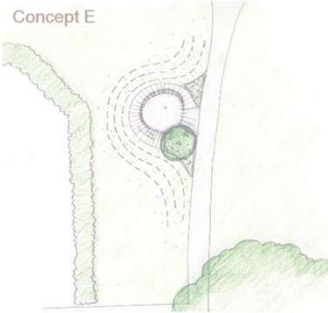
Concept C



Concept D




Concept E



State Capitol Committee | September 19, 2024  
CAL ANDERSON MEMORIAL
21

21

## Recent Feedback



**Stakeholder #3 Feedback**

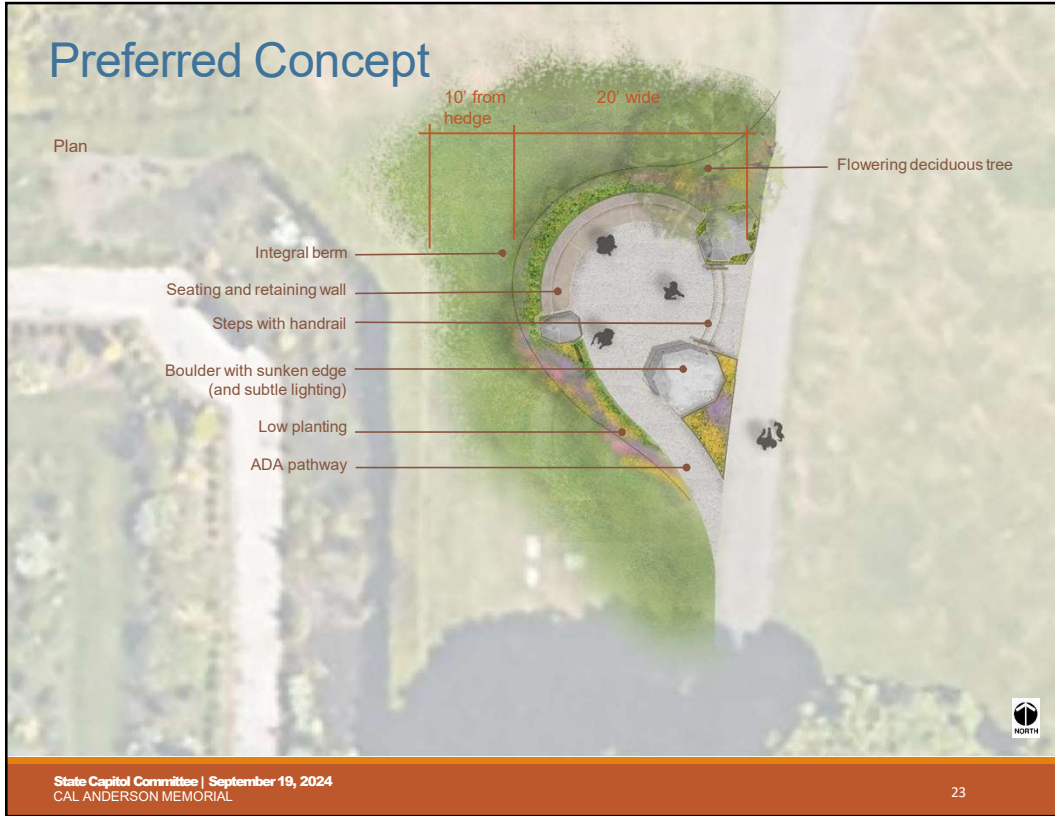
- Concept D is preferred.
- Consider adding a flowering deciduous tree in the NE corner.
- Stakeholders saw this concept as cleaner, collaborative and contemplative in nature.
- With the space set off from the path more than other concepts, it seems easier for visitors to talk to each other.
- Drainage would be required at the center of open space.
- Structural cell tree systems or root barriers would provide space and deterrents below grade for the roots to minimize damaging to the paving above.
- The design is visually appealing while still providing views in each direction.
- Need to consider opportunities for interpretive sign locations.
- Provide additional detail on grade changes.

**CCDAC Feedback**

- Senator Hunt requested we add "leader" to the words that describe Cal Anderson, as he was a mentor.

State Capitol Committee | September 19, 2024  
CAL ANDERSON MEMORIAL
22

22

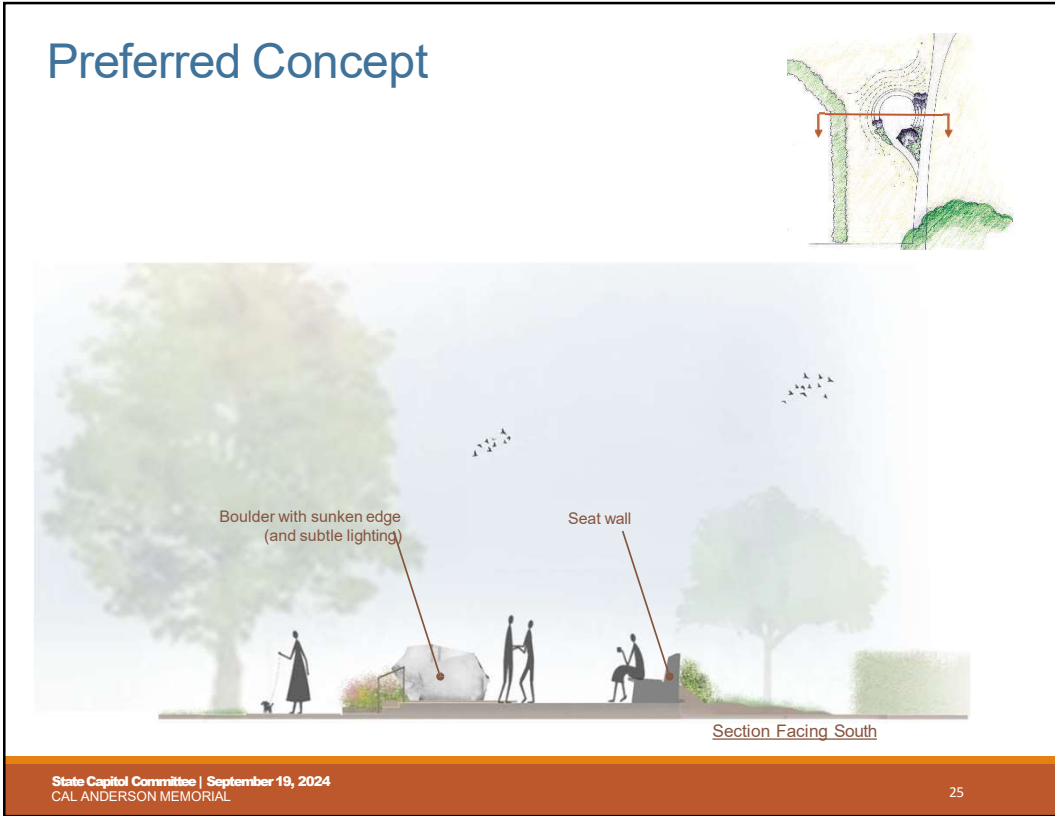


23

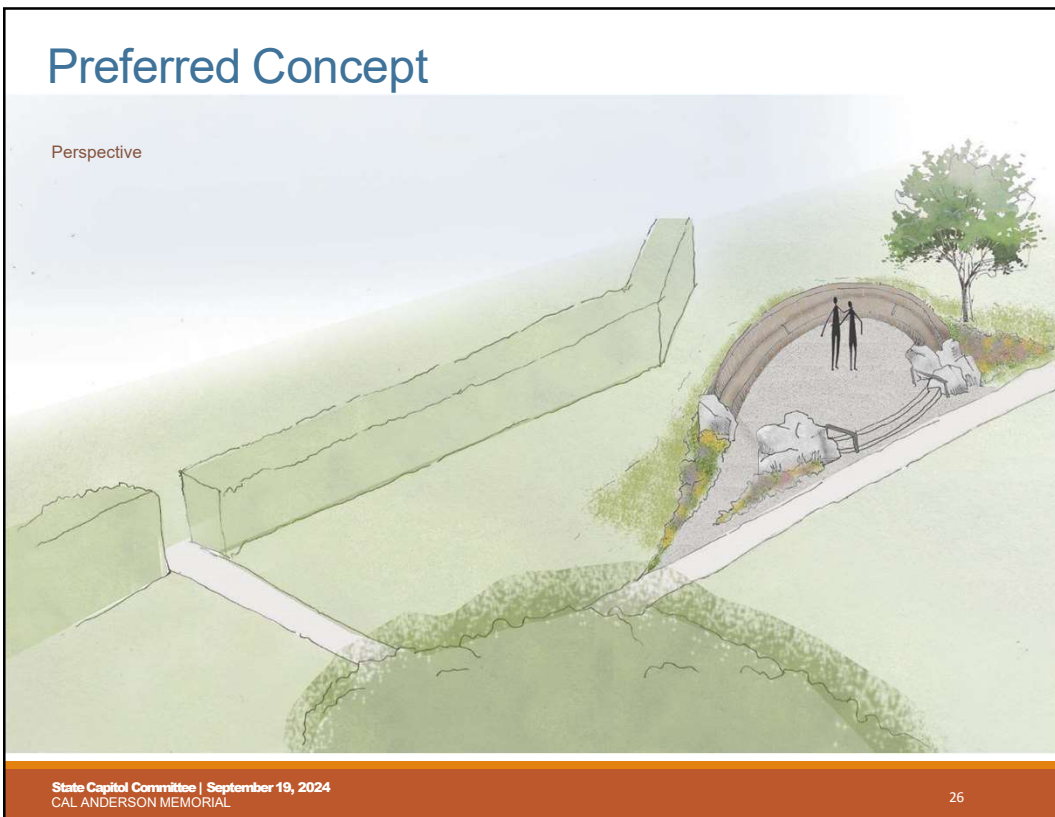


24





25



26

Thank you

Comments or Questions?



State Capitol Committee | September 19, 2024  
CAL ANDERSON MEMORIAL

27



## **State Capitol Campus Committee**

September 19, 2024

### **Fallen Firefighter Memorial**

Purpose: **Informational**

Sponsor(s): Washington State Department of Natural Resources  
Presenters: Brian Considine, Legislative Director, Dept. of Natural Resources,  
[Brian.Considine@dnr.wa.gov](mailto:Brian.Considine@dnr.wa.gov), 360-764-0013

#### **Description:**

The Legislature unanimously passed SHB [2091](#) in the 2024 session establishing a Fallen Firefighter Memorial on Capitol Campus. The Legislator also appropriated funds to the Department of Natural Resources (DNR) to begin the pre-design process during fiscal year 2025 because DNR filed HB 2091 as agency request legislation.

This new memorial will recognize the sacrifice of firefighters who have died in the line of duty. It will feature a memorial that will fit the size of scale to start with the names of 300 fire fighters who have died in the line of duty and be able to add names to the memorial over time. It also will need to be able to host an annual event that is put on each year to honor firefighters who have lost their lives in the line of duty.

Following the legislation, the effort to create the memorial moves through the major works process as outlined by [WAC 200-230](#) to include siting the memorial, identifying installation and maintenance costs, and the need for a recommendation of the proposal from the Capitol Campus Design Advisory Committee (CCDAC) and final approval from the State Capitol Committee (SCC).

The proposal to install a new memorial dedicated to the Fallen Firefighters has been submitted to the DES Director with supplemental documentation including proposed siting. DNR and their fire service partners would like to secure the location of this memorial before they move forward with the pre-design process.

#### **Next Steps:**

- SCC will hear this item as informational at its 3<sup>rd</sup> quarter meeting.
- CCDAC will hear this item as informational at its 4<sup>th</sup> quarter meeting.
- SCC will hear this item as decisional at its 4th quarter meeting.

#### **Requested Action:**

##### **INFORMATIONAL ITEM**

This is an informational item. No action by SCC is necessary.

#### **List of Attachments:**

Attachment: SCC PowerPoint

# State Capitol Committee

September 19, 2024  
Brian Considine, DNR



**WASHINGTON STATE DEPARTMENT OF  
NATURAL RESOURCES**  
Hillary Franz, Commissioner of Public Lands

dnr.wa.gov

1

# Fallen Firefighter Memorial

## SHB 2091

5-0624.2 \_\_\_\_\_  
HOUSE BILL 2091

State of Washington 68th Legislature 2024 Regular Session


By Representatives Bronoske, Griffey, Leavitt, Flaggibon, Chapman, Reed, Ormsby, Ramez, Callan, Rule, Timmons, Bergquist, Goodman, Rude, Fosse, Hance, Ryu, Schmidt, Stearns, Waters, Paul, Reeves, and Kioba;  
By request of Department of Natural Resources

Prefiled 01/03/24. Read first time 01/09/24. Referred to Committee on State Government & Tribal Relations.


1 AN ACT Relating to establishing a fallen firefighter memorial;  
2 adding new sections to chapter 43.34 RCW; and creating a new section.  
3 BE IT ENACTED BY THE LEGISLATURE OF THE STATE OF WASHINGTON:

4 **NEW SECTION. Sec. 1.** The legislature intends to establish a  
5 fallen firefighter memorial on the capitol campus grounds to  
6 recognize the sacrifice of firefighters who have died in the line of  
7 duty giving unselfish service to their communities and the state.



8 **NEW SECTION. Sec. 2.** A new section is added to chapter 43.34  
9 RCW to read as follows:  
10 (1) A memorial is established on the capitol campus to honor  
11 firefighters who have died in the line of duty. The design and  
12 construction of such a memorial must follow the major works  
13 requirements administered by the department of enterprise services.




**Washington State  
Council of Fire Fighters**




**FALLEN FIREFIGHTER  
FOUNDATION**





**WASHINGTON STATE  
FIRE FIGHTERS'  
ASSOCIATION**



**WASHINGTON  
FIRE CHIEFS**





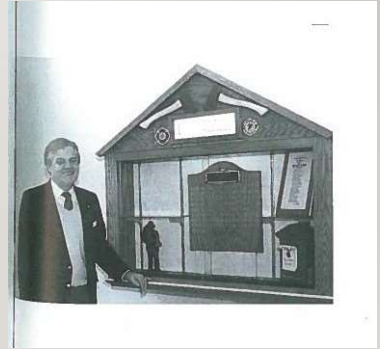
**WASHINGTON STATE DEPARTMENT OF  
NATURAL RESOURCES**

dnr.wa.gov

2

## HB 2091 Summary

- Pre-filed by DNR for 2024 Session (SB 5946 companion)
- Passed unanimously by House and Senate – signed by Governor on March 13, 2024
- \$371,000 appropriated in Capital Budget to DNR for Memorial pre-design and pre-construction work



WASHINGTON STATE DEPARTMENT OF  
**NATURAL RESOURCES**

[dnr.wa.gov](http://dnr.wa.gov)

3

## Location for the Memorial

- Major Works Process – WAC 200-230
- Goals
  - Space that is sufficient to build a large memorial
  - Space that allows for annual ceremony
  - Space that works for DES staff – meets the Capitol Campus master plan goals
  - Space that reflects importance for Fire Service partners and families of fallen fire fighters



WASHINGTON STATE DEPARTMENT OF  
**NATURAL RESOURCES**

[dnr.wa.gov](http://dnr.wa.gov)

4



# Proposed Location

**PROPOSED MEMORIAL LOCATIONS**

**MEMORIAL KEY**

- FALLEN FIRE FIGHTER
- SENATOR CAL ANDERSON

**FALLEN FIRE FIGHTER MEMORIAL**

The location to the northeast on the great lawn across from the Will Memorial offers several benefits. First, it offers clear sight lines to the Legislative Building. Second, the open space on the great lawn and its proximity to the north diagonal enables fire trucks and large gatherings to assemble.

**SENATOR CAL ANDERSON MEMORIAL**

The location east of the Sunken Garden offers a naturally intimate setting. The surrounding hedge and the adjacent pedestrian walkway define the space, offer accessibility, and support the opportunity for quiet reflection.

**PROPOSED MEMORIAL LOCATIONS**

**MEMORIAL KEY**

- FALLEN FIRE FIGHTER
- SENATOR CAL ANDERSON

**FALLEN FIRE FIGHTER MEMORIAL**

The location to the northeast on the great lawn across from the Will Memorial offers several benefits. First, it offers clear sight lines to the Legislative Building. Second, the open space on the great lawn and its proximity to the north diagonal enables fire trucks and large gatherings to assemble.

**SENATOR CAL ANDERSON MEMORIAL**

The location east of the Sunken Garden offers a naturally intimate setting. The surrounding hedge and the adjacent pedestrian walkway define the space, offer accessibility, and support the opportunity for quiet reflection.

WASHINGTON STATE DEPARTMENT OF NATURAL RESOURCES dnr.wa.gov

5

# Proposed Location





WASHINGTON STATE DEPARTMENT OF NATURAL RESOURCES dnr.wa.gov

6

## Proposed Location

- Sufficient size for the memorial
- Allows for an annual memorial event (recent one held on Aug. 11, 2024)
- Easy year-round access
- Creates a connection point for visitors as they walk this part of Capitol Campus



WASHINGTON STATE DEPARTMENT OF  
**NATURAL RESOURCES**

dnr.wa.gov

7

## Next Steps

- Location for the Memorial Approved

Then

- DNR has a \$371,000 appropriation in the supplemental capital budget for the design and initial implementation of the memorial
- DNR will continue to work with DES Staff and our Fire Service Partners on an RFP for the pre-design work
- Once we have a proposed design, we will work with the Legislature to ensure there is sufficient funding to build the memorial and the CCDAC and SCC for approval through the major works process



WASHINGTON STATE DEPARTMENT OF  
**NATURAL RESOURCES**

dnr.wa.gov

8

Thank You!







Washington State  
**DEPARTMENT OF  
ENTERPRISE SERVICES**

## **State Capitol Campus Committee**

*Lieutenant Governor Denny Heck, Secretary of State Steve Hobbs,  
Governor Inslee's Designee Kelly Wicker, and Commissioner of Public Lands Hilary Franz's designee Katy Taylor*

**SEPTEMBER 19, 2024**

(REMOTE ACCESS MEETING)

### **9- Future Announcements and Adjournment of Meeting**

The Next Regularly Scheduled Meeting Calendar and up-to-date information may be found on the State Capitol Committee (SCC) and Capitol Campus Design Advisory Committee (CCDAC) websites.

These meetings may be held via remote access or “in-person.”

Future agendas, past minutes and meeting materials will be posted to these websites as they become available.

**THANK YOU FOR PARTICIPATING IN TODAY'S MEETING!**