

An aerial photograph of the Washington State Capitol building, featuring a prominent central dome and several large, classical-style wings. The building is surrounded by green lawns and other campus structures. The image is slightly faded to serve as a background for the text.

BEFORE WE START,
PLEASE SIGN IN

-
- **If you would like to update your email with us, please email DESLCM@des.wa.gov**
 - **Please save all questions for the end**
 - **We plan 20 minutes for Q&A**
 - Thank you!

LEGISLATIVE CAMPUS MODERNIZATION

STAKEHOLDER MEETING #14

October 27, 2022

AGENDA

- *LCM 90 Day Look Ahead*
- *LCM Non-Project SEPA, Legislative Modular SEPA, and Newhouse Building Replacement SEPA status - Informational*
- *Legislative Modular Building - Informational*
- *Pritchard and O'Brien Project - Informational*
- *Newhouse Building Replacement - Informational*

90-DAY LOOK AHEAD

November 2022

- LCM Landscape Peer Review Panel Meeting November 15, 2022
- CCDAC meeting November 17, 2022

Early 2023

- Stakeholder Meeting #16 January 26, 2023
- PET Meeting February 9, 2023
- Newhouse Construction Documents (CD) completion is planned for mid-February 2023.



December 2022

- LCM Stakeholder Meeting #15 December 8, 2022 – We are combining November and December stakeholder meetings because of the holidays. The normal schedule will resume in 2023.
- PET Meeting December 8, 2022
- SCC meeting December 15, 2022
- Pritchard and O'Brien Schematic Design begins in early December 2022

LCM RECENT PROGRESS

LCM Landscape Peer Review Panel:

- Open forum occurred on October 13.
- Newhouse landscape Architect Murase is reviewing soil cell options.
- Pritchard and O'Brien open forum will be scheduled in the new year.

SEPA Updates:

- The Modular SEPA Checklist is complete and has been posted.
- The Newhouse and Non-project SEPA Checklist's comments are currently under review.

OLMSTED LEGACY AWARD

- The Professional Grounds Management Society (PGMS) honored DES Buildings & Grounds via their Green Star Awards® program in the Olmsted Properties category, which brings national recognition to grounds maintained with a high degree of excellence.
- The DES grounds plan stays true to the concepts in the original landscape design by the Olmsted Brothers, which was completed in 1930.



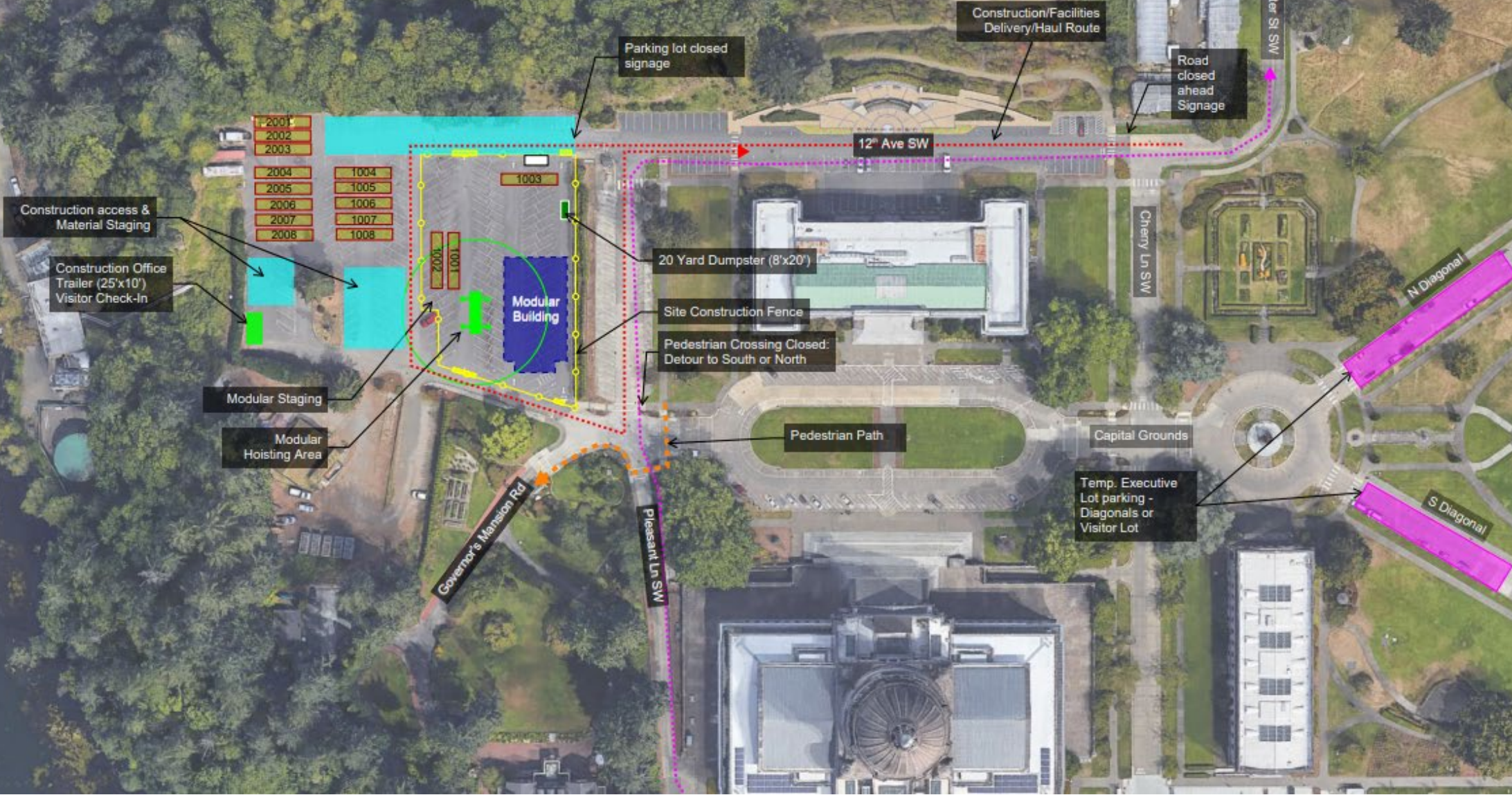
LEGISLATIVE MODULAR BUILDING

LEGISLATIVE MODULAR BUILDING

- **Scope:** Two-story building with 16 modules (14,643 SF). Includes south elevator, stairs, and lobby.
- **Schedule:** Entry tower elevator & stair have framing & exterior completed now; Remote construction of 16 modules continues with anticipated site delivery in early November; Modular Building installation, electrical & HVAC fit-out occurring in November. Elevator delivery & installation are to begin in mid-November. Furniture move-in is scheduled the first week of December with occupancy scheduled for mid-December.
- **Budget:** Legislators approved a budget of \$9.5M in total project costs on March 8, 2022.

Modular Logistics: Module Pick Layout Plan

Nov 1 - Nov 18



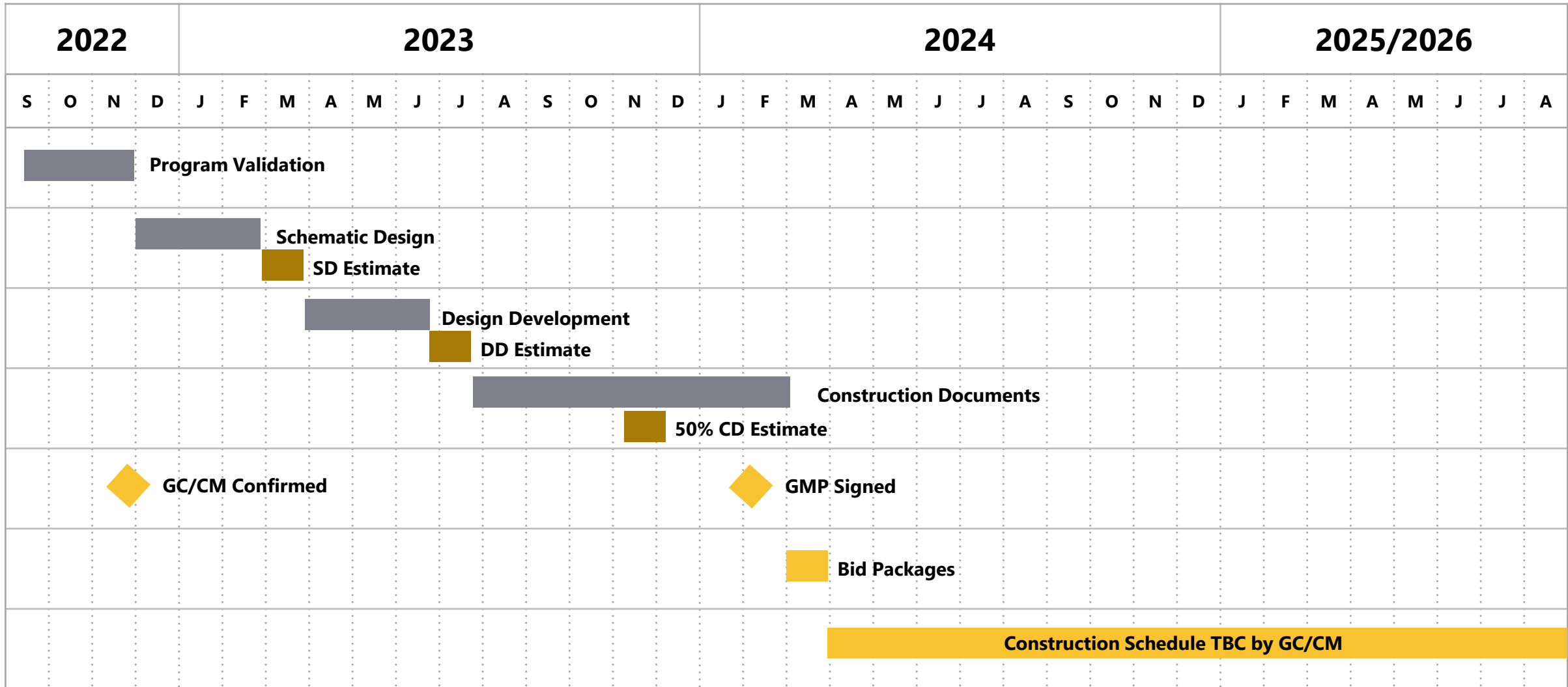
MODULAR PROGRESS PHOTOS



PRITCHARD AND O'BRIEN PROJECT



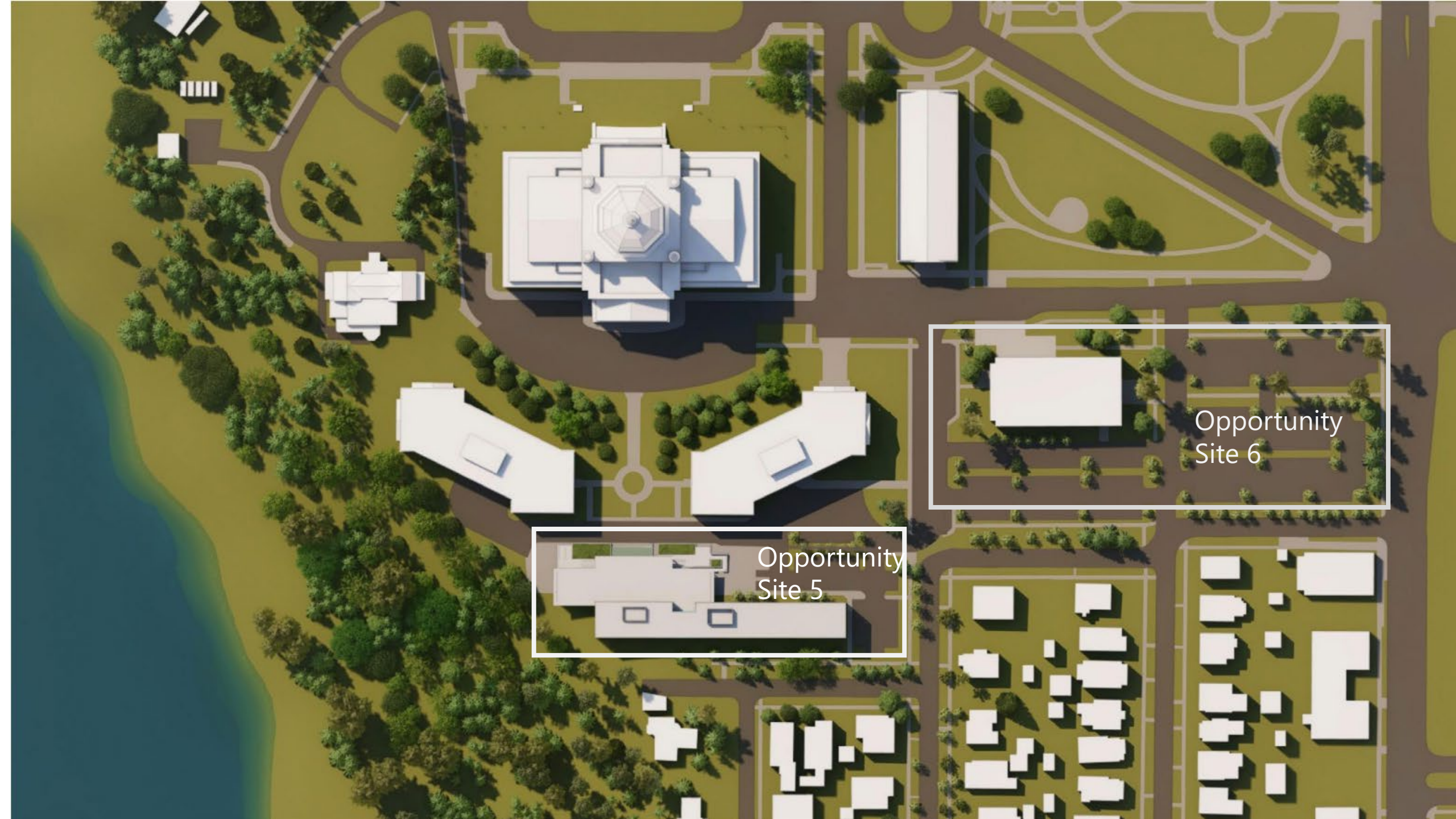
Pritchard and O'Brien Project Schedule



NEWHOUSE BUILDING REPLACEMENT

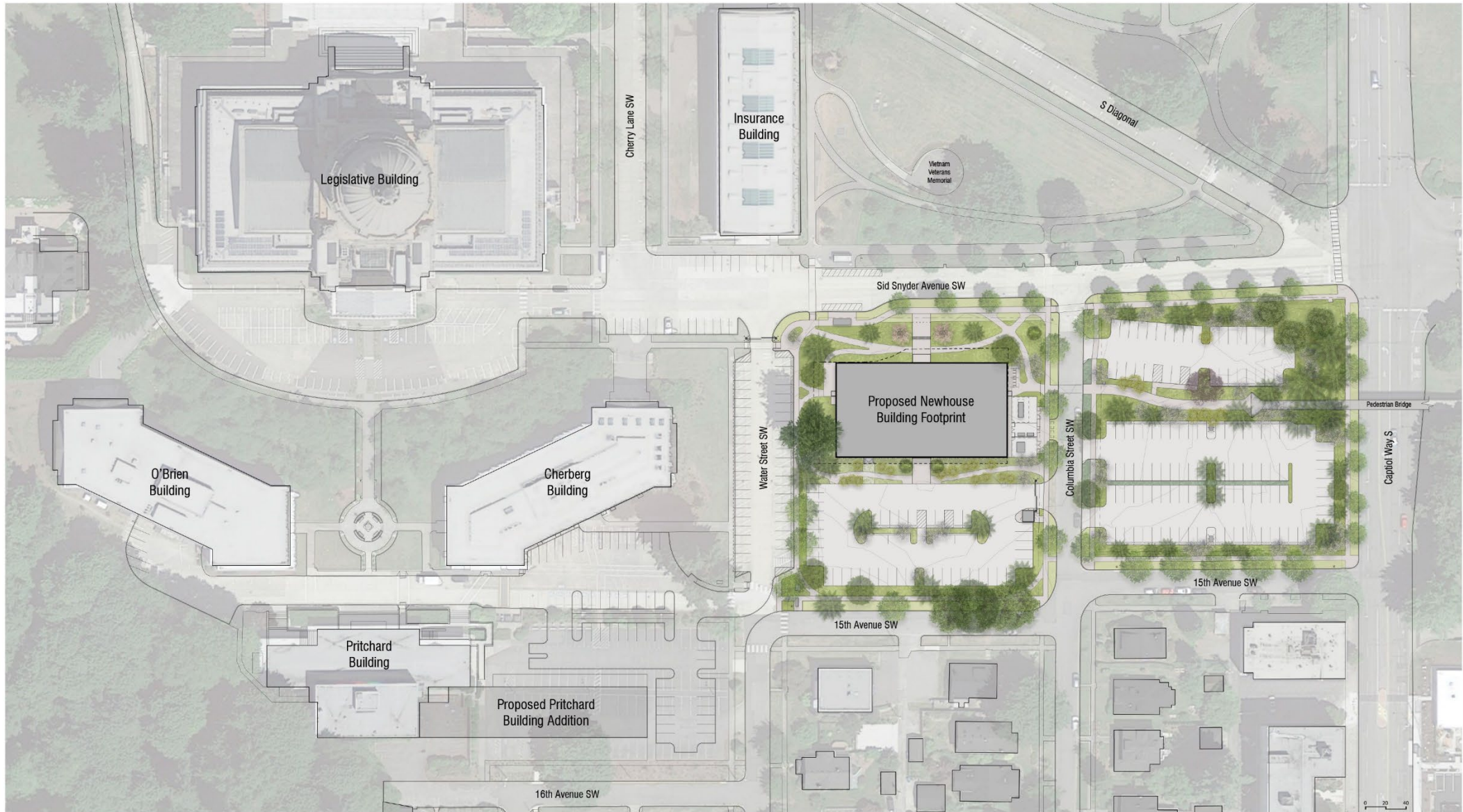
NEWHOUSE BUILDING REPLACEMENT

- **Scope:** Newhouse floor plans are confirmed for total of 59,010 square feet. Current plan includes 3,450 square feet for Shared Service spaces.
- **Art Review:** Final selection will be held the week of November 1, 2022. Three artists will be interviewed and will complete research and provide a conceptual design:
 - ***Jill Anholt; RYAN! Fedderson; Jacqueline Metz and Nancy Chew.***
- **Schedule:** Construction Document (CD) started the week of October 10, 2022. Permit submittal with the City of Olympia is planned for the week of December 16, 2022. CD completion is planned for mid-February 2023.



Opportunity
Site 5

Opportunity
Site 6



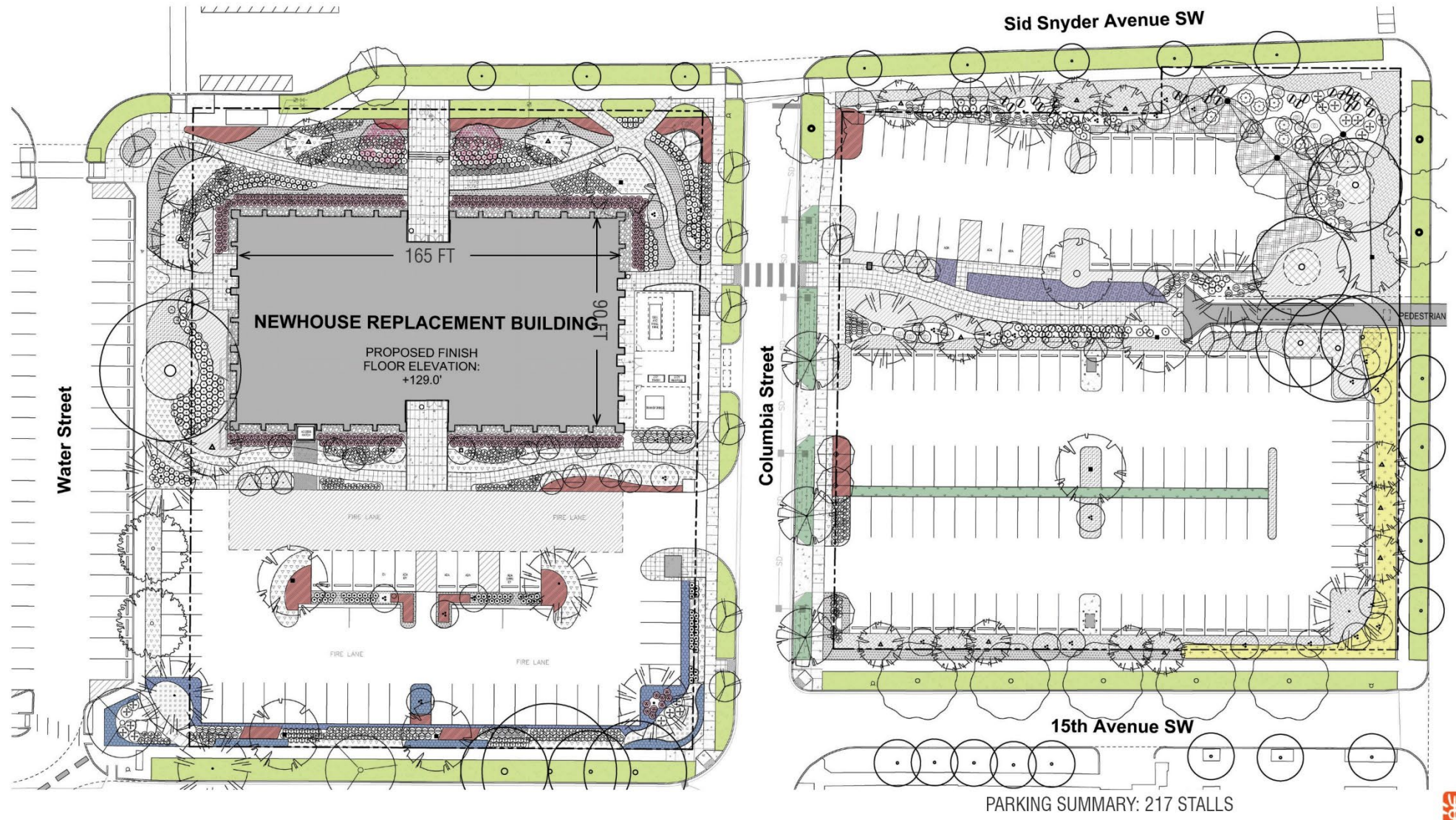
CAPITOL CAMPUS - NEWHOUSE SITE PLAN



PARKING SUMMARY: 217 STALLS

LANDSCAPE PLAN





LANDSCAPE PLAN





WEST CAPITOL CAMPUS BIRDSEYE VIEW - BEFORE

NEWHOUSE BUILDING REPLACEMENT & LCM GLOBAL SUBPROJECT | The Miller Hull Partnership | October 27, 2022

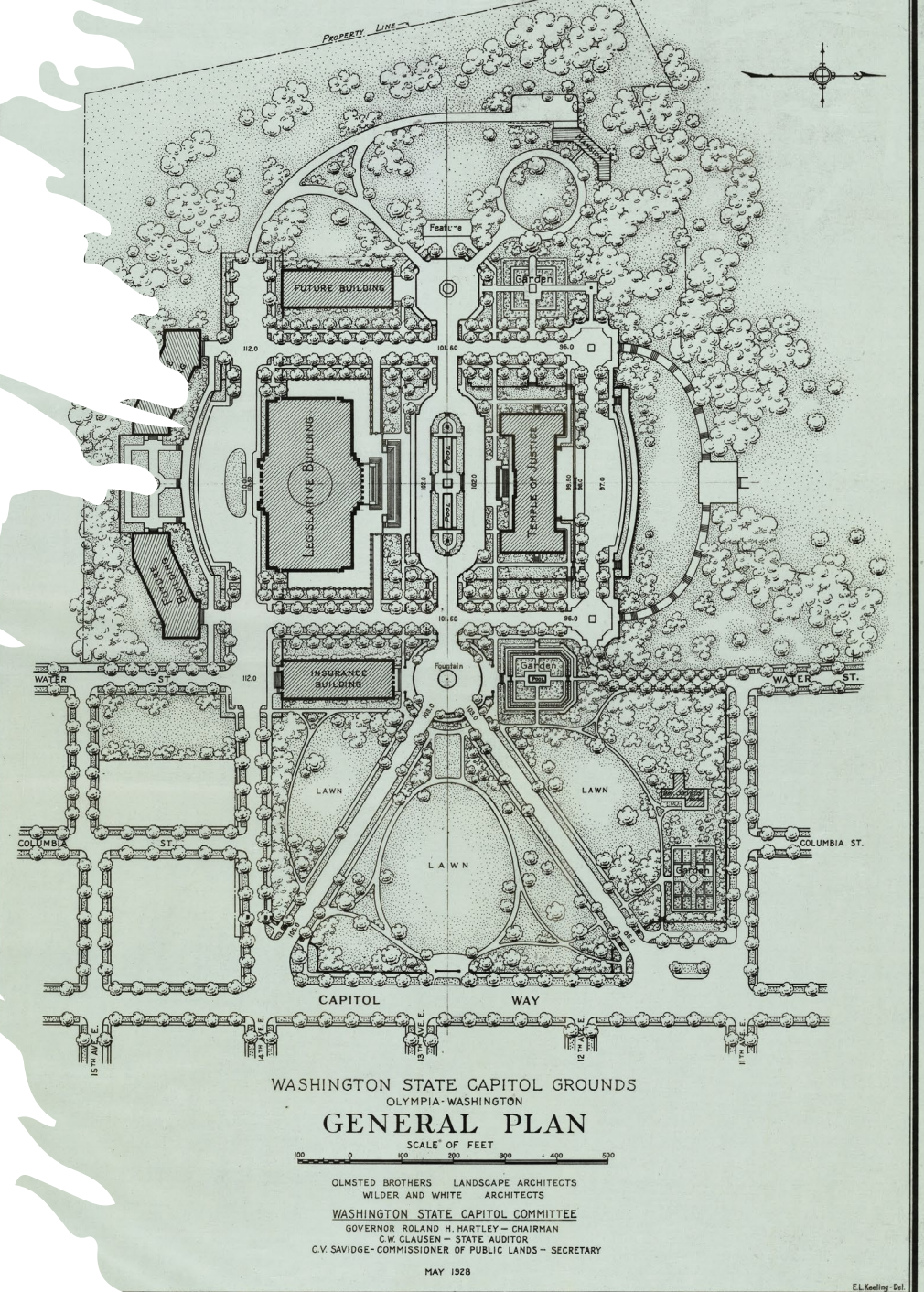


WEST CAPITOL CAMPUS BIRDSEYE VIEW - AFTER

NEWHOUSE BUILDING REPLACEMENT & LCM GLOBAL SUBPROJECT | The Miller Hull Partnership | October 27, 2022

Q&A

- Please limit comments to 3 minutes per question/comment
- If there are follow-up questions, please email them to DESLCM@des.wa.gov
- All updates regarding stakeholder meeting dates and other LCM updates are posted at [Legislative Campus Modernization \(LCM\) | Department of Enterprise Services \(wa.gov\)](#) and Public Meeting updates here [LCM Public Meetings | Department of Enterprise Services \(wa.gov\)](#)
- Please note our LCM Stakeholder Meeting #15 will be held on December 8, 2022
 - We are combining November and December stakeholder meetings because of the holidays. The normal schedule will resume in 2023.



THANK YOU



clarissa.easton@des.wa.gov



360-701-0088



www.des.wa.gov